

# PARKING SPACE SUMMARY

BAY AREA AND MEETING ROOMS  
 CATEGORY D = 1 SPACE / 200 SQ. FT. .... 9,997 SQ. FT. = 50 SPACES  
 REMAINING APPLICABLE AREAS  
 CATEGORY B = 1 SPACE / 300 SQ. FT. .... 8,215 SQ. FT. = 28 SPACES  
 TWO PARKING SPACES PER BAY ..... 5 BAYS = 10 SPACES

TOTAL PARKING SPACES REQUIRED = 88 SPACES  
 TOTAL PARKING SPACES PROVIDED = 98 SPACES

# IMPERVIOUS AREA SUMMARY

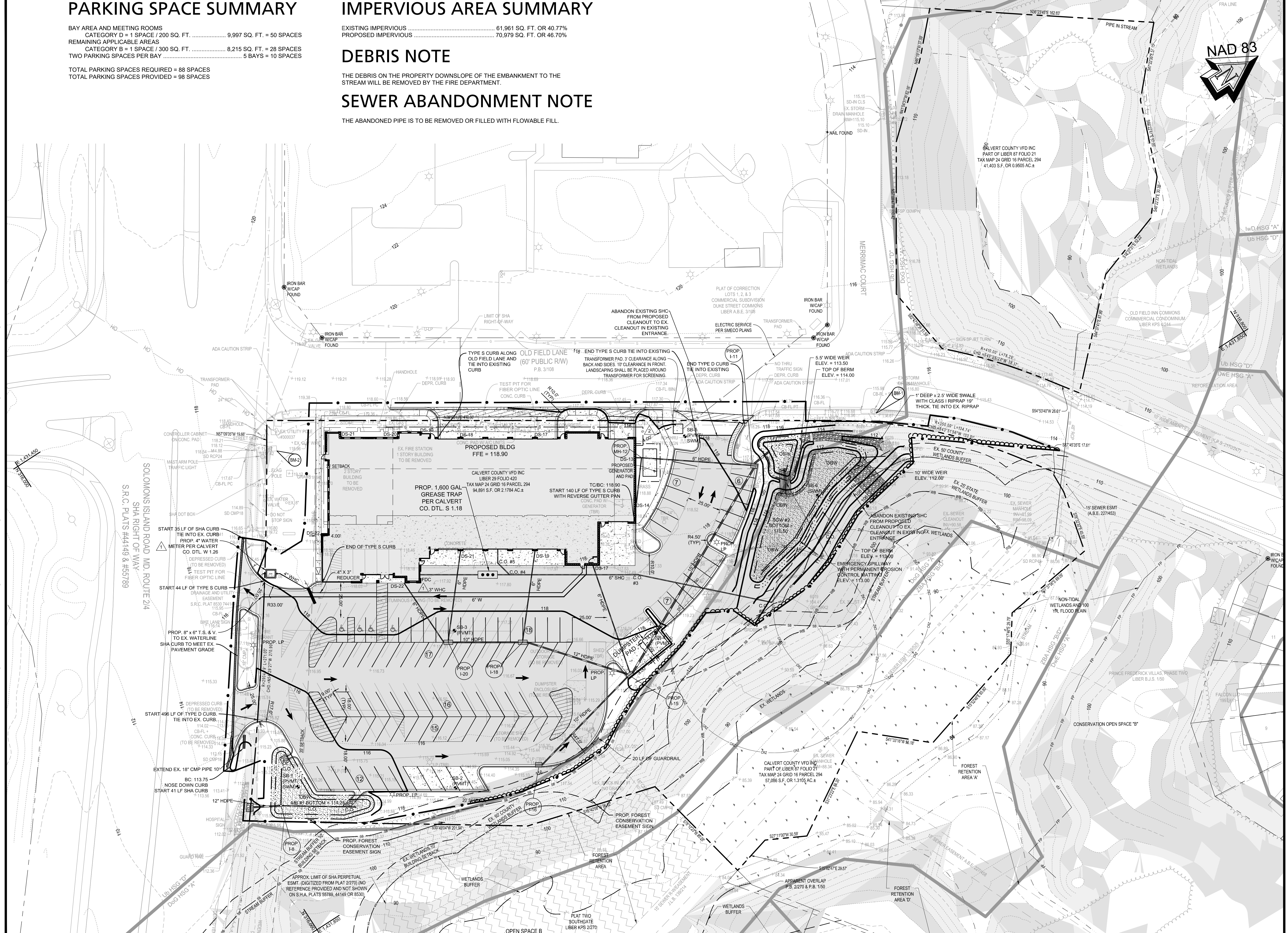
EXISTING IMPERVIOUS ..... 61,961 SQ. FT. OR 40.77%  
 PROPOSED IMPERVIOUS ..... 70,979 SQ. FT. OR 46.70%

# DEBRIS NOTE

THE DEBRIS ON THE PROPERTY DOWNSLOPE OF THE EMBANKMENT TO THE STREAM WILL BE REMOVED BY THE FIRE DEPARTMENT.

# SEWER ABANDONMENT NOTE

THE ABANDONED PIPE IS TO BE REMOVED OR FILLED WITH FLOWABLE FILL.



PLOTTED: Nov 20, 2019, 10:33am  
 INCLUDED XREFS & IMAGES: 17-5965 C-SITE CONSTRUCTION REVISIONS.dwg 17-5965 C-EXISTING.dwg 17-5965 FORM.dwg 17-5965 C-TOPO.dwg

Rev. #	Date	By	Description

**Bay Engineering Inc.**  
 Engineers, Planners and Surveyors  
 2961 Riva Road, Building 800  
 Annapolis, Maryland 21401  
 410.897.9990 fax  
 email: info@bayengineering.com  
 www.bayengineering.com

Date: DECEMBER, 2018  
 Job Number: 17-5965  
 Scale: 1" = 30'  
 Drawn By: AI  
 Approved By: NA  
 Folder Reference: BWH PRINCE FREDERICK VFD

**PROPOSED SITE PLAN**  
 FOR  
**PRINCE FREDERICK VOLUNTEER**  
**FIRE DEPARTMENT CO. #2**  
 450 S SOLOMONS ISLAND ROAD  
 PRINCE FREDERICK, MARYLAND 20678  
 TAX MAP 24, GRID 16, PARCEL 294  
 SECOND DISTRICT - CALVERT COUNTY

Sheet No. 3 OF 18  
 F:\17-5965 BWH - Prince Frederick VFD\Drawing Files\Site Plans\17-5965 03 PROP.dwg