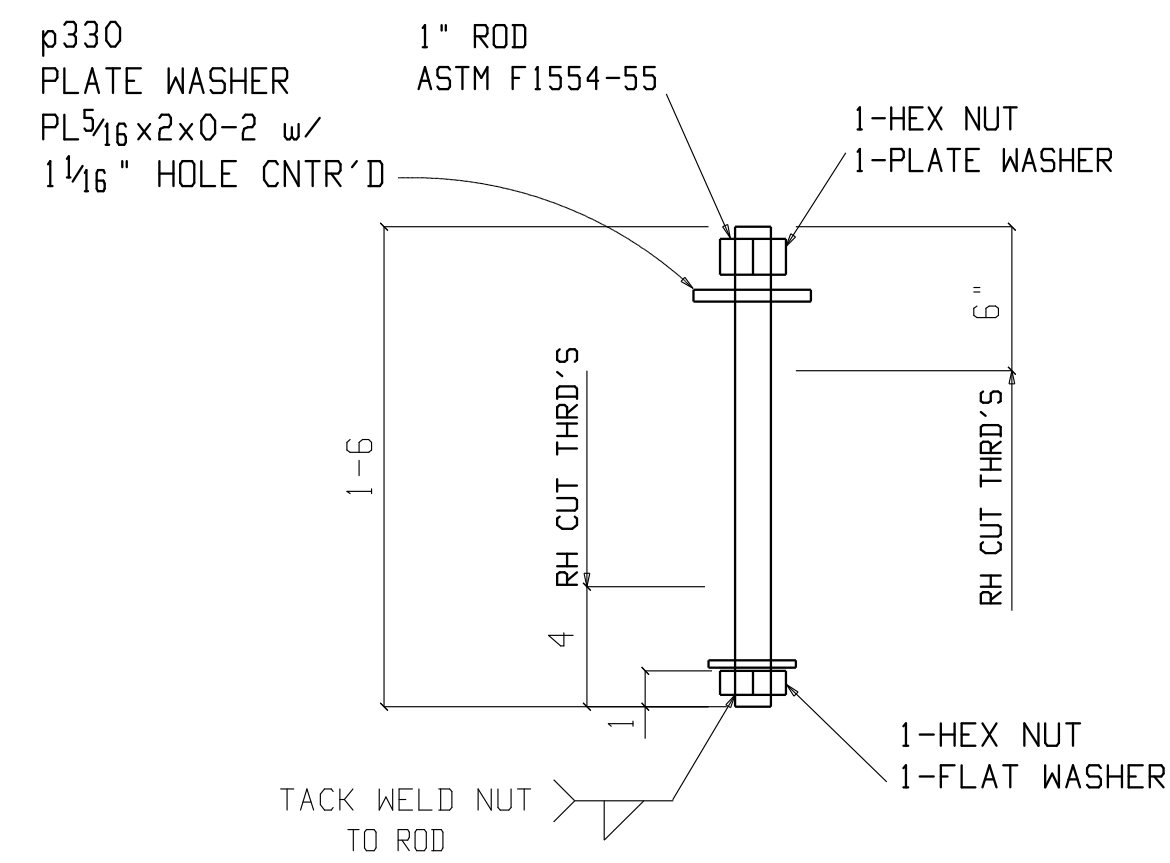
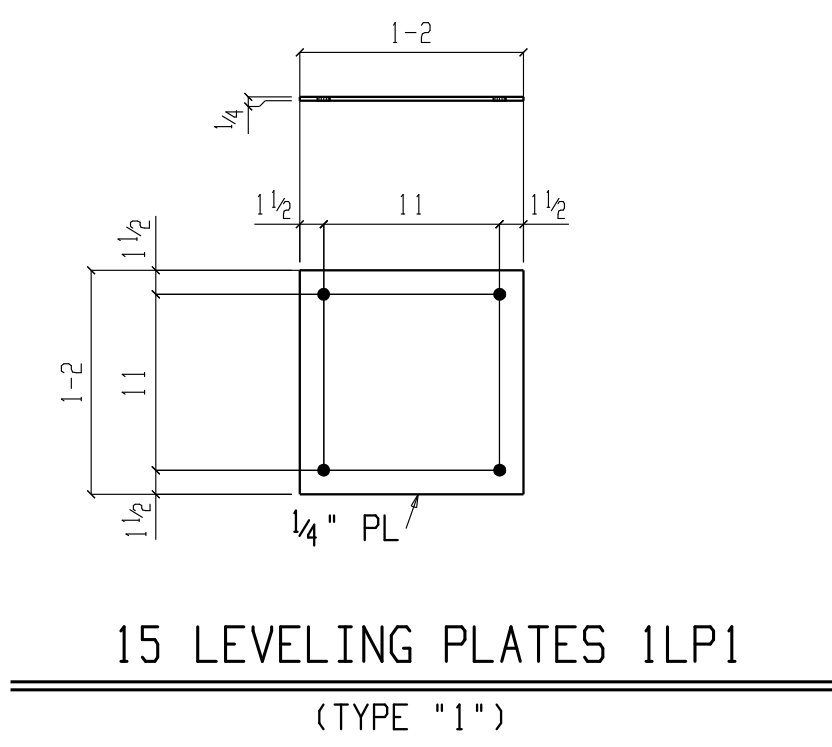


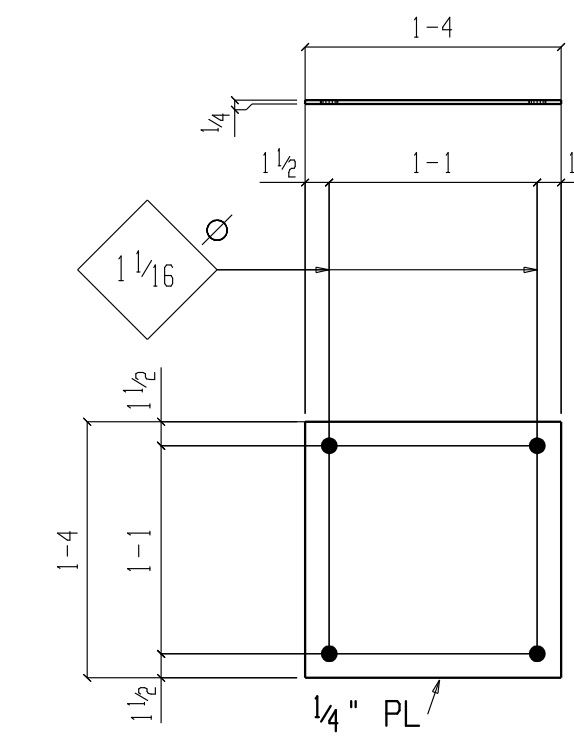
74 ANCHOR BOLTS 1AB1
(TYPES "1", "3", "4")



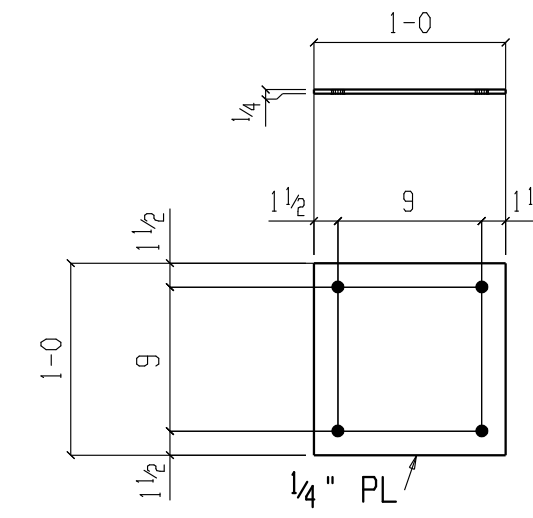
24 ANCHOR BOLTS 1AB2
(TYPE "2")



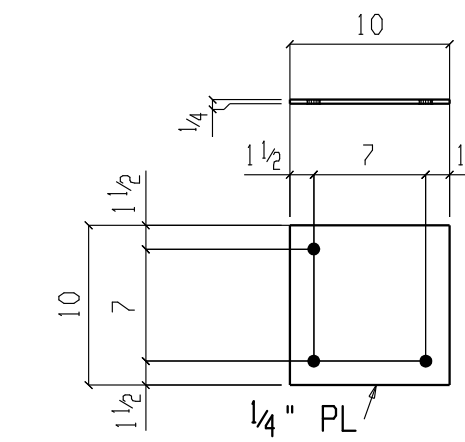
15 LEVELING PLATES 1LP1
(TYPE "1")



6 LEVELING PLATES 1LP2
(TYPE "2")



2 LEVELING PLATES 1LP3
(TYPE "3")



2 LEVELING PLATES 1LP4
(TYPE "4")

BILL OF MATERIAL						
Piece Mark	Quan	Unit	Quan	DESCRIPTION	Length	Height
			Total			Total
1AB1	1		74	ANCHOR BOLT		284
1AB1	1		74	AB 1	1 6	F1554 GRADE 55 256
	2		148	MB 1 NC NUT		A563
	1		74	MB 1 FLAT WASHER		F436
p332	1		74	PL 5/16 x 1 5/8	0 1 5/8	A36 17
1AB2	1		24	ANCHOR BOLT		95
1AB2	1		24	AB 1	1 6	F1554 GRADE 55 86
	2		48	MB 1 NC NUT		A563
	1		24	MB 1 FLAT WASHER		F436
p330	1		24	PL 5/16 x 2	0 2	A36 9
1LP1	1		15	LEVELING PLATE		208
1LP1	1		15	PL 1/4 x 14	1 2	A36 208
1LP2	1		6	LEVELING PLATE		109
1LP2	1		6	PL 1/4 x 16	1 4	A36 109
1LP3	1		2	LEVELING PLATE		20
1LP3	1		2	PL 1/4 x 12	1 0	A36 20
1LP4	1		2	LEVELING PLATE		14
1LP4	1		2	PL 1/4 x 10	0 10	A36 14

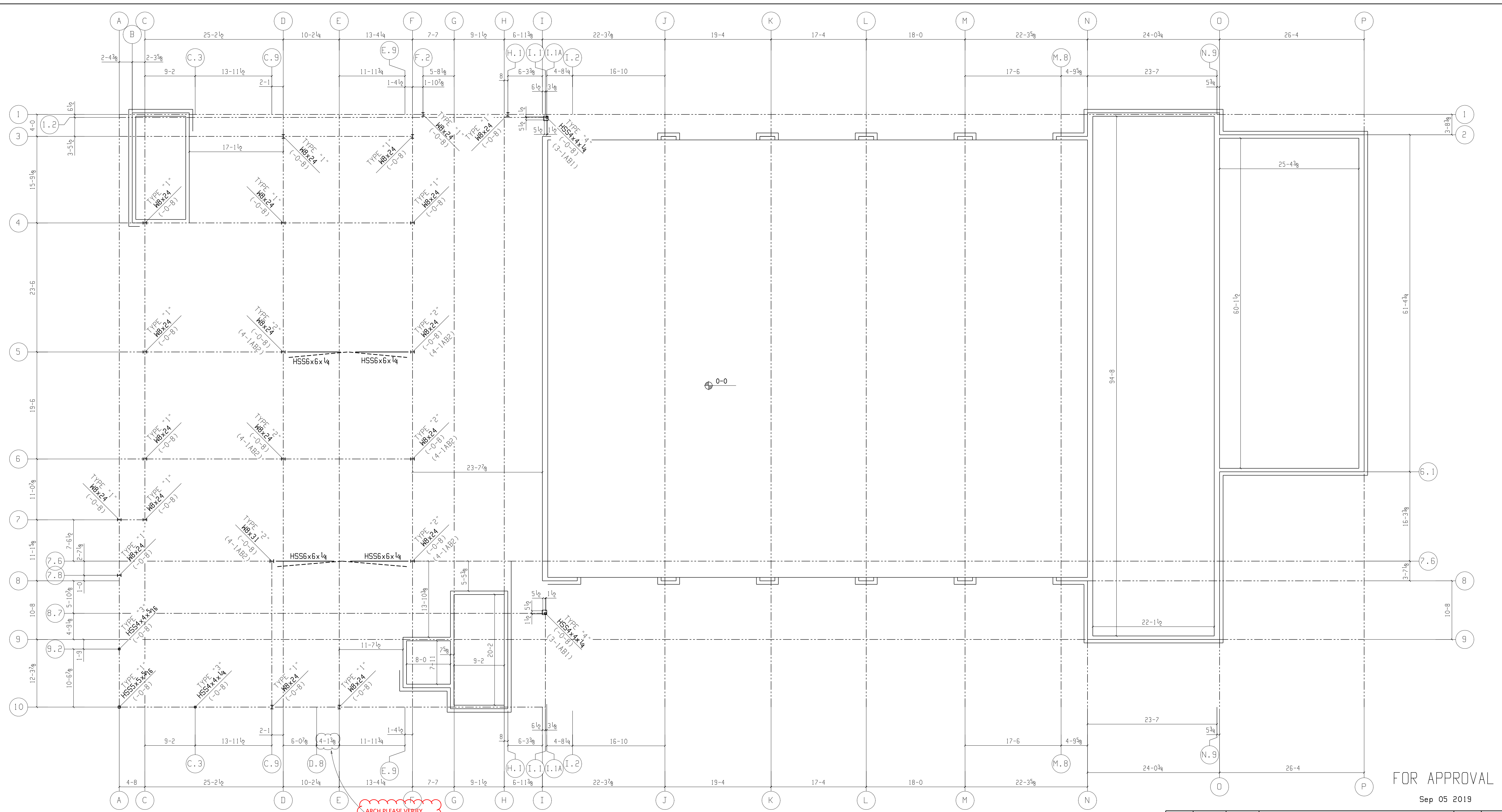


FOR APPROVAL

Sep 05 2019

△					
△					
△					
△					
△					
REVISION	DATE	BY	CHK'D BY	DATE	

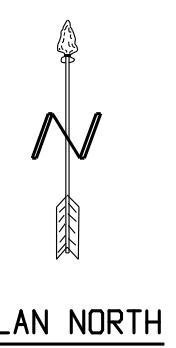
SPECIFICATIONS "M" ASTM A992 PIPE ASTM A53 GRB TUBE ASTM A500-B ELECTRODE E 70xxLH		FIELD BOLTING REQUIREMENT U.N.O. BOLT TYPE: A325 WASHER TYPE: F436 INSTALLATION: SNUG TIGHT		REF. DESIGN DRG. NO. S1.01		REF. ERECTION DRG. NO. AB1		R&R FABRICATION, INC. 170 SCHÖNER LANE PRINCE FREDERICK, MD 20678 (301) 855-9111 FAX (301) 855-9125	
FABRICATE BEAMS WITH MILL CAMBER UP ALL BLOCKS AND CUTS TO HAVE 1" RAD. AT CORNERS		HOLE DIA. 13/16 U.N.O. CLEAN: SSPC-SP2 PAINT: 1. NO PAINT U.N.O. 2. 3.		DRAWN BY HW 8-19 CHECKED BY DS 8-19 ENG. APPROVAL SE DAVIS		TITLE PRINCE FREDERICK VFD 450 SOLOMONS ISLAND RD, PRINCE FREDERICK, MD		SIZE JOB NUMBER REVISION DRAWING NO. D 1922	
						SCALE NONE SHEET OF		ONE	



- GENERAL NOTES:**
1. MATERIAL: WIDE FLG. ASTM A992
 2. MATERIAL: STEEL TUBING - ASTM A500 -GR. B
 3. MATERIAL: STEEL PIPE - ASTM A53 Gr.B
 4. MATERIAL: PLATES & ANGLES ASTM A36 U.N.O., STRUCTURAL PLATES ASTM A572-50
 5. MATERIAL: ANCHOR BOLTS ASTM F1554 GRADE 55 U.N.O.
 6. HOLES: 13/16" dia. , U.N.O.
 7. WELDING: E70xx LH.
 8. CONNECTIONS: "SHOP BOLTED / FIELD BOLTED" 3/4" dia. A325X (TYP. U.N.O.) "PRETENSIONED"
 9. PAINT: CLEAN TO SSPC-SP3, 2.5 MILS. (min.) DFT. STD GRAY SHOP PRIMER
 10. NO PAINT: STEEL TO BE EMBEDDED IN CONCRETE
 11. EXTERIOR "EXPOSED" STEEL (LINTEL BEAMS) TO BE "HOT DIP GALVANIZED" TO ASTM A123

ARCH PLEASE VERIFY
NOTE: DIMENSION
UPDATE

DIM. ACCEPTABLE
(BWH)



ANCHOR BOLT PLAN
FIN. FL. ELEV. = (0-0)
ELEV.S ARE TO T.O. FOOTING OR PIER

CONTRACTOR VERIFY METAL BUILDING ANCHOR BOLT SHALL
BE PROVIDED UNDER ANOTHER SUBMITTAL

FOR APPROVAL
Sep 05 2019

SPECIFICATIONS		FIELD BOLTING REQUIREMENT U.N.O.		REF. DESIGN DRG. NO.	REF. ERECTION DRG. NO.
M ASTM A992	FABRICATE BEAMS WITH MILL CAMBER UP	BOLT TYPE: A325	WASHER TYPE: F436	S1.01	AB1
PIPE ASTM A53 GRB	ALL BLOCKS AND CUTS TO HAVE 1" RAD. AT CORNERS	INSTALLATION: SNUG TIGHT			
TUBE ASTM A500-B					
ELECTRODE E 70xxLH					
ADDITIONAL SHOP NOTES		HOLE DIA. 13/16 U.N.O.			
		CLEAN: SSPC- SP3			
		PAINT:			
		1. STD GRAY SHOP PRIMER			
		2. 2.5 MILS (UND)			
		3.			
SE DAVIS				DRAWN BY HW 8-19	DATE 8-19
SE DAVIS				CHECKED BY DS 8-19	DATE 8-19
SE DAVIS				ENG. APPROVAL	CUSTOMER
SCALE NONE		SIZE D	JOB NUMBER 1922	REVISION	DRAWING NO. AB1
SCALE NONE		SCALE NONE	SHEET OF		

R&R FABRICATION, INC.
170 SCHÖNER LANE
PRINCE FREDERICK, MD 20678
(301) 855-9111 FAX (301) 855-9125

PRINCE FREDERICK VFD
450 SOLOMONS ISLAND RD, PRINCE FREDERICK, MD

Sep 05 2019 11:37:18 AM LAST PLOTTED

