

SHEAR STUD GENERAL NOTES

1. SHEAR STUDS SHALL BE PLACED PER AISC SPECIFICATIONS.
2. FOR GIRDER BEAMS (DECK RIBS ORIENTED PARALLEL TO BEAM), SHEAR STUDS SHALL BE EQUALLY SPACED. EQUAL SPACING SHALL NOT BE LESS THAN SIX STUD DIAMETERS (3/4 X 6=4 1/2 INCHES) NOR GREATER THAN 36 INCHES ON CENTER.
3. FOR TRANSVERSE FILLER BEAMS (DECK RIBS ORIENTED PERPENDICULAR TO STEEL BEAM), SHEAR STUDS SHALL BE PLACED IN BOTTOM FLUTES OF DECK RIBS. STUDS SHALL BE DISTRIBUTED EQUALLY ALONG ENTIRE LENGTH OF BEAM IN SPACING OF 12, 24 OR 36 INCHES. WHEN THE NUMBER OF STUDS EXCEEDS THE NUMBER OF BOTTOM FLATS AVAILABLE FOR A SINGLE ROW OF STUD PLACEMENT, THE EXCESS NUMBER OF STUDS SHALL BE EQUALLY DIVIDED AND A SECOND ROW SHALL BE STARTED ON EACH END OF THE BEAM. THE STUD APPLICATOR MUST BE AWARE OF THIS CONDITION BEFORE ANY PLACEMENT WILL BE CENTERED TRANSVERSELY ON THE BEAM. SPACING OF STUDS TRANSVERSE TO LONGITUDINAL AXIS OF THE SUPPORTING COMPOSITE BEAM SHALL BE A MINIMUM OF FOUR STUD DIAMETERS (EX: 3/4 X 4 = 3 INCHES) ON CENTER.
4. NO. (XX) INDICATES THE TOTAL NUMBER OF STUDS EVENLY SPACED ALONG THE BEAM TOP FLANGE. SEE STUD QUANTITY PLAN FOR STUD SIZE AND QUANTITIES.



5. THE QUANTITY OF SHEAR STUDS PROVIDED BY VULCRAFT/VERCO GROUP IS PERFORMED AS A SERVICE TO ITS CUSTOMERS. THESE QUANTITIES ARE OBTAINED DIRECTLY FROM THE STRUCTURAL DRAWINGS. THESE QUANTITIES WILL NOT BE DERIVED BY VULCRAFT/VERCO GROUP BASED ON O.C. SPACING OR STRUCTURAL MEMBERS. HOWEVER, THE FINAL RESPONSIBILITY LIES WITH THE STRUCTURAL ENGINEER OF RECORD. IF A DISCREPANCY EXISTS BETWEEN THE STRUCTURAL DRAWINGS AND THE VULCRAFT/VERCO DRAWING, THE STRUCTURAL DRAWING SHALL GOVERN.

6. THE VULCRAFT/VERCO GROUP SHEAR STUD QUANTITY DRAWINGS ARE SUBMITTED TO THE STRUCTURAL ENGINEER OF RECORD FOR REVIEW TO APPROVE AND/OR CHANGE AS THEIR RESPONSIBILITY AND EXPERIENCE DICTATE.

VULCRAFT/VERCO GROUP WILL NOT, UNDER ANY CIRCUMSTANCES, DEVIATE FROM THE ABOVE.

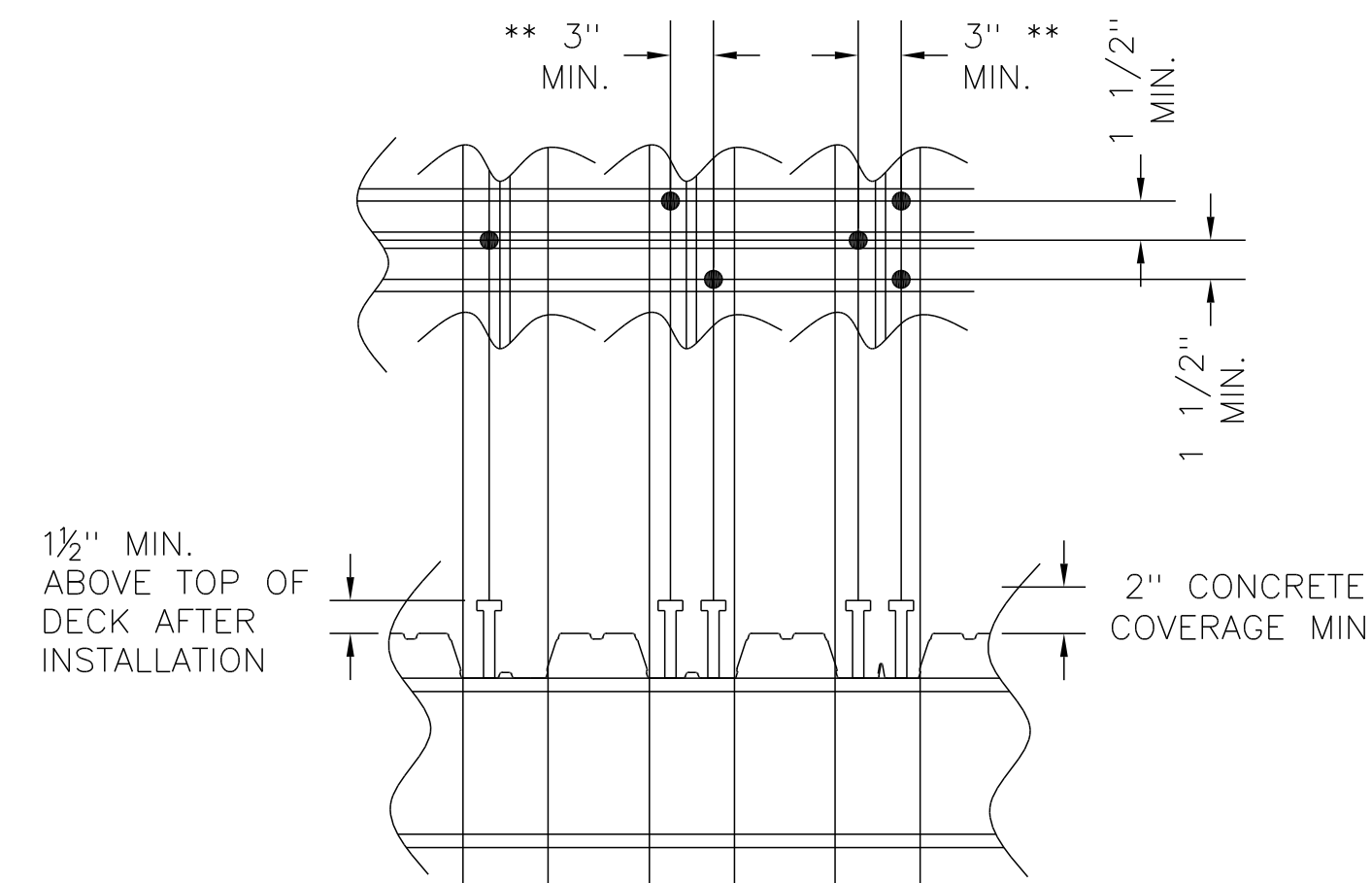
DECK PERPENDICULAR TO SUPPORTS

(SDI STANDARD DETAIL PRACTICES, MAY 2001)

CASE 1 ----- FEWER STUDS THAN VALLEYS
 DESIGNATION ----- (XX) INDICATES NUMBER OF STUDS
 PROCEDURE ----- PLACE A STUD IN ALTERNATING FLUTES FOR ENTIRE LENGTH OF BEAM (EVERY FOURTH FLUTE IF RIBS ARE 6" O.C.). PLACE REMAINING STUDS IN FLUTES NOT ALREADY HAVING A STUD, STARTING NEAR BEAM ENDS AND CONTINUING TOWARD BEAM CENTER. MAXIMUM SPACING ALLOWED IS 36" O.C. OR 8 TIMES THE SLAB HEIGHT, WHICHEVER IS LESS. SEE SKETCH FOR APPROXIMATE LOCATION OF SINGLE STUDS IN FLUTES.

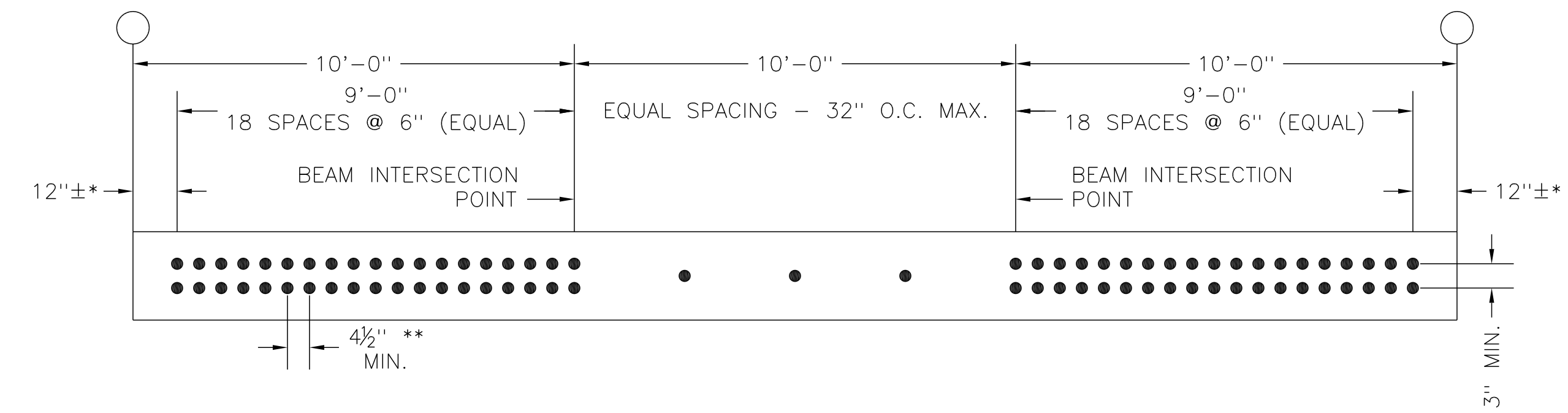
CASE 2 ----- MORE STUDS THAN VALLEYS.
 DESIGNATION ----- (XX) INDICATES NUMBER OF STUDS
 PROCEDURE ----- PLACE A STUD IN ALL AVAILABLE FLUTES, IF STUDS REMAIN, PLACE A SECOND STUD IN FLUTES NEAR BEAM ENDS AND CONTINUE PLACING A SECOND STUD IN EACH FLUTE TOWARD BEAM CENTER. IF STUDS REMAIN, PLACE A THIRD STUD IN FLUTES NEAR BEAM ENDS AND CONTINUE PLACING A THIRD STUD IN EACH FLUTE TOWARD BEAM CENTER. SEE SKETCH FOR APPROXIMATE LOCATION FOR TWO OR THREE STUDS IN FLUTES.

SKETCH ----- CASE 1 AND 2



DECK PARALLEL TO SUPPORTS

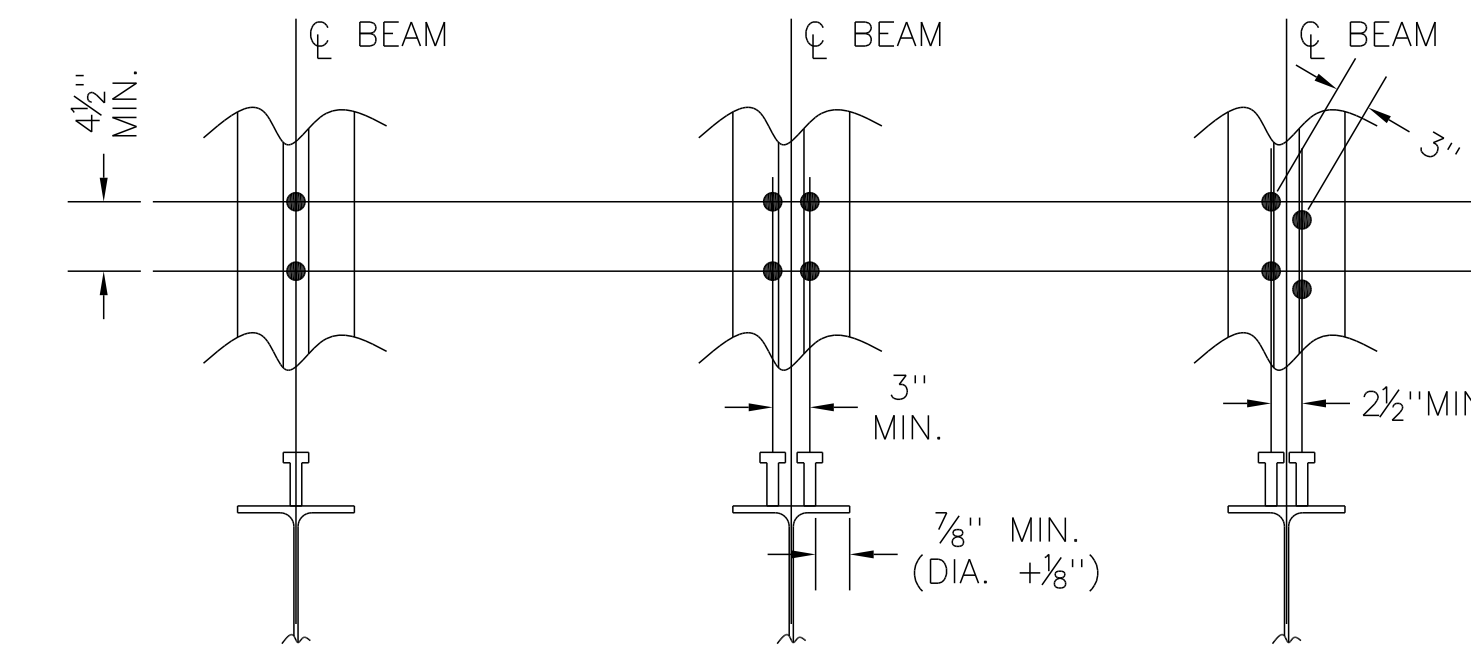
(SDI STANDARD DETAIL PRACTICES, MAY 2001)



CASE 3 ----- THIRD POINT LOAD BEARING GIRDER
 DESIGNATION ----- (38-3-38) (EXAMPLE SHOWN ABOVE)
 PROCEDURE ----- PLACE A SINGLE ROW OF STUDS AT END THIRD'S OF A GIRDER AT EQUAL SPACES. IF SPACING IS LESS THAN 4 1/2"**, USE DOUBLE ROW AS REQUIRED, (EXAMPLE SHOWN ABOVE) IN MIDDLE THIRD OF BEAM. PLACE STUDS AT EQUAL SPACES NOT TO EXCEED 36" O.C. OR 8 TIMES HEIGHT OF SLAB, WHICHEVER IS LESS.

CASE 4 ----- ALL DECK PARALLEL TO SUPPORTS EXCEPT CASE 3 AS SHOWN ABOVE.
 DESIGNATION ----- (10) TOTAL NUMBER OF STUDS ON BEAM TO BE EQUALLY SPACED.
 PROCEDURE ----- PLACE A SINGLE ROW OF STUDS ALONG GIRDER AT EQUAL SPACING. IF SPACING IS LESS THAN 4 1/2"**, USE DOUBLE ROW AS REQUIRED. SIMILAR AS SHOWN ABOVE.

* NOTE: GENERALLY, FIRST STUD IS PLACED 12" FROM COLUMN CENTER LINE.±



PRINCE FREDERICK VOLUNTEER FIRE STA
 Customer Job #: 034-19-0283
 SALES OFFICE NO. 34
 9/16/2019 10:30:05 AM
 Use Adobe Acrobat (or Reader) or Bluebeam REVU to view this PDF drawing. Note: Vulcraft cannot guarantee the viewability with the use of other software.

FOR APPROVAL ONLY
 GENERAL CONTRACTOR
 NOT FOR FIELD USE
 VERIFICATION OF DIMENSIONS, DETAILS, ETC. ARE REQUESTED WHERE INDICATED. MATERIAL WILL NOT BE RELEASED UNTIL APPROVED BY EACH VERIFICATION ADDRESSSES.
 09/16/2019

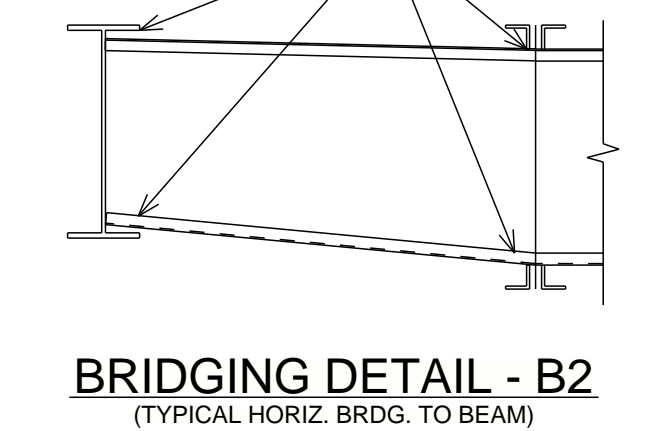
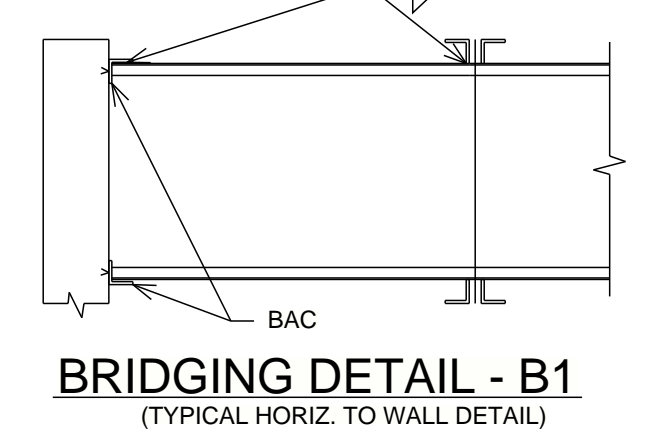
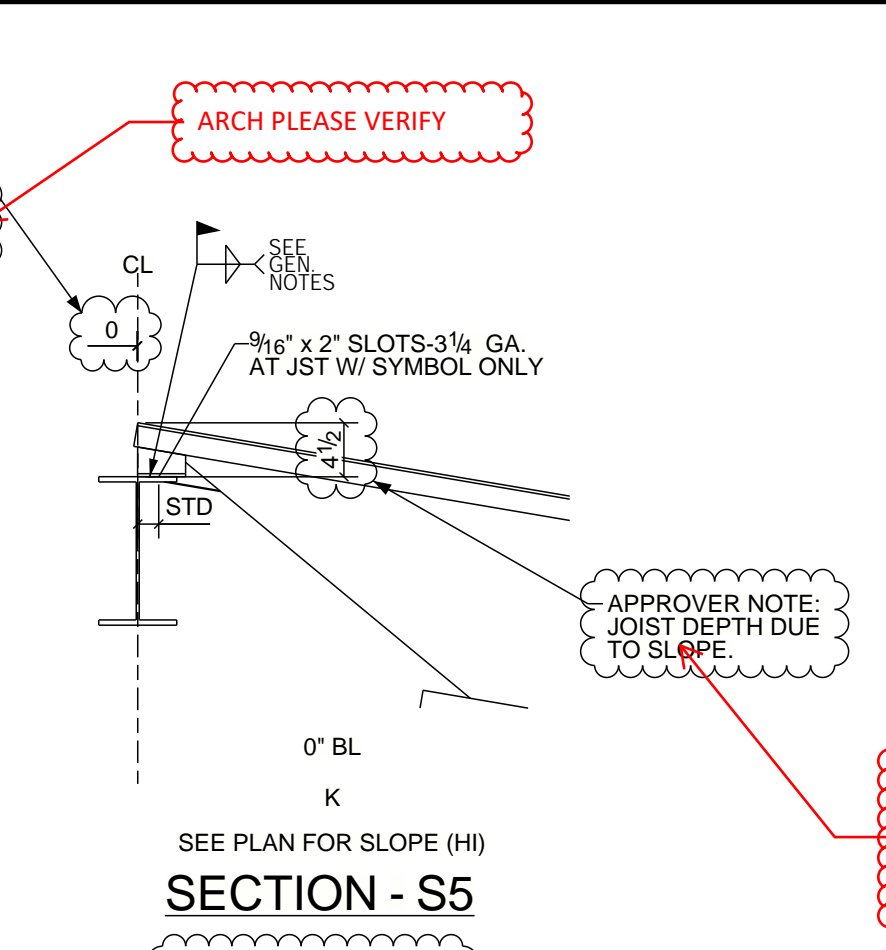
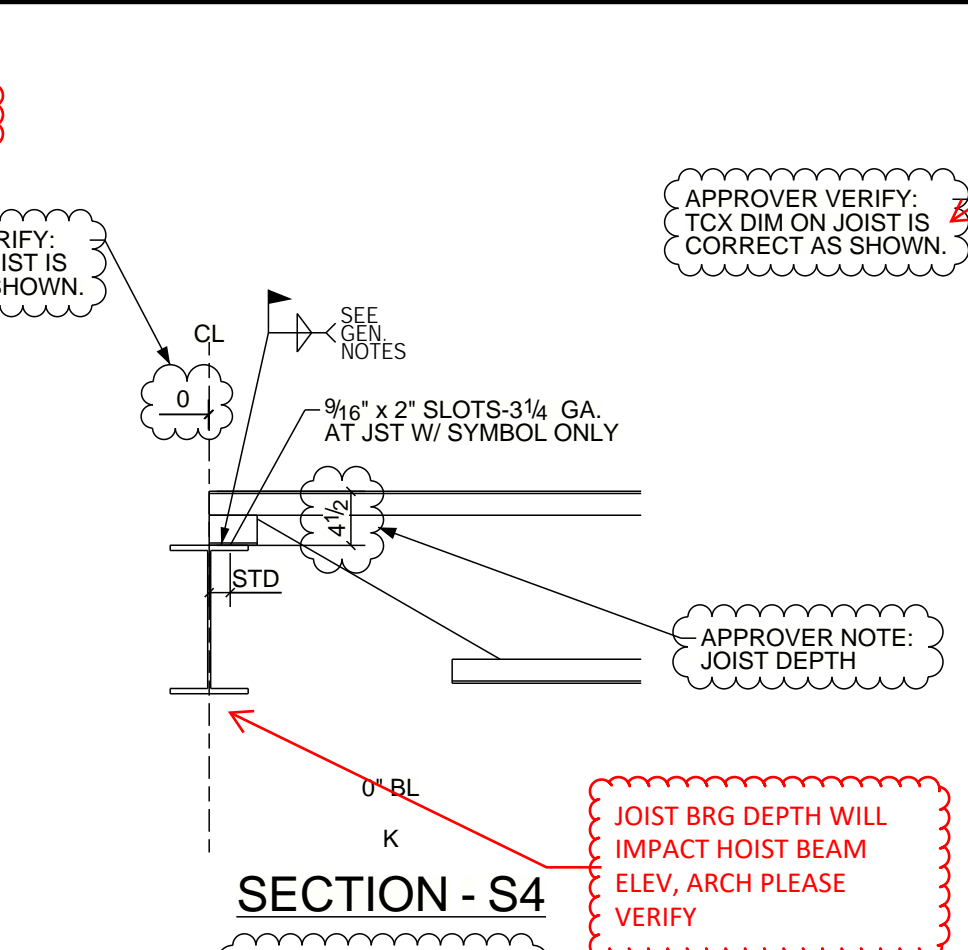
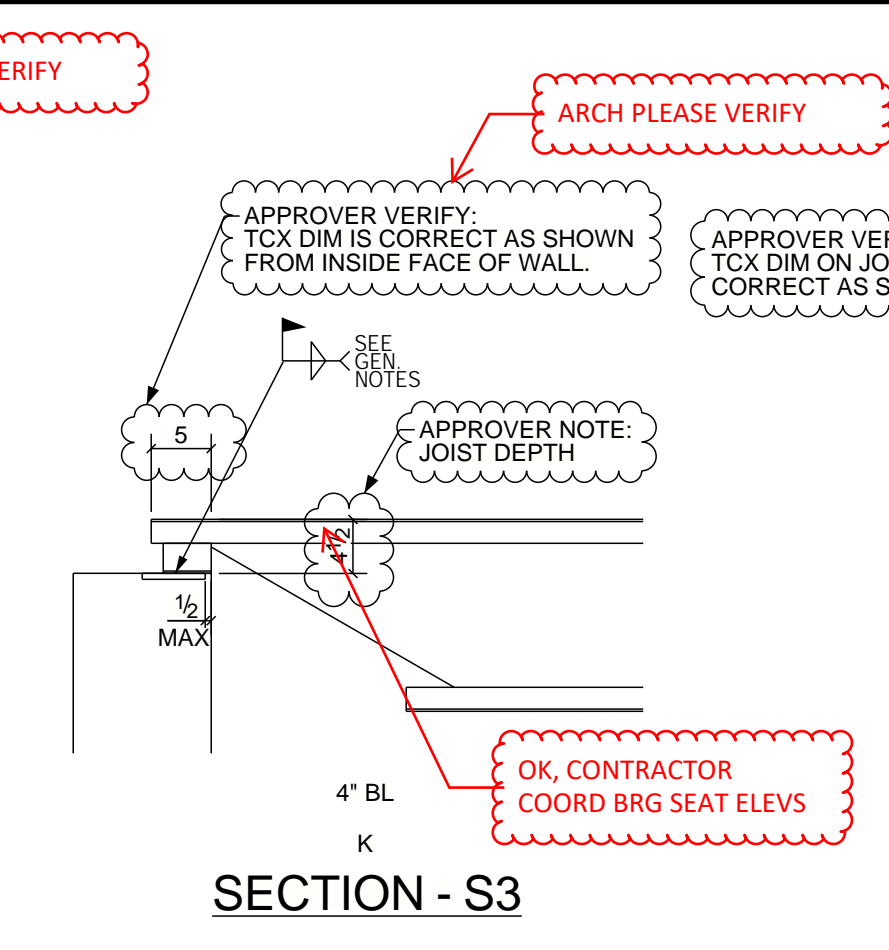
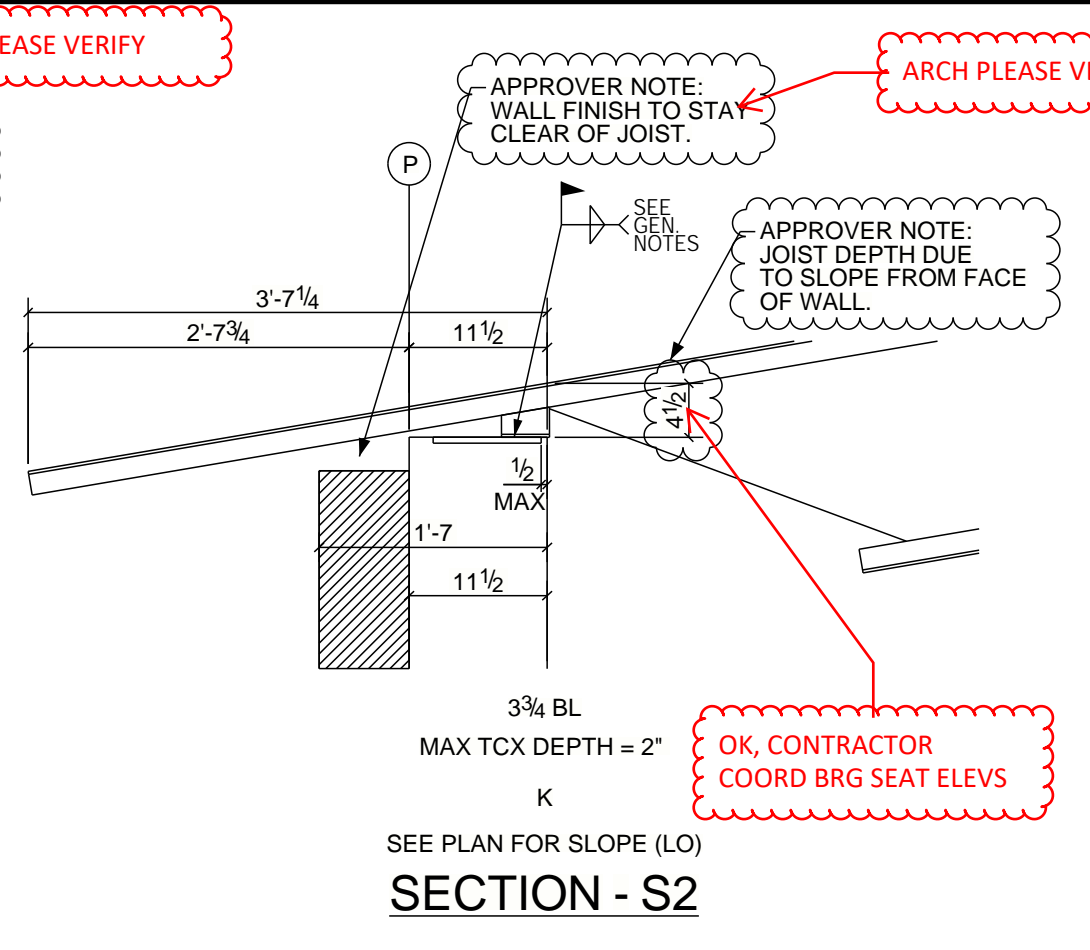
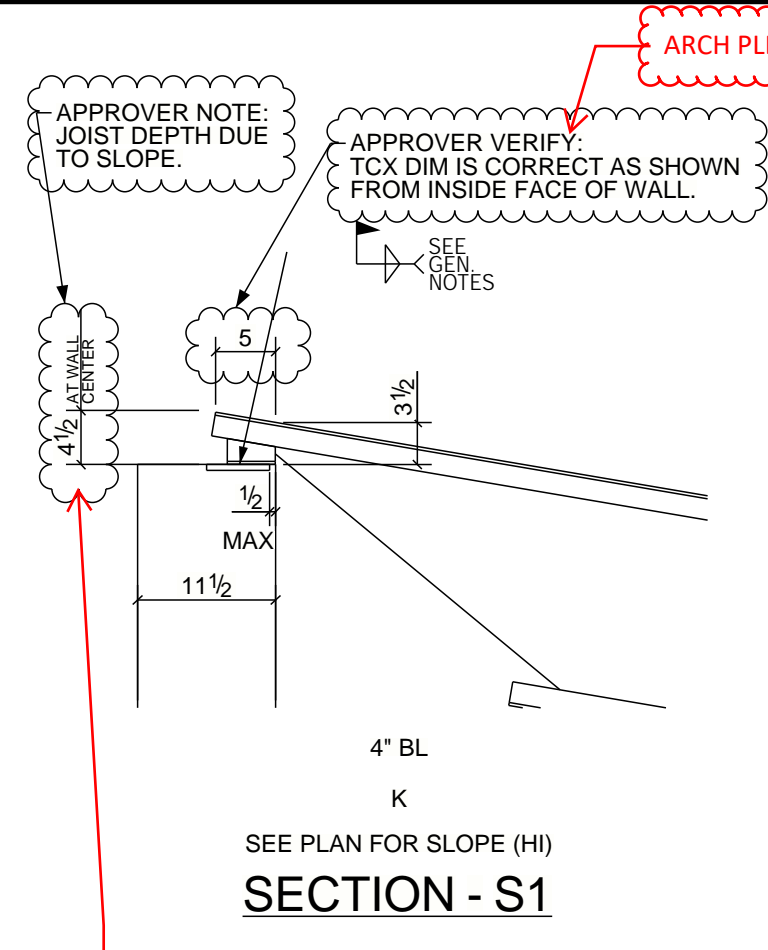
DESCRIPTION	DATE
JOIST BRIDGING PRIMER U.N.O. Gray 1 COAT(S)	
DETAILED BY: TRC 09/11/2019 402-844-2536 Travis.Christiansen@nucoor***	
CHECKED BY: TRC 09/11/2019 402-844-2536 Travis.Christiansen@nucoor***	
ST1	

APPROVER NOTE:
 VULCRAFT/VERCO DOES NOT REVISE JOIST OR DECK TYPES, SIZES, GAUGES, FINISHES, SUPPORT ATTACHMENTS, OR SUPPORT SPACING FOR U.L. DESIGNS, FM, OR OTHER BUILDING CODES WHICH HAVE BEEN INDICATED. IN ADDITION, SOME U.L. DESIGNS CONTAIN RESTRICTIONS ON PRODUCT MEMBER OR MATERIAL SIZES, BRIDGING SIZES, ETC. MAKE CERTAIN ALL PRODUCT SELECTIONS HAVE BEEN MADE ACCORDINGLY AND DENOTE ANY CHANGES.

The General Notes on Drawing C1 are a part of this drawing and must be referenced
 ONLY PROCEED WITH A COPY OF C1



© Nucor Corporation, 2019. All rights reserved. This drawing may not be reproduced in whole or in part for any purpose without Nucor's prior written consent.



STRUCTURAL ENGINEER:
PLEASE SUPPLY LOADING VULCRAFT IS TO DESIGN JOIST TOP CHORD EXTENSION TO CARRY:
TOTAL UNIFORM LOAD = _____ PLF
LIVE LOAD = _____ PLF
IF REQUIRED, SUPPLY LOAD AT END OF TCX: _____ LBS

TL = 275 PLF
LL = 165 PLF
TCX = 40 LBS

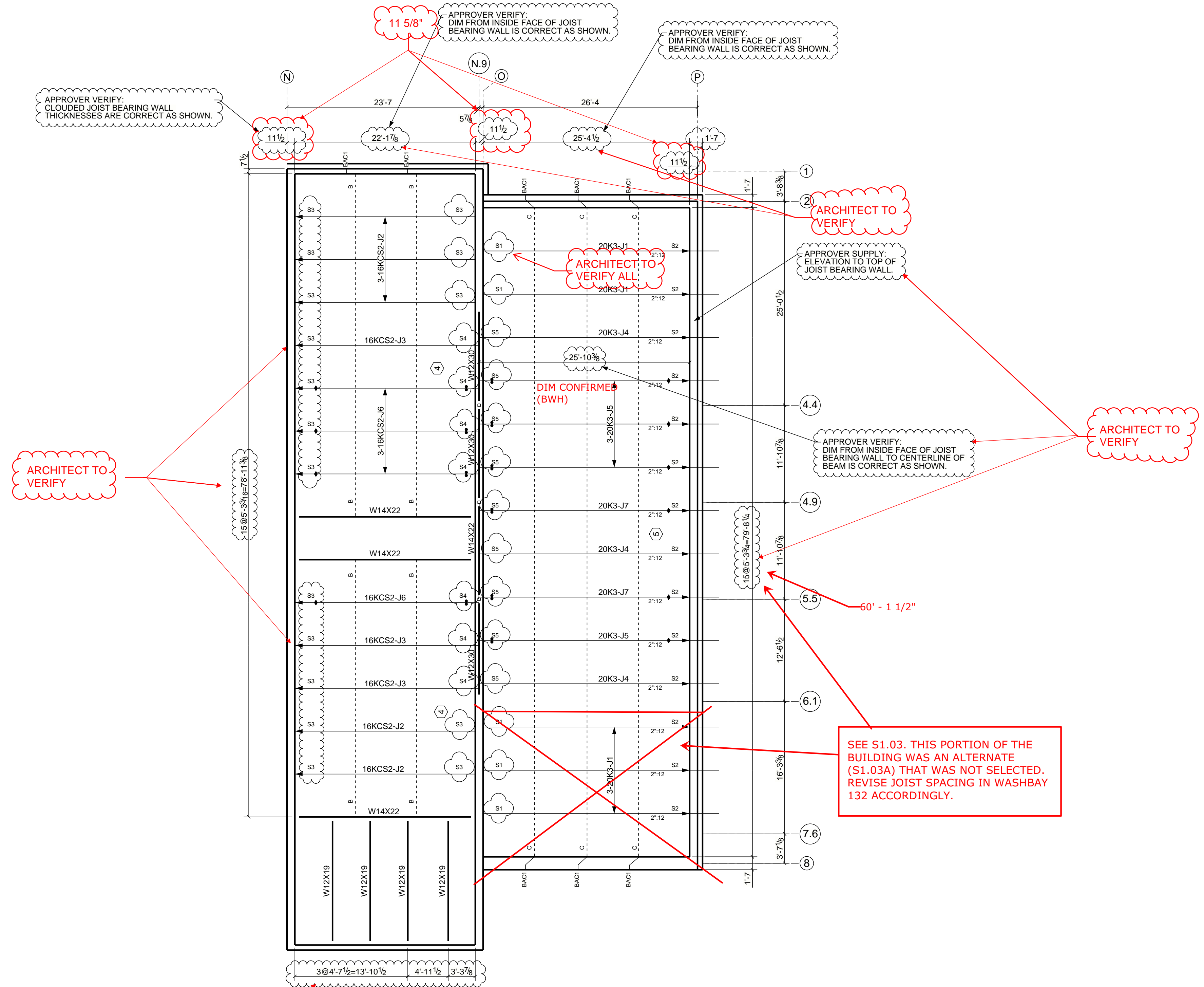
OK, CONTRACTOR COORD BRG SEAT ELV'S

OK, CONTRACTOR COORD BRG SEAT ELV'S

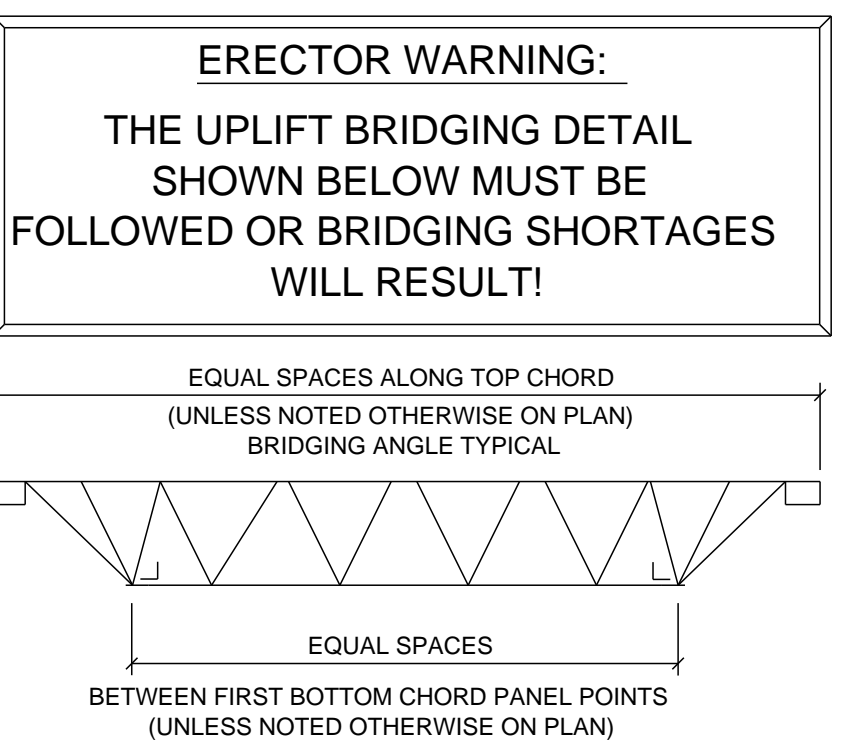
OK, CONTRACTOR COORD BRG SEAT ELV'S

JOIST BRG DEPTH WILL IMPACT HOIST BEAM ELEV. ARCH PLEASE VERIFY

JOIST BRG DEPTH WILL IMPACT HOIST BEAM ELEV. ARCH PLEASE VERIFY



ROOF - FRAMING PLAN
REF: S1.03A - DATED: 1/25/19
SEQUENCE 2: ROOF
- TOA 5, TAG WHITE, SUMMARY 1, ROOF



12 PSF

STRUCTURAL ENGINEER:
PLEASE PROVIDE PERMANENT DL TO BE USED IN CALCULATING ASD BASED NET UPLIFT FOR DESIGN (0.6D + 0.6W).

○ = NUMBER OF ROWS OF B.C. BRIDGING. THIS INCLUDES BOLTED 'X' IF REQ'D.

STRUCTURAL ENGINEER:
NOTE: KCS JOISTS SHOULD BE INCLUSIVE OF ALL LOADS AND JOISTS MUST BE DESIGNATED FOR ALL LOADS APPLIED EXCEPT FOR NET UPLIFT. PLEASE VERIFY THAT ALL LOADS (EXCEPT NET UPLIFT) HAVE BEEN INCORPORATED INTO THE KCS JOIST SELECTION. IF NOT, PLEASE REVISE THE KCS JOIST SELECTION AS NECESSARY. [] KCS DESIGNATION ACCEPTABLE
PLEASE NOTE THAT ANY LOAD THAT EXCEEDS 100 POUNDS AND IS NOT LOCATED AT A PANEL POINT SHALL HAVE A FIELD INSTALLED STRUT MEMBER AT THAT LOCATION.

APPROVER VERIFY:
PLEASE VERIFY/PROVIDE THE CLOUDED JOIST SPACING DIMENSIONS ARE CORRECT AS SHOWN. () YES () NO. IF NO PLEASE PROVIDE CORRECT SPACING. THIS INFORMATION COULD NOT BE OBTAINED FROM THE CONTRACT DRAWINGS.

CORRECTIONS TO DIMENSIONS HAVE BEEN NOTED. ALL DIMENSIONS AND NOTES HAVE BEEN REVIEWED AD (BWH)

APPROVER VERIFY:
PLEASE VERIFY/PROVIDE THE CLOUDED JOIST SECTION CUTS ARE CORRECT AS SHOWN. () YES () NO. IF NO PLEASE PROVIDE CORRECT SECTION CUTS. THIS INFORMATION COULD NOT BE OBTAINED FROM THE CONTRACT DRAWINGS.

APPROVER NOTE:
VULCRAFT/VERCO DOES NOT REVISE JOIST OR DECK TYPES, SIZES, GAUGES, FINISHES, SUPPORT ATTACHMENTS, OR SUPPORT SPACING FOR U.L. DESIGNS, FM, OR OTHER BUILDING CODES WHICH HAVE BEEN INDICATED. IN ADDITION, SOME U.L. DESIGNS CONTAIN RESTRICTIONS ON PRODUCT MEMBER OR MATERIAL SIZES, BRIDGING SIZES, ETC. MAKE CERTAIN ALL PRODUCT SELECTIONS HAVE BEEN MADE ACCORDINGLY AND DENOTE ANY CHANGES.

ARCHITECT TO VERIFY

APPROVER VERIFY:
ONE COAT OF VULCRAFT STANDARD GRAY SHOP PRIMER IS ACCEPTABLE?

DANGER

A FALL CAUSING SERIOUS INJURY OR DEATH MAY RESULT FROM FAILURE TO FOLLOW ALL SAFETY PRECAUTIONS

- JOISTS HAVE NOT been designed for stability or to support your weight without bridging installed.
- DO NOT WALK, STAND, OR ALLOW LOADS on joists until adequately stabilized.
- ALWAYS USE FALL PROTECTION when fall hazard is present and FOLLOW ALL OSHA SAFETY REGULATIONS.
- Joists and or near columns ARE NOT designed to resist OSHA 29 CFR 1926.757 (K3).
- ALWAYS STABILIZE joists BEFORE RELEASING HOISTING CABLES using approved erection methods.

Gray 1 COAT(S)

TRC
09/10/2019
402-844-2536
Travis.Christiansen@nucoor.com

CHECKED BY:
TRC
09/10/2019
402-844-2536
Travis.Christiansen@nucoor.com

The General Notes on Drawing C1 are a part of this drawing and must be referenced. ONLY PROCEED WITH A COPY OF C1

NUCOR
VULCRAFT/VERCO GROUP
621 Main Street
Chemung, NY 14825
807.529.9000
807.529.9001
www.vulcraft.com

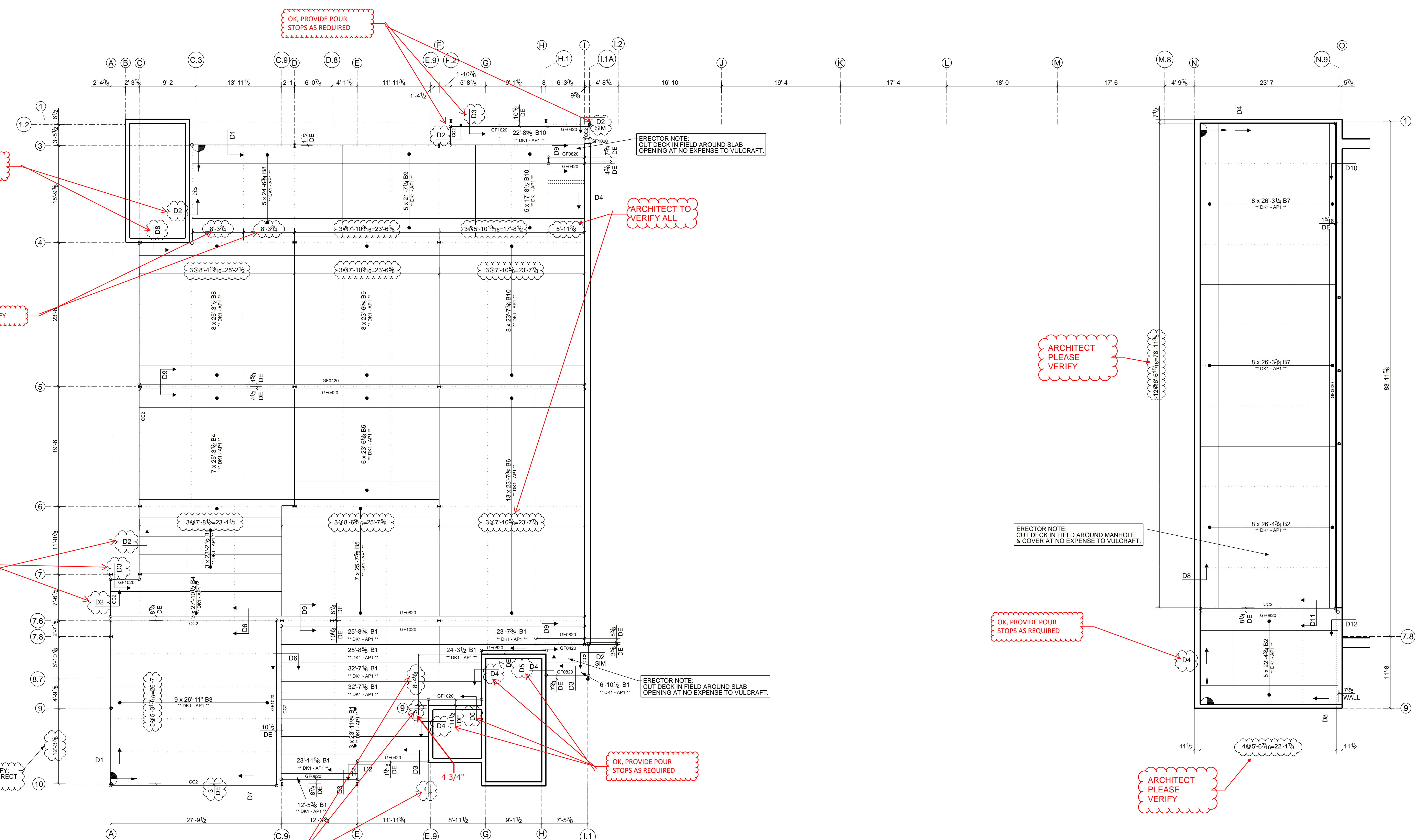
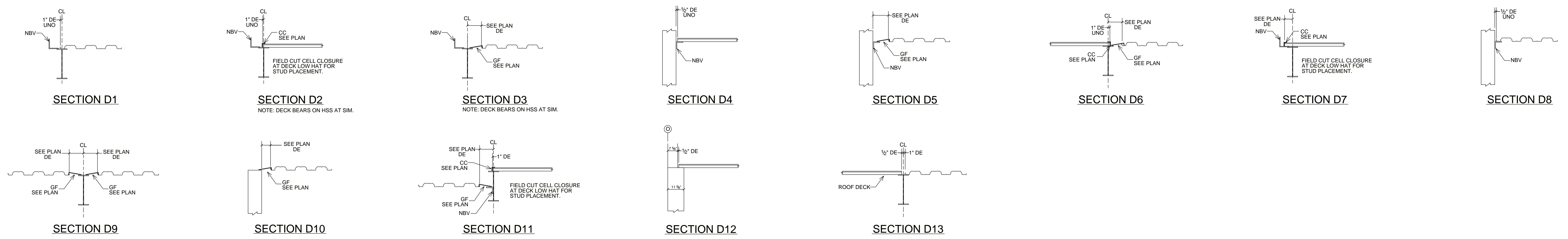
MADE IN USA

PRINCE FREDERICK VOLUNTEER FIRE STA
Customer Job #: _____
FREDERICK, MD
WATSON STEEL, LLC
BEL AIR, MD
JOB NO.: 034-19-0283
SALES OFFICE NO. 34
9/16/2019 10:30:13 AM
Use Adobe Acrobat (or Reader) or Bluebeam REVU to view this PDF drawing. Note: Vulcraft cannot guarantee the viewability with the use of other software.

GENERAL CONTRACTOR
FOR APPROVAL ONLY
NOT FOR FIELD USE
VERIFICATION OF DIMENSIONS, DETAILS, ETC. ARE REQUESTED WHERE INDICATED. MATERIAL WILL NOT BE RELEASED WHERE INDICATED. MATERIAL TO BE VERIFIED AT ADDRESS:
09/16/2019

DATE _____
DESCRIPTION _____

J1



SECOND FLOOR - DECKING PLAN
 REF: S1.02A - DATED: 1/25/19
 SEQUENCE: 1, SECOND FLOOR
 -TOA-4, TAG BLUE, SUMMARY: 1, SECOND FLOOR

VULCRAFT STEEL DECK ** NOTE DK1 **
 TYPE = 2VL1 GAGE = 20
 SHOP PRIMER (TOP/BOTTOM) = NONE/NONE ON G90 GALVANIZED SHEET
 36 INCHES NET LAY

**** AP1 ****
 FASTEN USING 384 PATTERN AT END LAPS (3/4 WELD OR EQUIV)
 FASTEN USING 384 PATTERN AT INTERMEDIATE SUPPORTS (3/4 WELD OR EQUIV)
 FASTEN SIDE LAPS AT 8 PLACES PER SPAN EQUALLY SPACED (1 1/2 SEAM WELD)
 END LAPS OCCUR AT SUPPORTS ONLY
 MINIMUM LAP = 0 INCHES

2VL1 384 PATTERN AT ALL SUPPORTS

CELL CLOSURES					
MARK	A	B	GAGE	LENGTH	FINISH
CC2	2"	11"	20	10'	G60

GF-GIRDER FILLERS					
MARK	A	B	GAGE	LENGTH	FINISH
GF1020	1 1/2"	4"	20	10'	G60
GF1020	1 1/2"	6"	20	10'	G60
GF1020	1 1/2"	8"	20	10'	G60
GF1020	1 1/2"	10"	20	10'	G60

COLUMN CLOSURES					
MARK	A	B	GAGE	LENGTH	FINISH
CL1	1"	2"	20	0"	G60

CORRECTIONS TO DIMENSIONS HAVE BEEN NOTED - ALL DIMENSIONS AND NOTES HAVE BEEN REVIEWED (BWH)

ERECTOR NOTE:
 FIELD CUT DECK AS REQUIRED FOR OPENINGS 4"x4" OR SMALLER, AT NO ADDITIONAL COST TO VULCRAFT.

ERECTOR NOTE:
 CUT DECK IN FIELD AS REQ'D AT ALL OPENINGS, SKEWED CUTS AND LENGTHWISE CUTS AT NO ADDITIONAL COST TO VULCRAFT

ERECTOR NOTE:
 DENOTES START POINT OF DECK LAYOUT

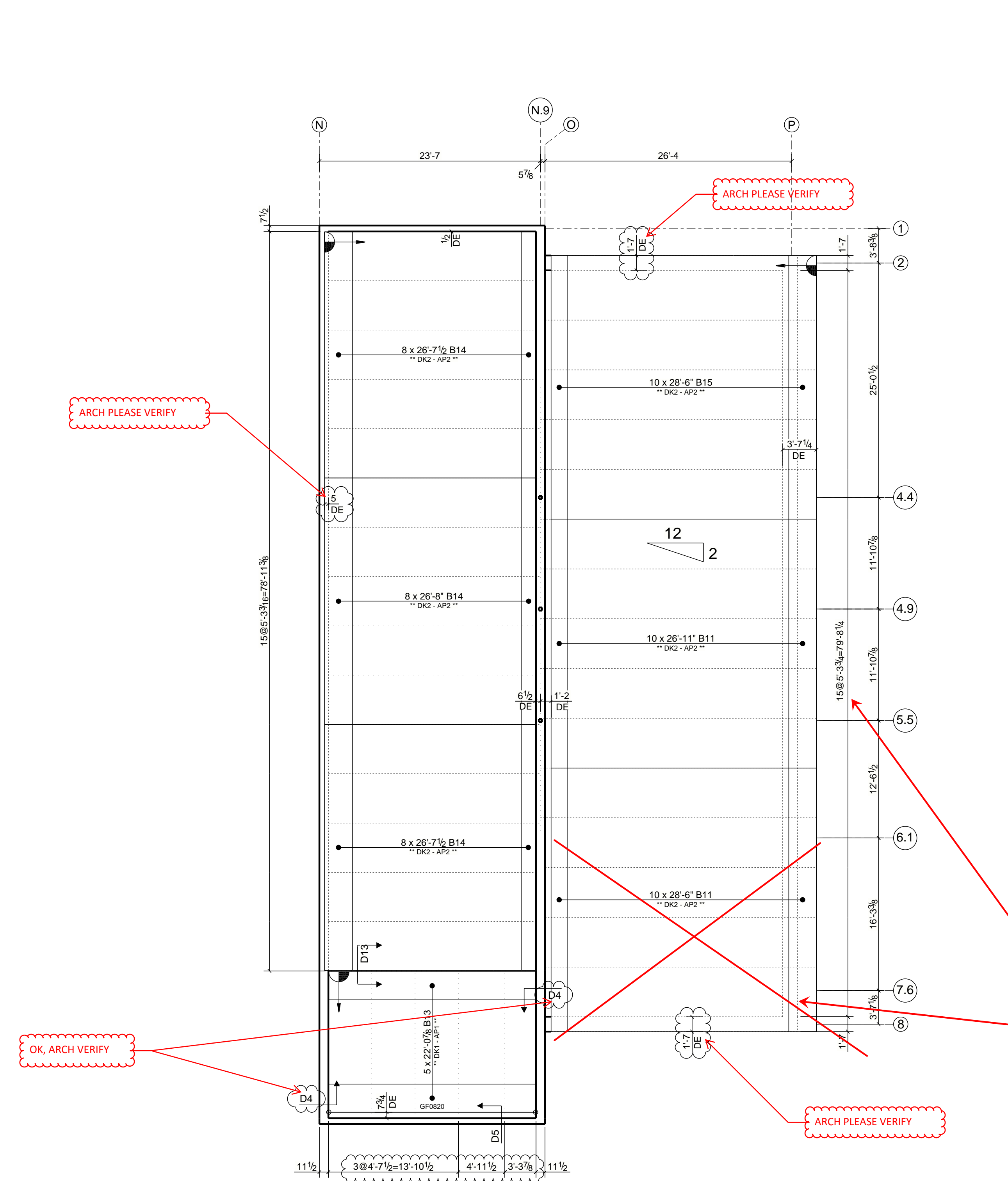
APPROVER VERIFY:
 PLEASE VERIFY THE CLOUDED DIMENSIONS FOR BEAM SPACING TO LOCATE STRUCTURE SUPPORTING DECK. THIS INFORMATION COULD NOT BE OBTAINED FROM THE CONTRACT DRAWINGS.

APPROVER VERIFY:
 PLEASE VERIFY IS THERE IS ANY ROLLED IN HANGER TABS REQUIRED FOR THE COMPOSITE (FLOOR) DECK.

APPROVER VERIFY:
 PLEASE VERIFY THE CLOUDED DECK SECTIONS ARE CORRECT AS SHOWN. [] YES [] NO THIS INFORMATION COULD NOT BE OBTAINED FROM THE CONTRACT DRAWINGS.

APPROVER NOTE:
 VULCRAFT/VERCO DOES NOT REVISE JOIST OR DECK TYPES, SIZES, GAUGES, FINISHES, SUPPORT ATTACHMENTS, OR SUPPORT SPACING FOR U.L. DESIGNS, FM, OR OTHER BUILDING CODES WHICH HAVE BEEN INDICATED. IN ADDITION, SOME U.L. DESIGNS CONTAIN RESTRICTIONS ON PRODUCT MEMBER OR MATERIAL SIZES, BRIDGING SIZES, ETC. MAKE CERTAIN ALL PRODUCT SELECTIONS HAVE BEEN MADE ACCORDINGLY AND DENOTE ANY CHANGES.

GENERAL NOTES ON DRAWING C1 ARE A PART OF THIS DRAWING AND MUST BE REFERENCED
****ONLY PROCEED WITH A COPY OF C1****



ROOF - DECKING PLAN
REF: S1.03A - DATED: 1/25/19
SEQUENCE 2, ROOF
- TOA 3, TAG GREEN, SUMMARY 4, ROOF
- TOA 5, TAG WHITE, SUMMARY 2, ROOF - FLOOR DECK
- TOA 5, TAG YELLOW, SUMMARY 3, ROOF - ROOF DECK
REF: D1 FOR SECTIONS

VULCRAFT STEEL DECK ** NOTE DK1 **
TYPE = 2VLJ GAGE = 20
SHOP PRIMER (TOP/BOTTOM) = NONE/NONE ON G90 GALVANIZED SHEET
36 INCHES NET LAY

**** AP1 ****
FASTEN USING 36/4 PATTERN AT END LAPS (% WELD OR EQUIV)
FASTEN USING 36/4 PATTERN AT INTERMEDIATE SUPPORTS (% WELD OR EQUIV)
FASTEN SIDE LAPS AT 6 PLACES(S) PER SPAN EQUALLY SPACED (SCREWS S1-#10)
END LAPS OCCUR AT SUPPORTS ONLY
MINIMUM LAP = 0 INCHES

VULCRAFT STEEL DECK ** NOTE DK2 **
TYPE = 1.5B GAGE = 20
SHOP PRIMER (TOP/BOTTOM) = GRAY/GRAY ON G60 GALVANIZED SHEET
36 INCHES NET LAY

**** AP2 ****
FASTEN USING 36/4 PATTERN AT END LAPS (% WELD OR EQUIV)
FASTEN USING 36/4 PATTERN AT INTERMEDIATE SUPPORTS (% WELD OR EQUIV)
FASTEN SIDE LAPS AT 4 PLACES(S) PER SPAN EQUALLY SPACED (SCREWS S1-#10)
END LAPS OCCUR AT SUPPORTS ONLY
MINIMUM LAP = 4 INCHES

VULCRAFT STEEL DECK ** NOTE DK3 **
TYPE = 1.5B GAGE = 18
SHOP PRIMER (TOP/BOTTOM) = GRAY/GRAY ON G60 GALVANIZED SHEET
36 INCHES NET LAY

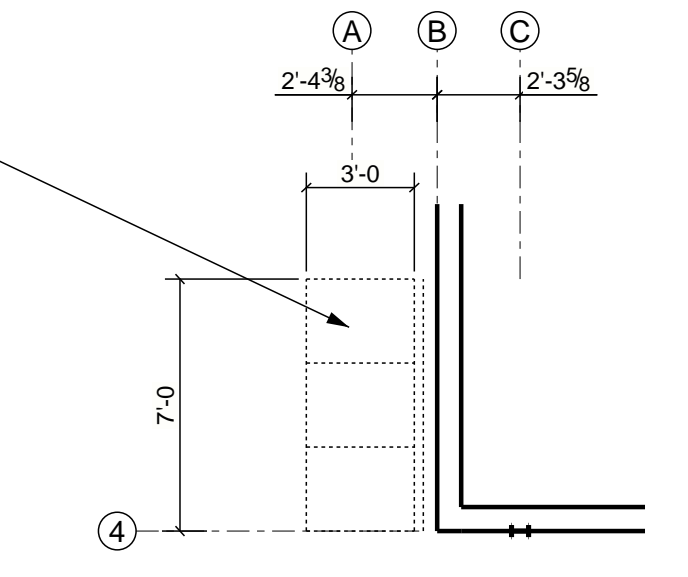
**** AP3 ****
FASTEN USING 36/4 PATTERN AT END LAPS (% WELD OR EQUIV)
FASTEN USING 36/4 PATTERN AT INTERMEDIATE SUPPORTS (% WELD OR EQUIV)
FASTEN SIDE LAPS AT 4 PLACES(S) PER SPAN EQUALLY SPACED (SCREWS S1-#10)
END LAPS OCCUR AT SUPPORTS ONLY
MINIMUM LAP = 4 INCHES

APPROVER VERIFY:
PLEASE VERIFY IF VULCRAFT IS TO SUPPLY 1.5B (ROOF DECK) OVER TRUSSES (REF: S1.03A). SECTIONS 6.7, 12, 13/S5.02 OF THE STRUCTURALS, DO NOT SEEM TO HAVE DECK ON TRUSSES. 1/A3.04 OF THE ARCH'S CALL OUT A PRE ENGINEERED METAL BLDG MANUFACTURER ROOF ON THE TRUSSES.

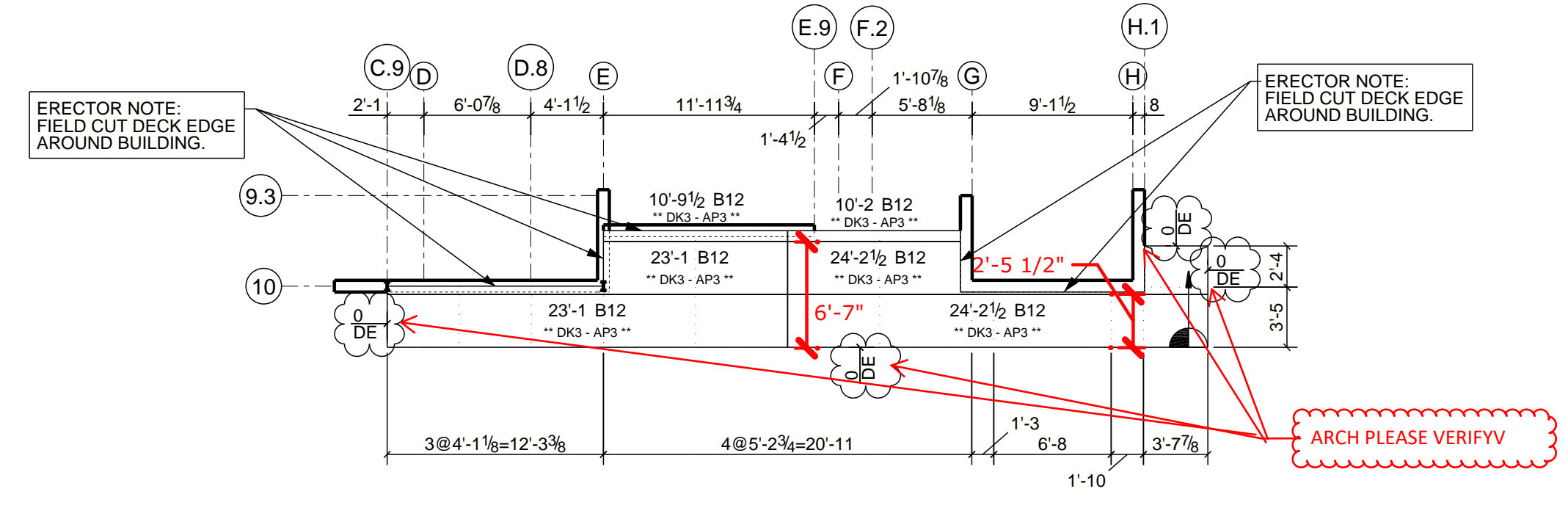
YES, VULCRAFT IS TO SUPPLY 1.5B DECK ON ROOF TRUSSES
 NO, ROOF SYSTEM IS BY OTHERS

SEE S1.03. THIS PORTION OF THE BUILDING WAS AN ALTERNATE (S1.03A) THAT WAS NOT SELECTED. REVISE DESIGN ACCORDINGLY.

CANOPY DECK
CUT & FIT AT NO EXPENSE TO VULCRAFT
SEQUENCE 2, ROOF
- TOA 5, TAG YELLOW, SUMMARY 3, ROOF - ROOF DECK
(2) B16 8'-0" DK2-AP2



STAIR 2 CANOPY - DECKING PLAN
REF: S1.04 - DATED: 1/25/19
SEQUENCE 2, ROOF
- TOA 3, TAG GREEN, SUMMARY 4, ROOF



FRONT CANOPY - DECKING PLAN
REF: S1.04 - DATED: 1/25/19
SEQUENCE 2, ROOF
- TOA 3, TAG GREEN, SUMMARY 4, ROOF

DECK B/W GRIDS A-C.3, 1-4
REF: 10 & 11/S5.02
SEQUENCE 2, ROOF
- TOA 5, TAG YELLOW, SUMMARY 3, ROOF - ROOF DECK
(2) B16 8'-0" DK2-AP2

DECK B/W GRIDS F-H.1, 1-3
REF: 9/S5.02
SEQUENCE 2, ROOF
- TOA 5, TAG YELLOW, SUMMARY 3, ROOF - ROOF DECK
(6) B16 8'-0" DK2-AP2

DECK ACCESSORIES
SEQUENCE 2, ROOF
- TOA 3, TAG GREEN, SUMMARY 4, ROOF
(200) S1 #10-16X3/4
- TOA 5, TAG YELLOW, SUMMARY 3, ROOF - ROOF DECK
(1500) S1 #10-16X3/4

ERECTOR NOTE:
FIELD CUT DECK AS REQUIRED FOR OPENINGS 4'X4' OR SMALLER, AT NO ADDITIONAL COST TO VULCRAFT.

APPROVER VERIFY:
PLEASE VERIFY IF THERE IS ANY ACOUSTICAL DECK REQUIRED FOR THIS JOB.

NO ACOUSTICAL DECK REQUIRED

APPROVER VERIFY:
PLEASE VERIFY THE CLOUDED DECK EDGES (DE) ARE CORRECT AS SHOWN. IF YES (1) NO THIS INFORMATION COULD NOT BE OBTAINED FROM THE CONTRACT DRAWINGS.

ERECTOR NOTE:
CUT DECK IN FIELD AS REQ'D AT ALL OPENINGS, SKEWED CUTS AND LENGTHWISE CUTS AT NO ADDITIONAL COST TO VULCRAFT
DENOTES START POINT OF DECK LAYOUT

APPROVER VERIFY:
PLEASE VERIFY THE CLOUDED DECK SECTIONS ARE CORRECT AS SHOWN. IF YES (1) NO THIS INFORMATION COULD NOT BE OBTAINED FROM THE CONTRACT DRAWINGS.

APPROVER NOTE:
VULCRAFT/VERCO DOES NOT REVISE JOIST OR DECK TYPES, SIZES, GAUGES, FINISHES, SUPPORT ATTACHMENTS, OR SUPPORT SPACING FOR U.L. DESIGNS, FM, OR OTHER BUILDING CODES WHICH HAVE BEEN INDICATED. IN ADDITION, SOME U.L. DESIGNS CONTAIN RESTRICTIONS ON PRODUCT MEMBER OR MATERIAL SIZES, BRIDGING SIZES, ETC. MAKE CERTAIN ALL PRODUCT SELECTIONS HAVE BEEN MADE ACCORDINGLY AND DENOTE ANY CHANGES.

The General Notes on Drawing C1 are a part of this drawing and must be referenced
****ONLY PROCEED WITH A COPY OF C1****

©Nucor Corporation, 2019. All rights reserved. This drawing may not be reproduced in whole or in part for any purpose without Nucor's prior written consent.