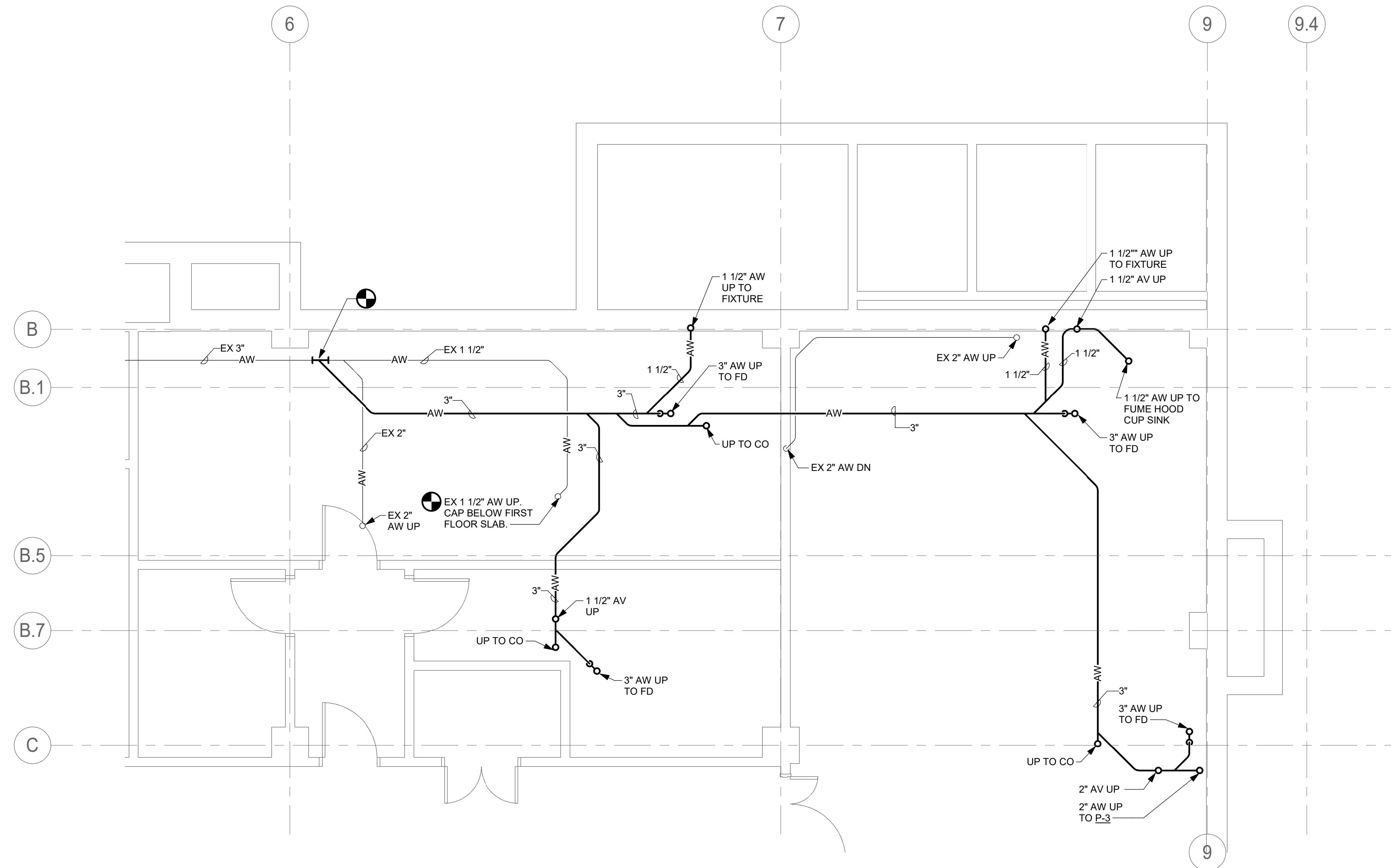


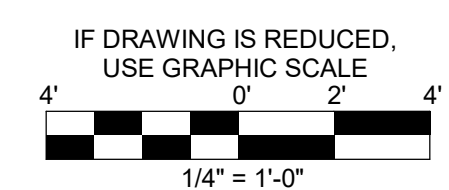


**DRAWING NOTES:**

- A. REFER TO DRAWING P-001 FOR SYMBOLS, ABBREVIATIONS, AND DRAWING CONVENTIONS.
- B. EXISTING CONDITIONS SHOWN ARE BASED ON LIMITED FIELD SURVEY AND EXISTING DOCUMENTATION. CONTRACTOR SHALL FIELD VERIFY ALL CONDITIONS, INDICATED OR OTHERWISE.
- C. PIPING ROUTED ABOVE CEILING UNLESS OTHERWISE NOTED.



1 BASEMENT PLAN - PLUMBING - NEW WORK  
P-100 1/4" = 1'-0"

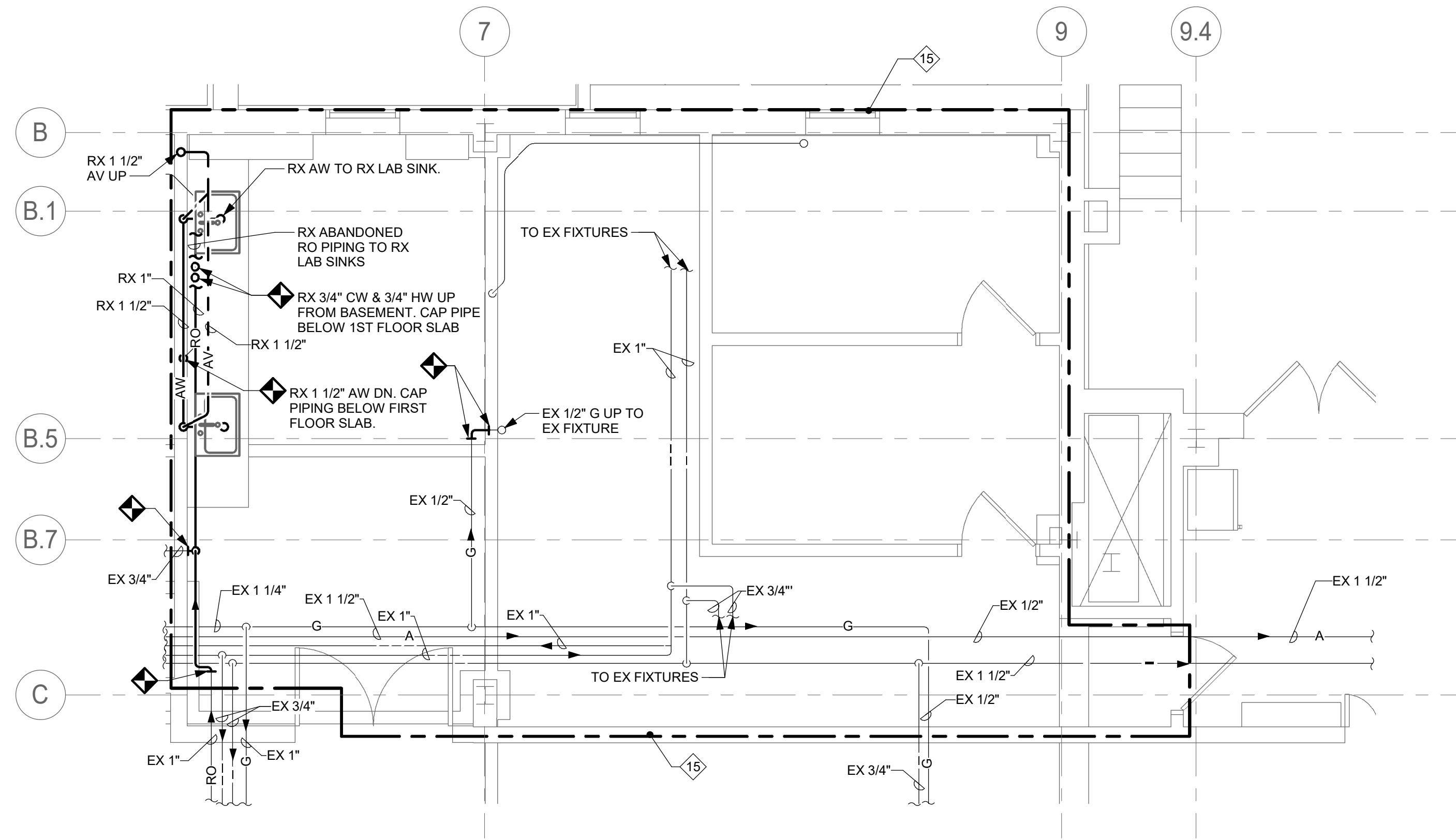


**DRAWING NOTES:**

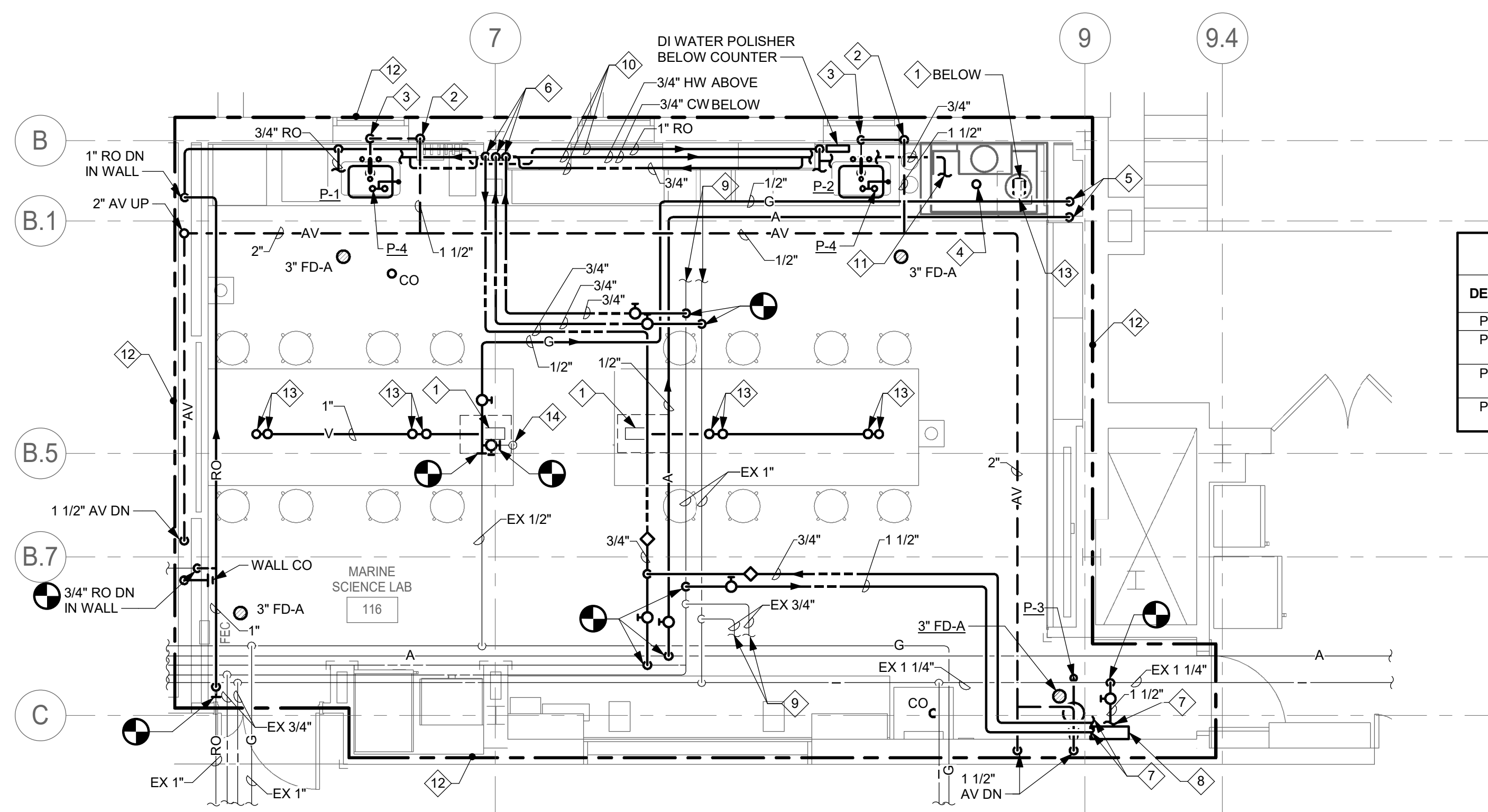
- A. REFER TO DRAWING P-001 FOR SYMBOLS, ABBREVIATIONS, AND DRAWING CONVENTIONS.
- B. EXISTING CONDITIONS SHOWN ARE BASED ON LIMITED FIELD SURVEY AND EXISTING DOCUMENTATION. CONTRACTOR SHALL FIELD VERIFY ALL CONDITIONS, INDICATED OR OTHERWISE.
- C. COORDINATE ALL DEMOLITION WORK WITH NEW WORK CONSTRUCTION.
- D. REMOVE ABANDONED HANGERS AND SUPPORTS FOR REMOVED DUCTWORK AND EQUIPMENT.
- E. PIPING ROUTED ABOVE CEILING UNLESS OTHERWISE NOTED.

**SPECIAL NOTES:**

- 1 POINT OF USE VACUUM PUMP FINISHED BY OWNER. INSTALLED WITHIN CABINET ENCLOSURE. REFER TO ARCHITECTURAL PLANS FOR ADDITIONAL INFORMATION.
- 2 1 1/2" AV DN. OFFSET BELOW WINDOW.
- 3 1 1/2" AV DN TO 1 1/2" AW BELOW SLAB.
- 4 1 1/2" AW UP TO CUP SINK DRAIN.
- 5 1/2" G AND 12" A DN TO FUME HOOD.
- 6 3/4" CW, 3/4" HW, AND 3/4" HWR DN IN WALL. ROUTE TO LAB SINKS IN CASE WORK.
- 7 1 1/2" CW, 1 1/2" HW, & 3/4" HWR TO MIXING VALVE SERVING EMERGENCY FIXTURE.
- 8 EMERGENCY SHOWER MIXING VALVE ASSEMBLY IN RECESSED CABINET IN WALL ADJACENT TO FIXTURE.
- 9 TO EX FIXTURES.
- 10 PIPING ROUTED IN CASEWORK.
- 11 3/4" CW TO FUME HOOD CUP SINK.
- 12 MODIFY EXISTING WET PIPE SPRINKLER SYSTEM WITHIN THIS AREA PER NFPA 13 AND IN ACCORDANCE WITH AUTHORITY HAVING JURISDICTION. REMOVE EXISTING SPRINKLER HEADS AND PIPING AS REQUIRED TO COORDINATE WITH NEW WORK. EXISTING SPRINKLER HEADS SHALL NOT BE REUSED.
- 13 3/4" V PIPE UP TO BENCH TOP NOZZELS. VACUUM PIPING ROUTED IN CASEWORK.
- 14 EX 1/2" G UP TO EX FIXTURES.
- 15 REMOVE ALL SPRINKLER HEADS AND BRANCH/OR PIPING IN THIS AREA. COORDINATE BRANCH REMOVAL WITH NEW WORK.



1 FIRST FLOOR - PLUMBING - DEMOLITION  
P-101 1/4" = 1'-0"



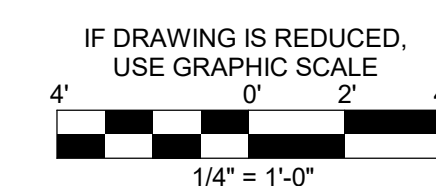
2 FIRST FLOOR - PLUMBING - NEW WORK  
P-101 1/4" = 1'-0"

**PLUMBING FIXTURE SCHEDULE**

DESIG	DESCRIPTION	FIXTURE UNITS		ROUGH-IN CONNECTION (IN)				REMARKS
		WASTE	WATER	SAN	VENT	CW	HW	
P-1	LABORATORY SINK	2	2	1 1/2"	1 1/2"	1/2"	1/2"	INCLUDES DECK MOUNTED EMERGENCY EYEWASH AND RO FAUCET
P-2	LABORATORY SINK	2	2	1 1/2"	1 1/2"	1/2"	1/2"	INCLUDES DECK MOUNTED EMERGENCY EYEWASH, RO FAUCET, AND DI FAUCET, BARRIER FREE
P-3	COMBINATION EMERGENCY SHOWER/EYEWASH	---	---	1 1/2"	1 1/2"	---	---	RECESSED WALL MOUNTED, BARRIER FREE, PROVIDE WITH HWMV-2 ON ADJACENT WALL.
P-4	EMERGENCY EYEWASH	---	---	---	---	---	---	DECK MOUNTED ADJACENT TO SINK, BARRIER FREE, PROVIDE WITH HWMV-1 UNDER SINK.

**HOT WATER MIXING VALVES SCHEDULE**

DESIG	LOCATION	SERVICE	GPM	HOT WATER TEMP. (°F)	MAX. PRESSURE DROP (PSI)	REMARKS
HWMV-1	EMERGENCY EYE/FACE WASH	TEPID WATER	3.0	85	10	ASSE 1071
HWMV-2	COMBINATION EMERGENCY SHOWER EYEWASH	TEPID WATER	25	85	10	ASSE 1071



**Marine Science Lab**

St. Mary's College  
19090 Mathias De Sousa Drive  
St. Mary's City, Maryland 20686