

USING AGENCY
APPROVAL

NAME _____
TITLE _____ DATE _____

DEPT. OF GENERAL
SERVICES APPROVAL

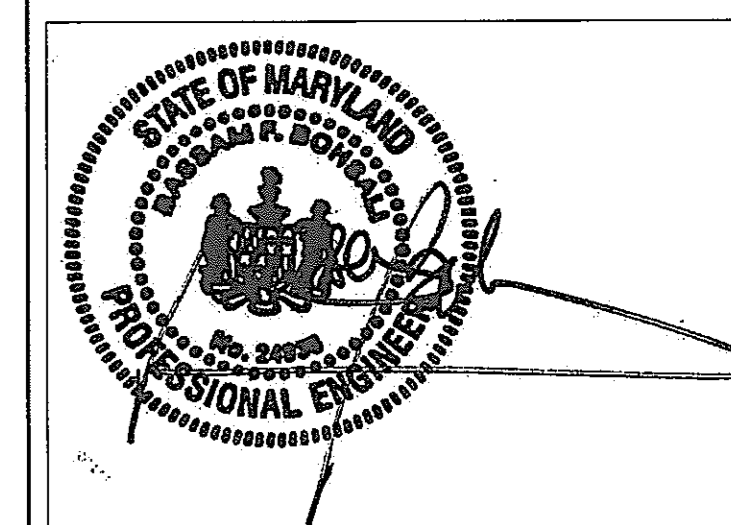
PROJECT MANAGER _____ DATE _____

CHIEF - PROJ. MGT. & DSGN. _____ DATE _____

Issued for _____ Rev Date _____

Issued for	Rev	Date

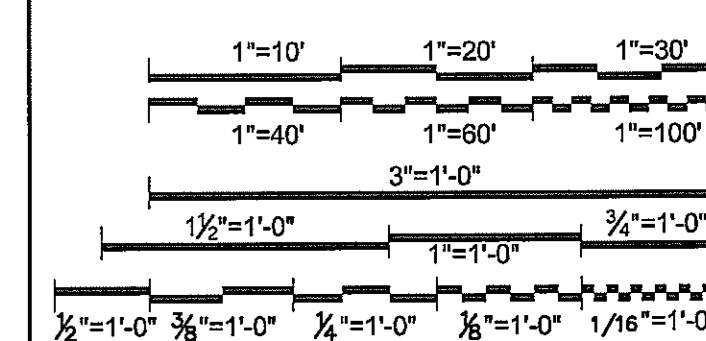
Seals and Signatures



01/05/05

Graphic Scales DATE

Project North



Drawing Title

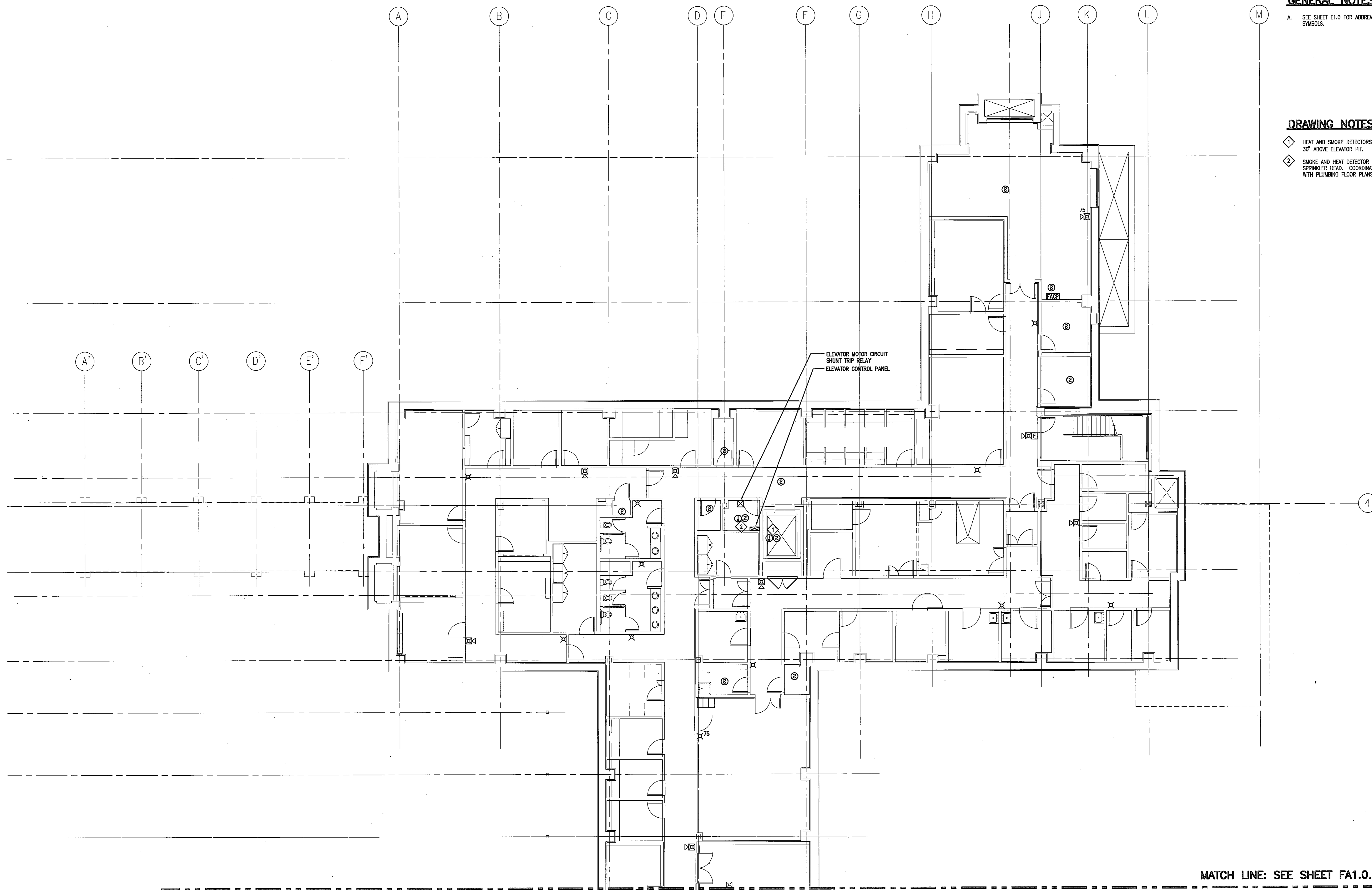
**FIRE ALARM PLAN
BASEMENT NORTH WING**

1/8" = 1'-0"

Scale
J-494-020-002 25379.000
DGS Project Number SG Project Number

FA1.0.A

Drawing Number



GENERAL NOTES

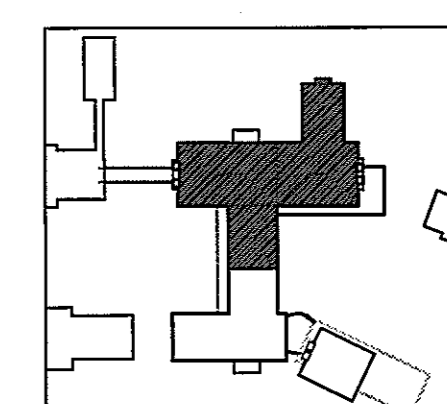
A SEE SHEET ET.0 FOR ABBREVIATIONS AND SYMBOLS.

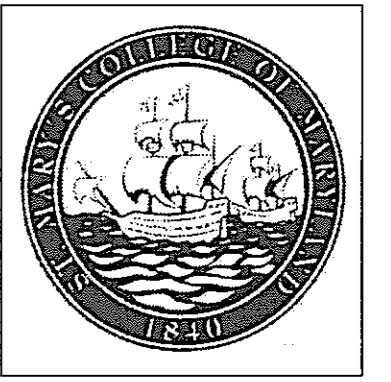
DRAWING NOTES

- ◆ HEAT AND SMOKE DETECTORS, WALL MOUNTED 30' ABOVE ELEVATOR PIT.
- ◆ SMOKE AND HEAT DETECTOR WITHIN 2' OF EACH SPRINKLER HEAD. COORDINATE EXACT QUANTITY WITH PLUMBING FLOOR PLANS.

**FIRE ALARM SYSTEM
BASEMENT NORTH WING**
SCALE: 1/8" = 1'-0"

MATCH LINE: SEE SHEET FA1.0.B





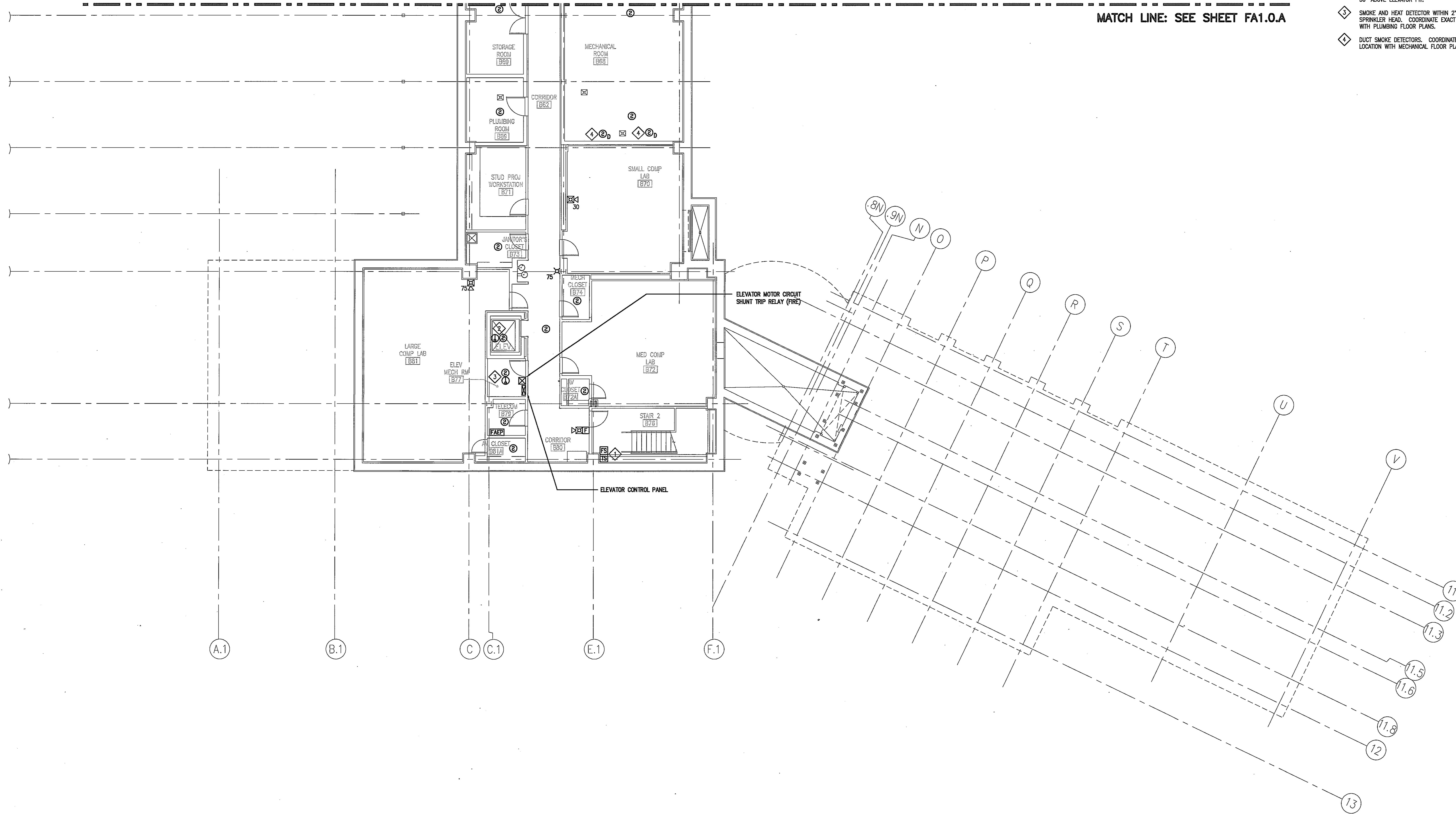
GENERAL NOTES

- A. SEE SHEET E1.0 FOR ABBREVIATIONS AND SYMBOLS.

DRAWING NOTES

- 1. COORDINATE EXACT LOCATION AND QUANTITY WITH MECH. DRAWINGS.
- 2. HEAT AND SMOKE DETECTORS, WALL MOUNTED 30" ABOVE ELEVATOR PIT.
- 3. SMOKE AND HEAT DETECTOR WITHIN 2' OF EACH SPRINKLER HEAD. COORDINATE EXACT QUANTITY WITH PLUMBING FLOOR PLANS.
- 4. DUCT SMOKE DETECTORS. COORDINATE EXACT LOCATION WITH MECHANICAL FLOOR PLANS.

MATCH LINE: SEE SHEET FA1.0.A



**FIRE ALARM SYSTEM
BASEMENT SOUTH WING**
SCALE: 1/8" = 1'-0"

USING AGENCY
APPROVAL

NAME _____ DATE _____
TITLE _____

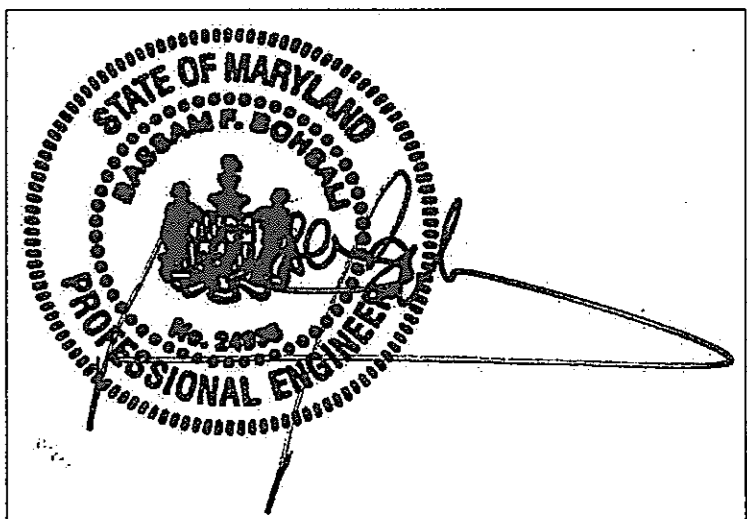
DEPT. OF GENERAL
SERVICES APPROVAL

PROJECT MANAGER _____ DATE _____

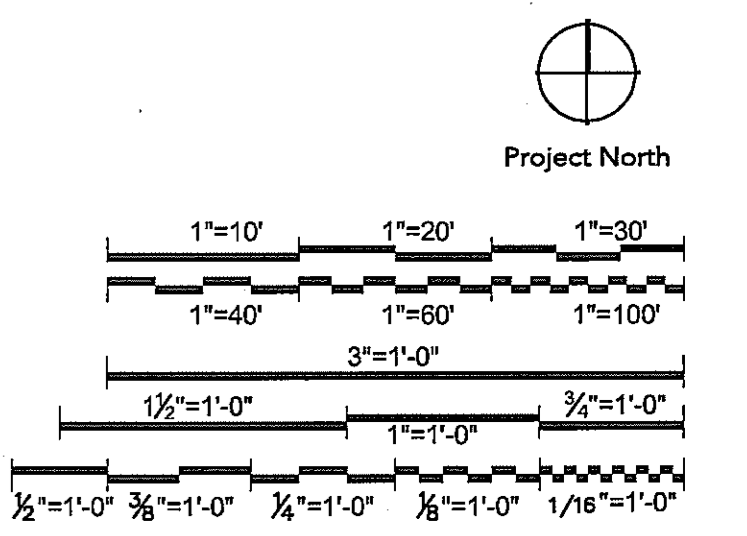
CHIEF - PROJ. MGT. & DSGN. _____ DATE _____

Issued for	Rev	Date

Seals and Signatures



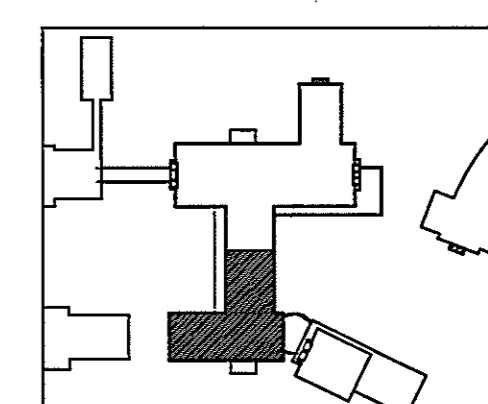
DATE: 01/05/05
DATE: _____

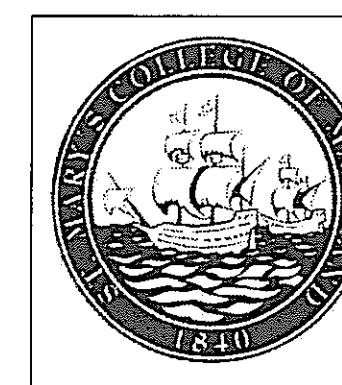


Drawing Title

**FIRE ALARM PLAN
BASEMENT SOUTH WING**

Scale: 1/8" = 1'-0"
J-494-020-002 25379.000
DGS Project Number SG Project Number
FA1.0.B
Drawing Number





GENERAL NOTES

A. SEE SHEET E1.0 FOR ABBREVIATIONS AND SYMBOLS.

USING AGENCY APPROVAL

NAME _____
TITLE _____ DATE _____

DEPT. OF GENERAL SERVICES APPROVAL

PROJECT MANAGER _____ DATE _____

CHIEF - PROJ. MGT. & DSGN. _____ DATE _____

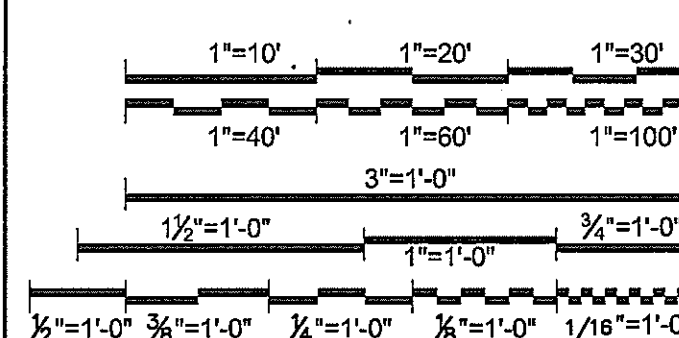
Issued for _____ Rev. Date _____

Issued for	Rev	Date

Seals and Signatures

01/05/05 DATE

Graphic Scales



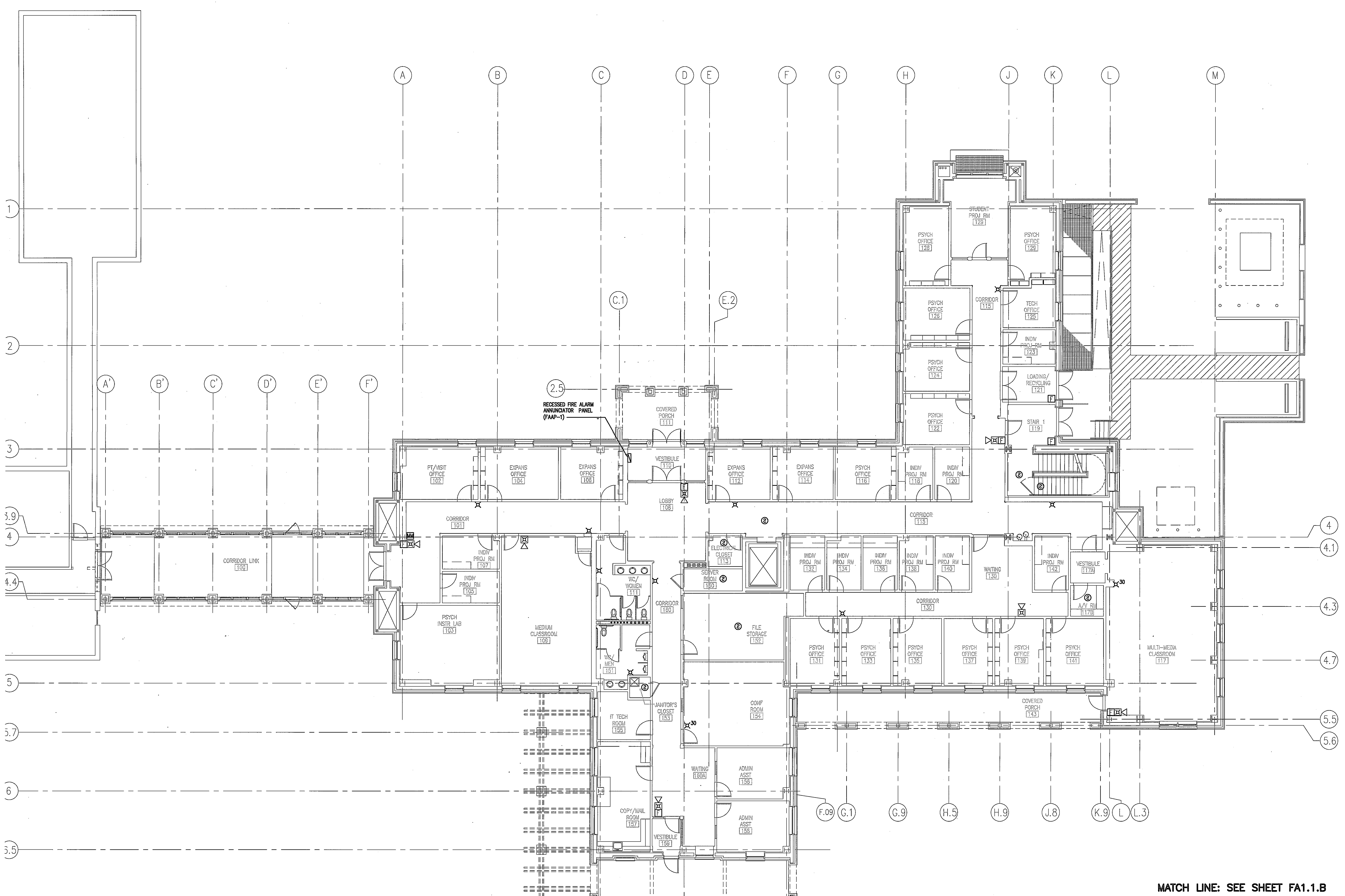
Drawing Title

**FIRE ALARM PLAN
FIRST FLOOR NORTH WING**

Scale 1/8"=1'-0"
J-494-020-002 25379.000
DGS Project Number SG Project Number

FA1.1.A

Drawing Number

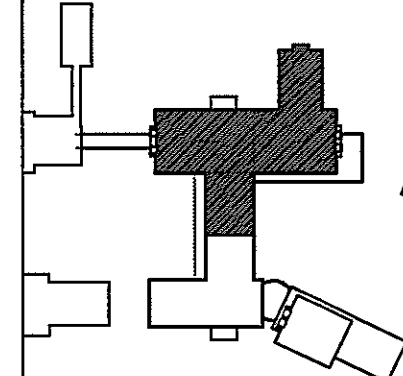


- 1
- 2
- 3
- 3.9
- 4
- 4.4
- 5
- 5.7
- 6
- 3.5

- A
- B
- C
- D
- E
- F
- G
- H
- J
- K
- L
- M
- A'
- B'
- C'
- D'
- E'
- F'
- C.1
- E.2
- 2.5
- 4
- 4.1
- 4.3
- 4.7
- 5.5
- 5.6
- F.09
- G.1
- G.9
- H.5
- H.9
- J.8
- K.9
- L
- L.3

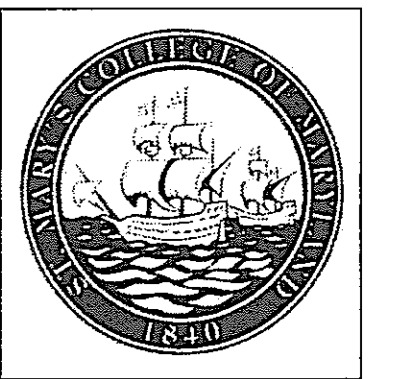
**FIRE ALARM SYSTEM
FIRST FLOOR NORTH WING**
SCALE: 1/8"=1'-0"

MATCH LINE: SEE SHEET FA1.1.B



St. Mary's
College of Maryland
St. Mary's City, MD

New
Academic
Building



SmithGroup

SmithGroup Incorporated
1825 Eye Street NW
Suite 250
Washington, DC 20006
E: 202.842.2100
F: 202.574.4500
www.smithgroup.com

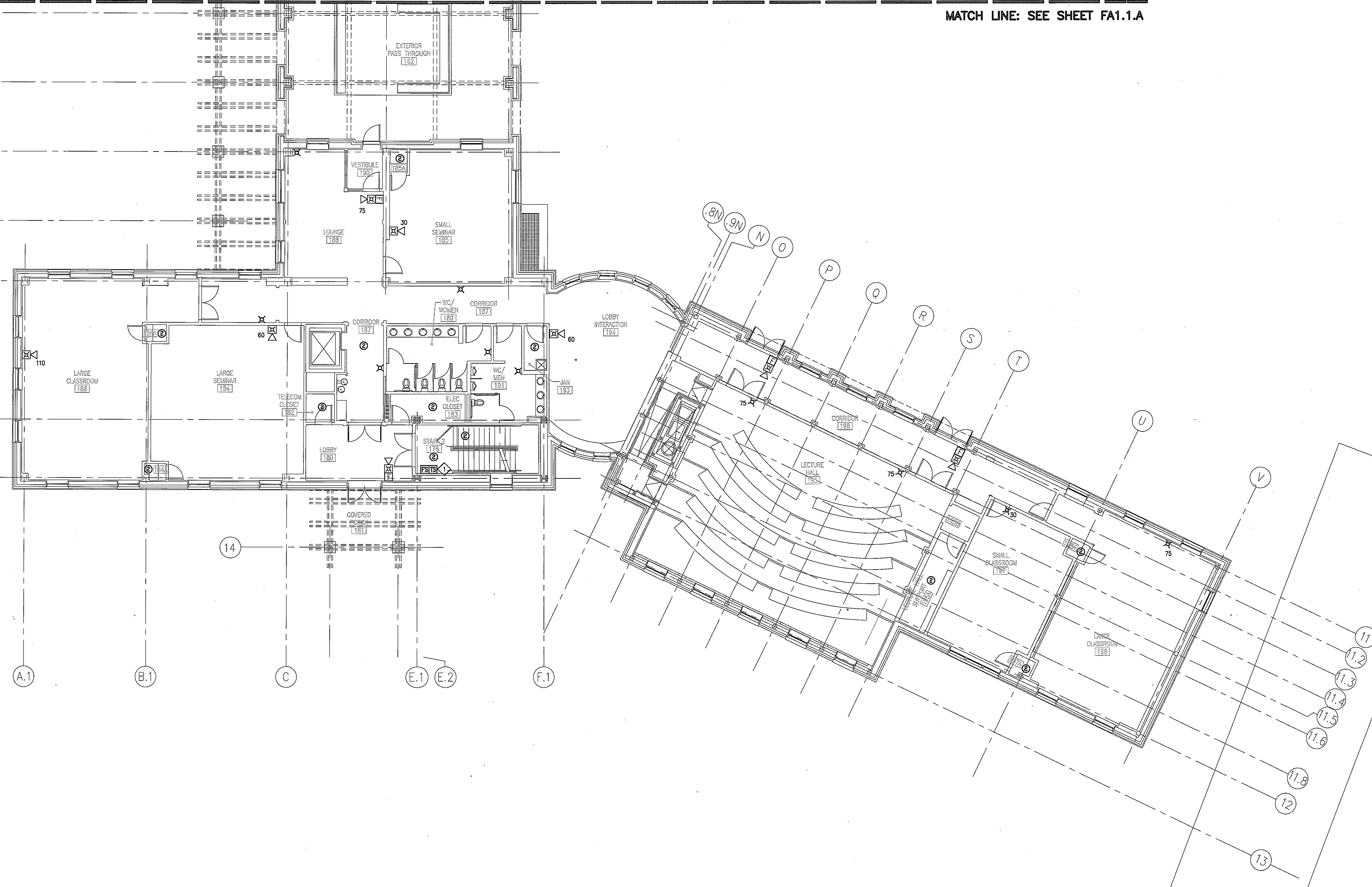
GENERAL NOTES

A. SEE SHEET E1.0 FOR ABBREVIATIONS AND SYMBOLS.

DRAWING NOTES

◇ COORDINATE EXACT LOCATION AND QUANTITY WITH MECH. DRAWINGS.

MATCH LINE: SEE SHEET FA1.1.A



**FIRE ALARM SYSTEM
FIRST FLOOR SOUTH WING**
SCALE: 1/8" = 1'-0"

USING AGENCY
APPROVAL

NAME _____
TITLE _____ DATE _____

DEPT. OF GENERAL
SERVICES APPROVAL

PROJECT MANAGER _____ DATE _____

CHIEF - PROJ. MGT. & DSGN. _____ DATE _____

Issued for _____ Rev. Date _____

Issued for	Rev.	Date

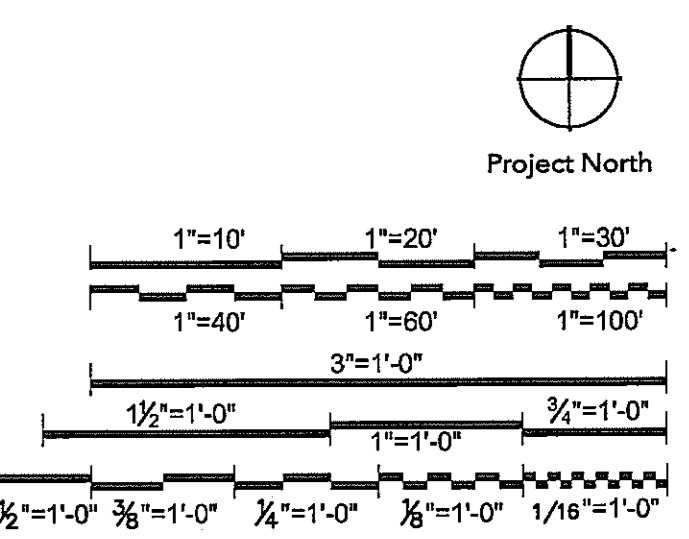
Seals and Signatures



01/05/05

DATE

Graphic Scales



Drawing Title

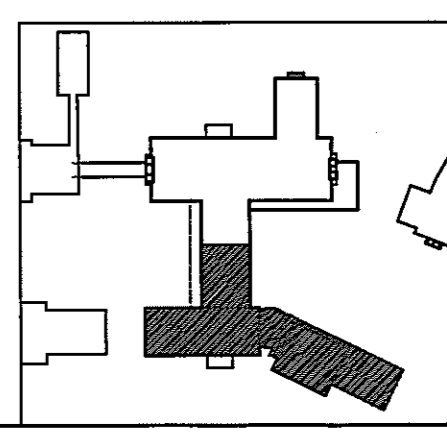
**FIRE ALARM PLAN
FIRST FLOOR SOUTH WING**

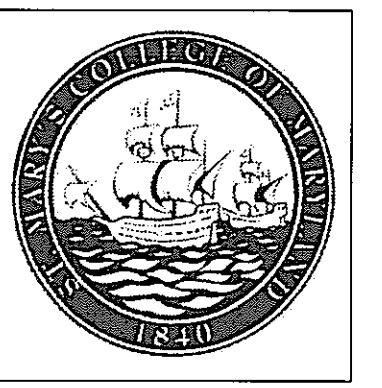
1/8" = 1'-0"

Scale
J-494-020-002 25379.000
DGS Project Number SG Project Number

FA1.1.B

Drawing Number





SmithGroup

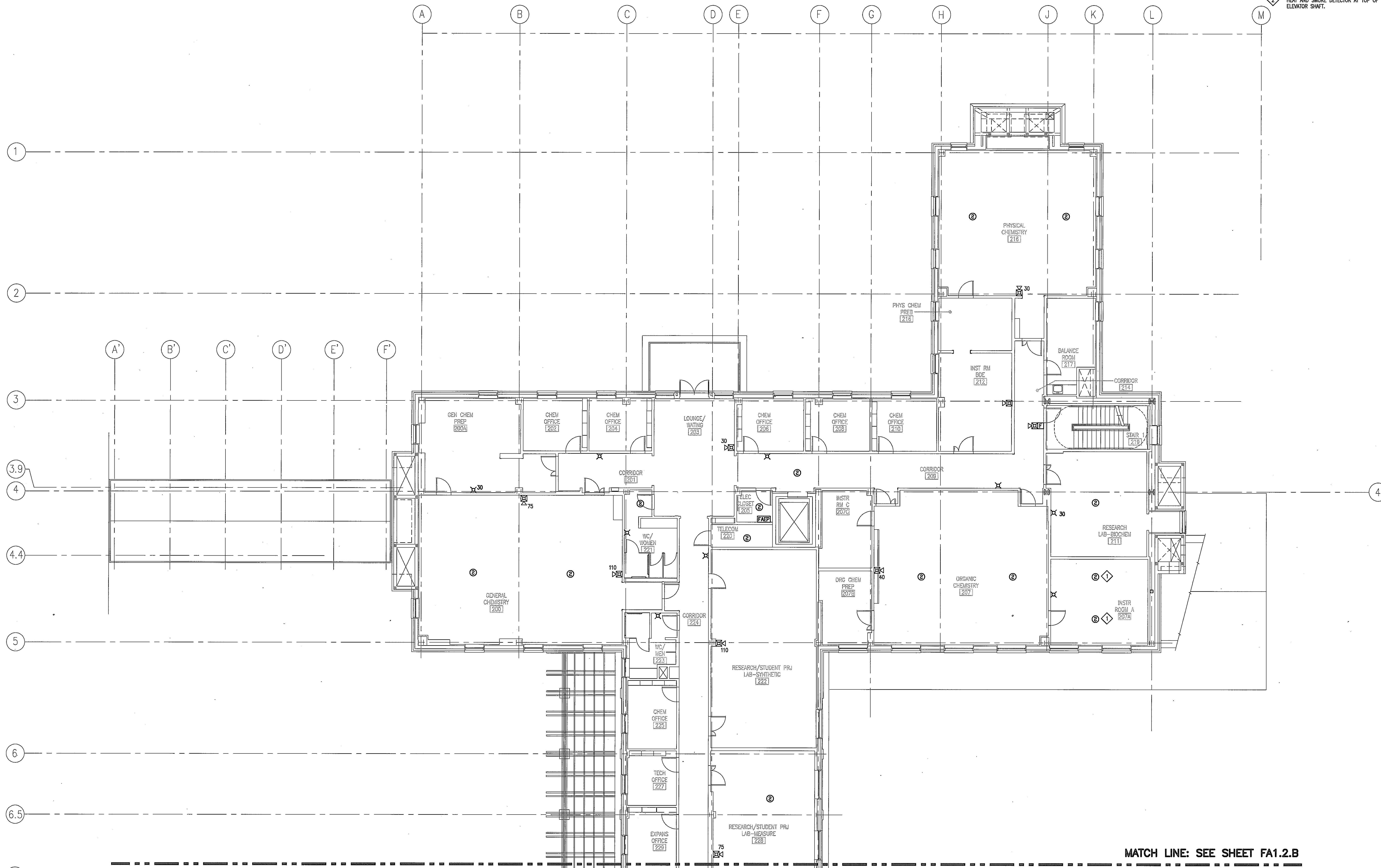
SmithGroup Incorporated
1825 Eye Street NW
Suite 250
Washington, DC 20006
E 202.842.2100
F 202.974.4500
www.smithgroup.com

GENERAL NOTES

A. SEE SHEET E1.0 FOR ABBREVIATIONS AND SYMBOLS.

DRAWING NOTES

TO PACP IN MECHANICAL PENTHOUSE,
HEAT AND SMOKE DETECTOR AT TOP OF
ELEVATOR SHAFT.



**FIRE ALARM SYSTEM
SECOND FLOOR NORTH WING**
SCALE: 1/8"=1'-0"

USING AGENCY
APPROVAL

NAME _____
TITLE _____ DATE _____

DEPT. OF GENERAL
SERVICES APPROVAL

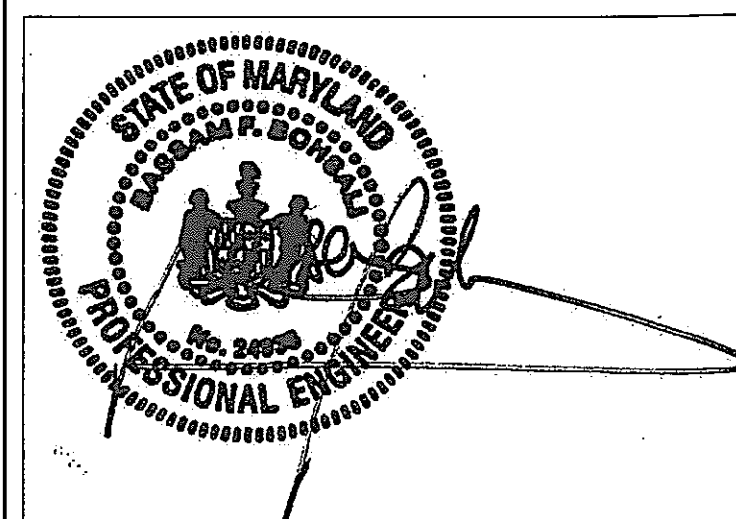
PROJECT MANAGER _____ DATE _____

CHIEF - PROJ. MGT. & DSGN. _____ DATE _____

Issued for _____ Rev _____ Date _____

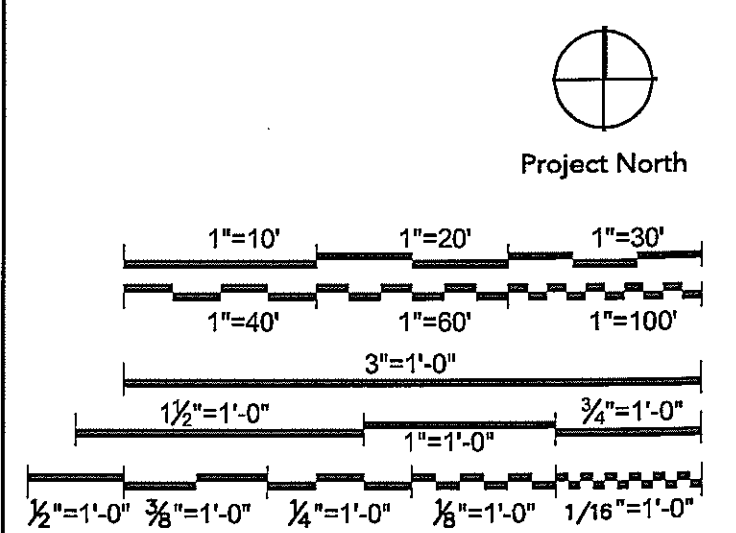
Issued for	Rev	Date

Seals and Signatures



01/05/05
DATE

Graphic Scales



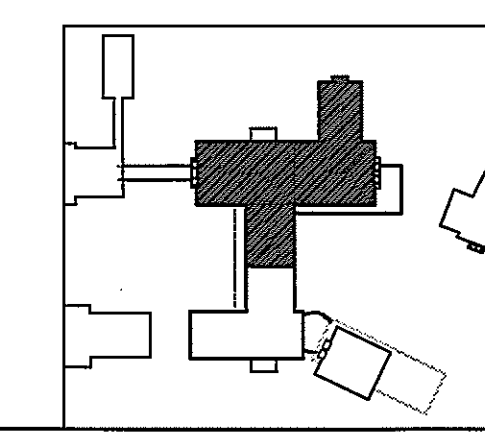
Drawing Title
**FIRE ALARM PLAN
SECOND FLOOR
NORTH WING**

1/8"=1'-0"

Scale
J-494-020-002 25379.000
DGS Project Number SG Project Number

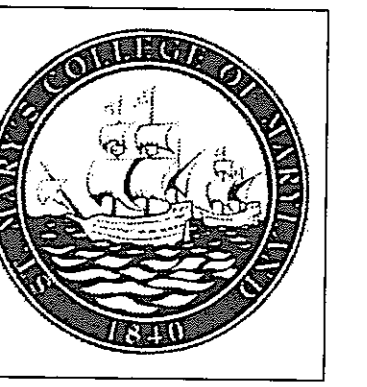
FA1.2.A

Drawing Number



St. Mary's
College of Maryland
St. Mary's City, MD

New
Academic
Building



SmithGroup

SmithGroup Incorporated
1825 Eye Street NW
Suite 250
Washington, DC 20006
E 202.842.2100
F 202.874.4500
www.smithgroup.com

USING AGENCY
APPROVAL

NAME
TITLE DATE

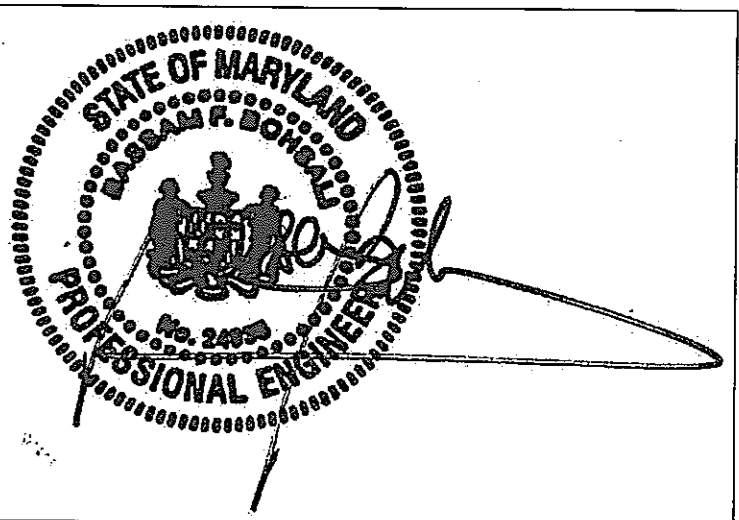
DEPT. OF GENERAL
SERVICES APPROVAL

PROJECT MANAGER DATE

CHIEF - PROJ. MGT. & DSGN. DATE

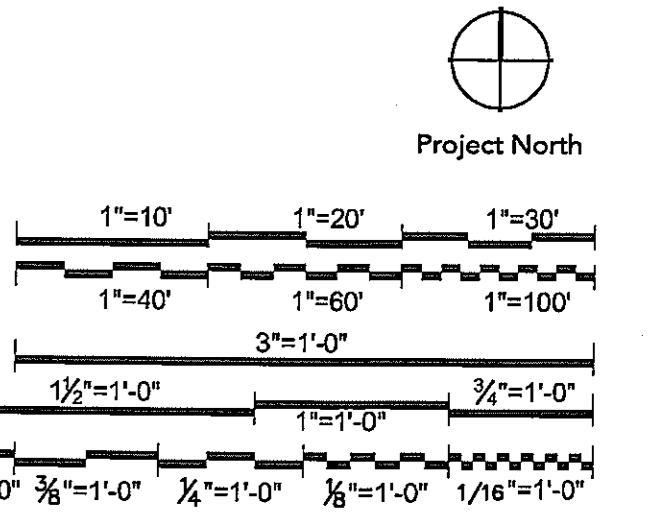
Issued for	Rev	Date

Seals and Signatures



01/05/05

Graphic Scales DATE



Drawing Title

**FIRE ALARM PLAN
SECOND FLOOR
SOUTH WING**

1/8" = 1'-0"

Scale
J-494-020-002 25379.000
DGS Project Number SG Project Number

FA1.2.B

Drawing Number

GENERAL NOTES

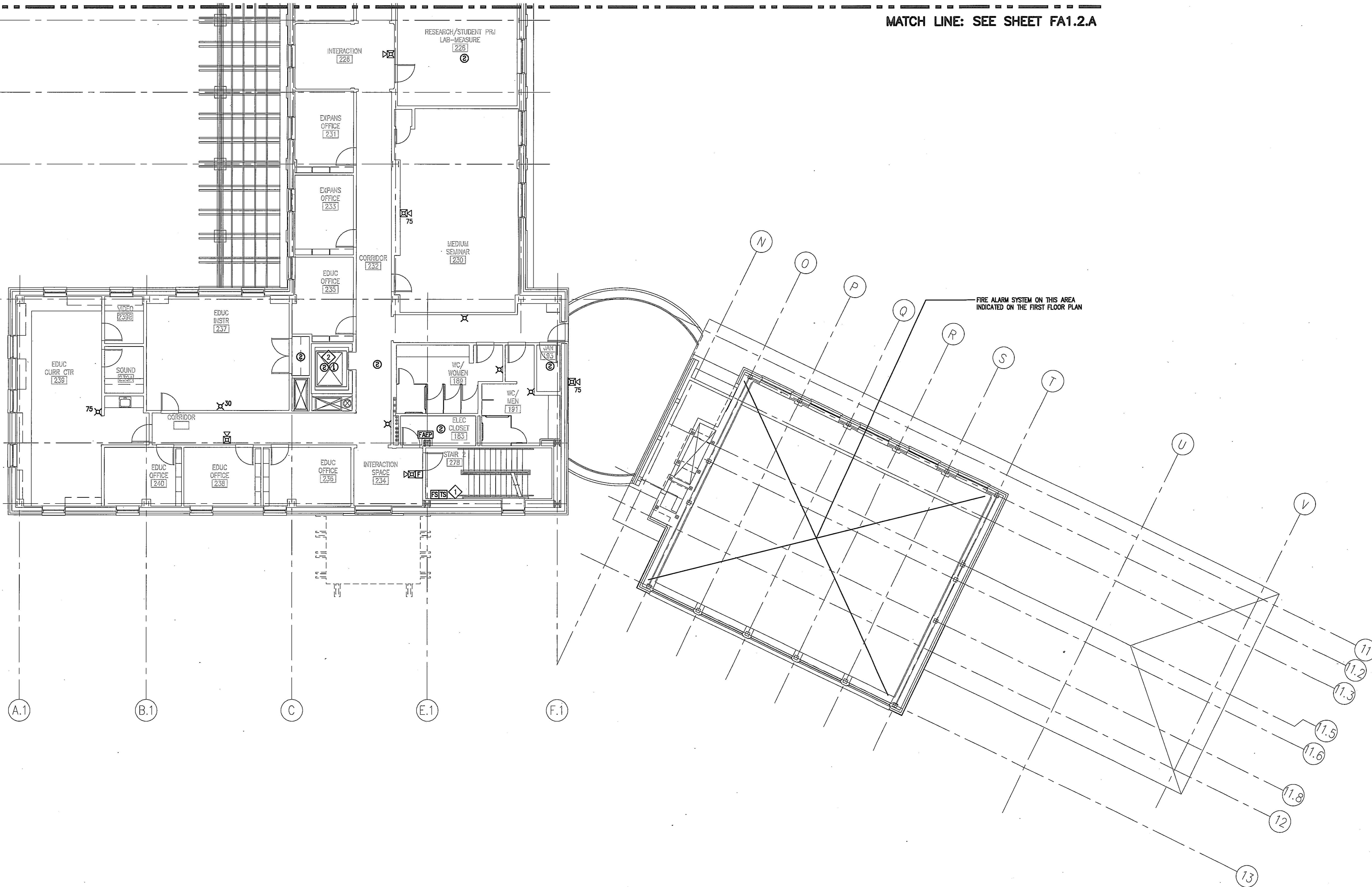
A. SEE SHEET E1.0 FOR ABBREVIATIONS AND SYMBOLS.

DRAWING NOTES

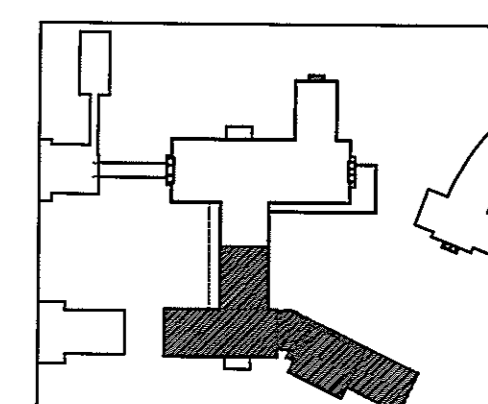
- 1. COORDINATE EXACT LOCATION AND QUANTITY WITH MECH. DRAWINGS.
- 2. HEAT AND SMOKE DETECTOR AT TOP OF ELEVATOR SHAFT.

MATCH LINE: SEE SHEET FA1.2.A

FIRE ALARM SYSTEM ON THIS AREA INDICATED ON THE FIRST FLOOR PLAN



**FIRE ALARM SYSTEM
SECOND FLOOR SOUTH WING**
SCALE: 1/8" = 1'-0"





SmithGroup

SmithGroup Incorporated
1825 Eye Street NW
Suite 250
Washington, DC 20006
E 202.842.2100
E 202.874.4500
www.smithgroup.com

GENERAL NOTES

A. SEE SHEET E1.0 FOR ABBREVIATIONS AND SYMBOLS.

DRAWING NOTES

① TO SMOKE DETECTORS IN LAB INSTR ROOM A 207A ON SECOND FLOOR.
② CEILING MOUNTED FIRE ALARM DEVICE MOUNTED ON SLOPED CEILING. COORDINATE EXACT LOCATIONS WITH FINAL MECHANICAL EQUIPMENT LAYOUT.

USING AGENCY
APPROVAL

NAME _____
TITLE _____ DATE _____

DEPT. OF GENERAL
SERVICES APPROVAL

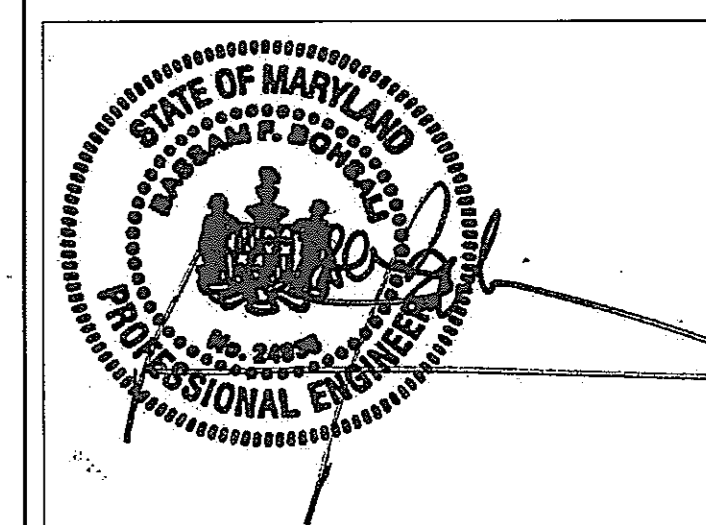
PROJECT MANAGER _____ DATE _____

CHIEF - PROJ. MGT. & DSGN _____ DATE _____

Issued for _____ Rev _____ Date _____

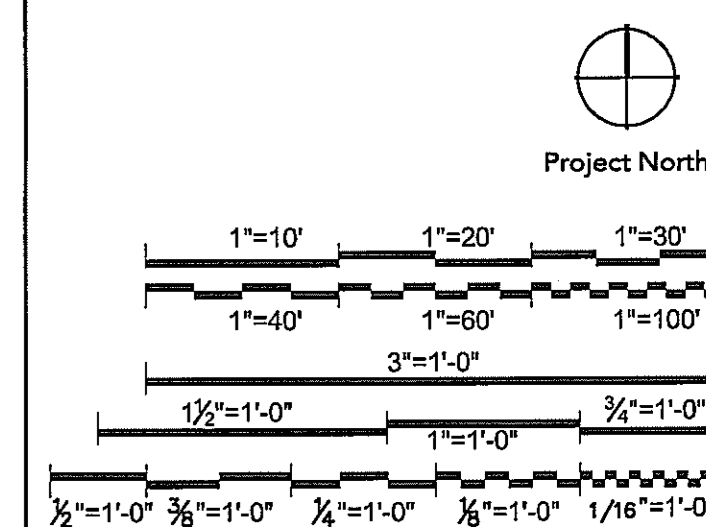
Issued for	Rev	Date

Seals and Signatures



01/05/05

DATE _____



Drawing Title _____

FIRE ALARM PLAN
PENTHOUSE NORTH WING

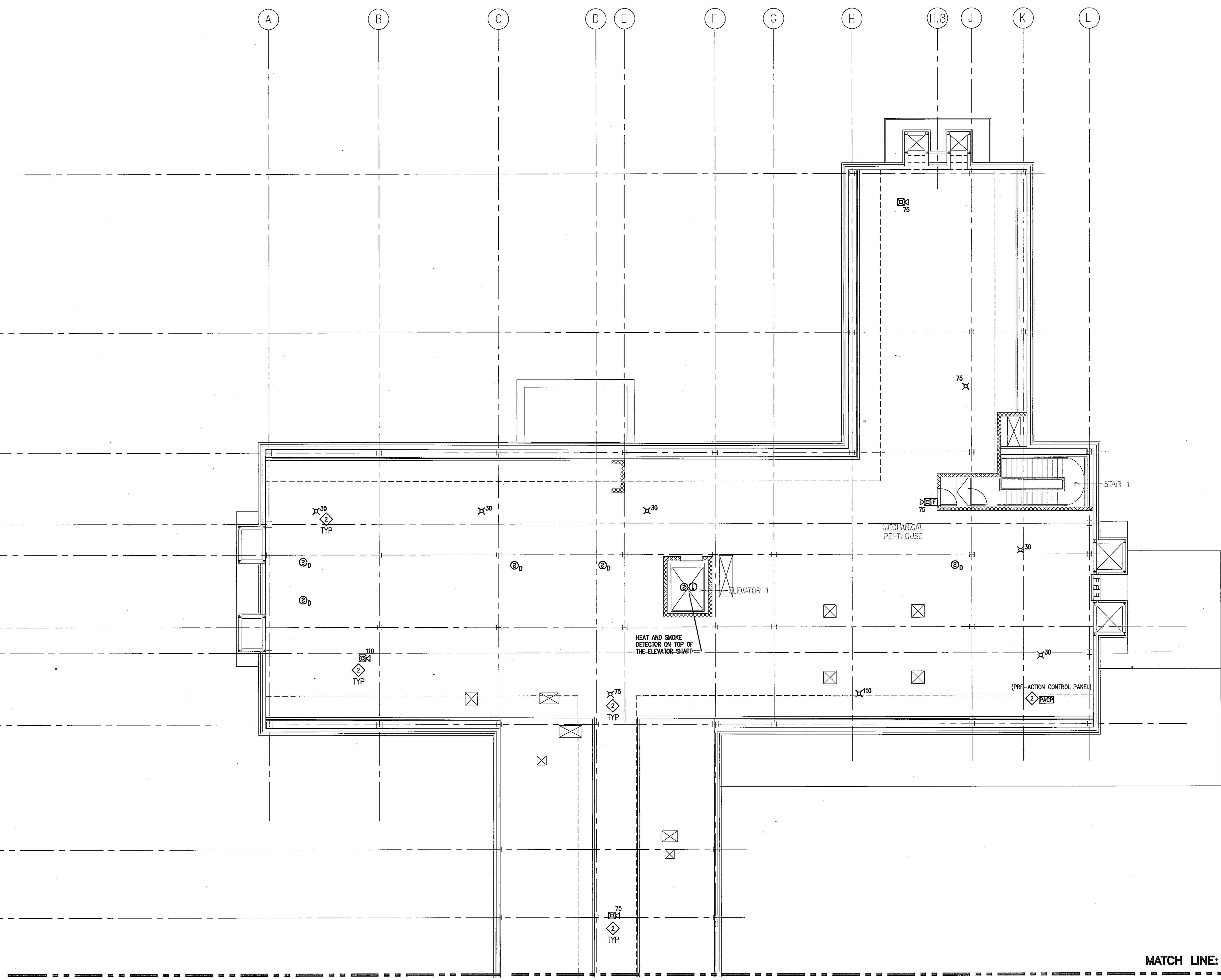
1/8" = 1'-0"

Scale

J-494-020-002 25379.000
DGS Project Number SG Project Number

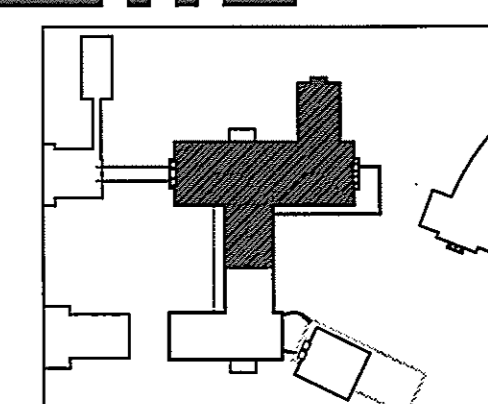
FA1.3.A

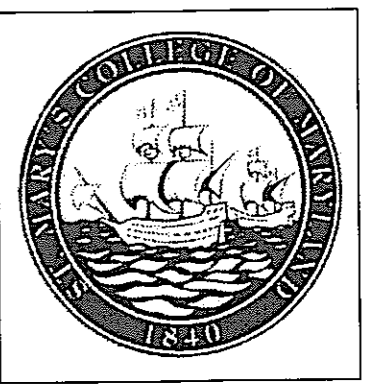
Drawing Number _____



MATCH LINE: SEE SHEET FA1.3.B

FIRE ALARM SYSTEM PLAN
PENTHOUSE NORTH WING
SCALE: 1/8" = 1'-0"





SmithGroup

SmithGroup Incorporated
1823 Eye Street NW
Suite 250
Washington, DC 20006
P 202.842.2100
F 202.574.4500
www.smithgroup.com

USING AGENCY APPROVAL

NAME _____
TITLE _____ DATE _____

DEPT. OF GENERAL SERVICES APPROVAL

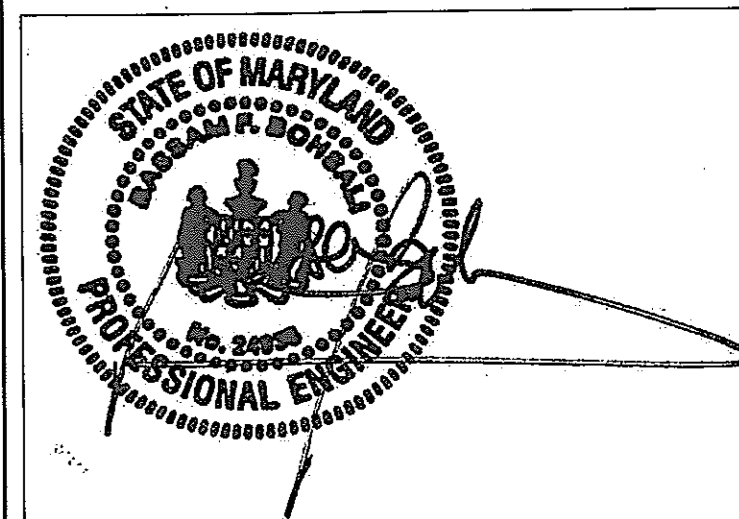
PROJECT MANAGER _____ DATE _____

CHIEF - PROJ. MGT. & DSGN _____ DATE _____

Issued for _____ Rev Date _____

Issued for	Rev Date

Seals and Signatures



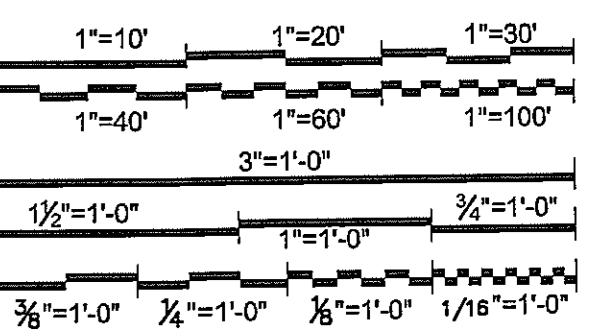
01/05/05

DATE _____

Graphic Scales

Project North

Project North



Drawing Title

FIRE ALARM PLAN
PENTHOUSE SOUTH WING

Scale 1/8" = 1'-0"

J-494-020-002 25379.000
DGS Project Number SG Project Number

FA13.B

Drawing Number

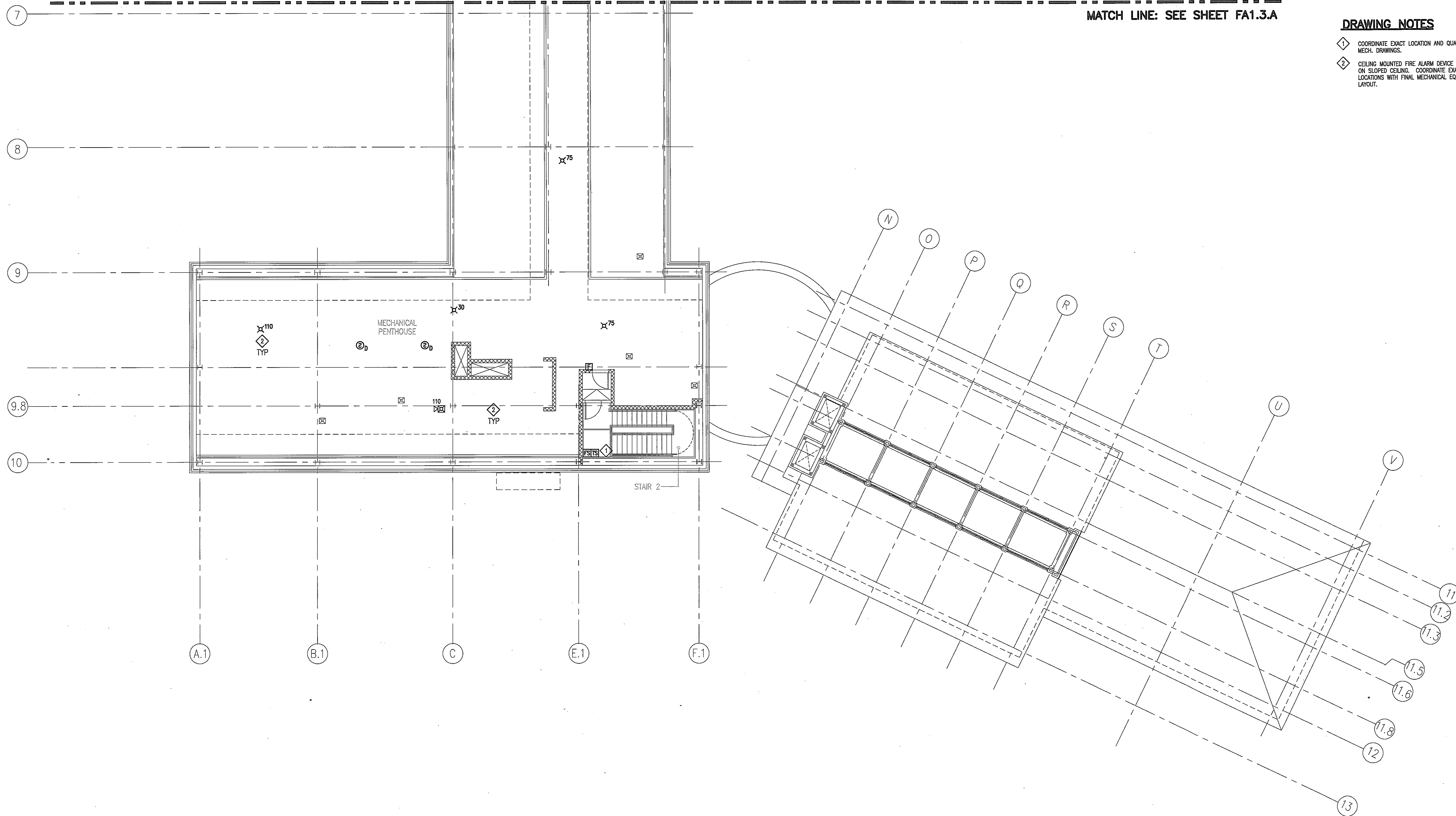
GENERAL NOTES

A. SEE SHEET E1.0 FOR ABBREVIATIONS AND SYMBOLS.

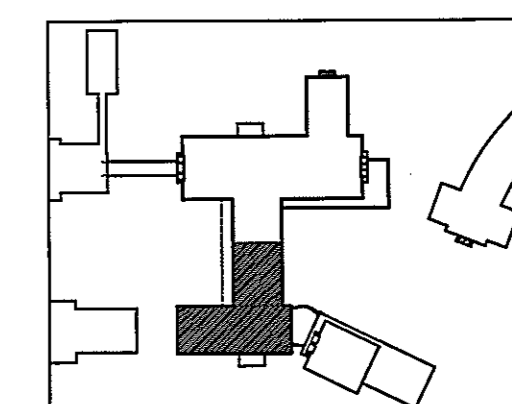
DRAWING NOTES

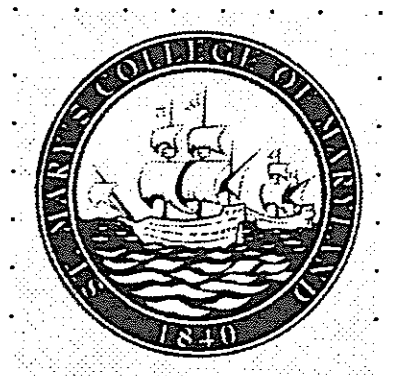
- COORDINATE EXACT LOCATION AND QUANTITY WITH MECH. DRAWINGS.
- CEILING MOUNTED FIRE ALARM DEVICE MOUNTED ON SLOPED CEILING. COORDINATE EXACT LOCATIONS WITH FINAL MECHANICAL EQUIPMENT LAYOUT.

MATCH LINE: SEE SHEET FA1.3.A



FIRE ALARM SYSTEM PLAN
PENTHOUSE SOUTH WING
SCALE: 1/8" = 1'-0"





SmithGroup
SmithGroup Incorporated
1825 Eye Street, NW
Suite 250
Washington, DC 20006
P 202.242.2100
F 202.274.4500
www.smithgroup.com

USING AGENCY APPROVAL

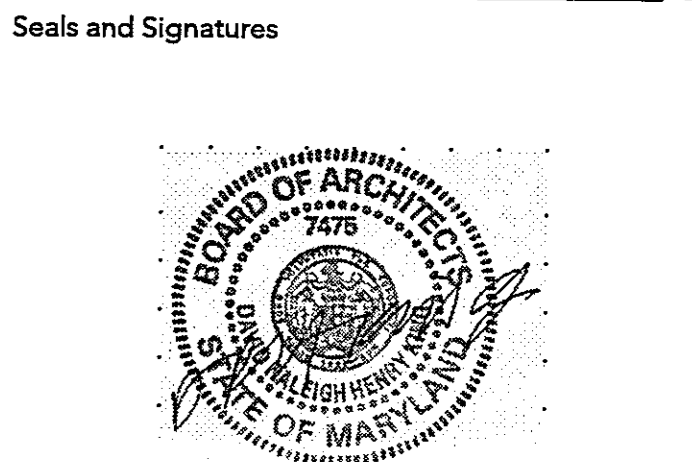
NAME _____
TITLE _____ DATE _____

DEPT. OF GENERAL SERVICES APPROVAL

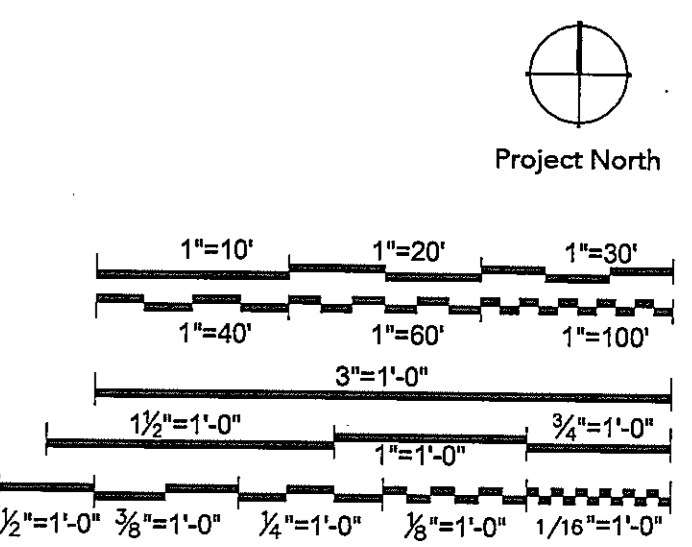
PROJECT MANAGER _____ DATE _____

CHIEF - PROJ. MGT. & DSGN. _____ DATE _____

Issued for _____ Rev _____ Date _____



01/05/05
DATE



Drawing Title
LIFE SAFETY PLAN FIRST FLOOR AND BASEMENT
AS SHOWN
Scale
J-494-020-002 25379.000
DGS Project Number SG Project Number
G1.01
Drawing Number

Max. Occupancy Basement			
Egress Component	Area	Occupancy Ratio	Total Occupants
Basement Floor Area	16,541		
General Classroom / Meeting Rooms / Psych. Testing Rm's / Interaction Spaces / Waiting	1,897	1 per 20 nsf	95
Instructional Class Laboratories	2,574	1 per 50 nsf	51
Mechanical / Electrical Spaces	2,198	1 per 300 nsf	7
Remainder of Floor including Research Laboratories	9,874	1 per 100 gsf	99
Totals			252

Egress Capacity Summary Basement Floor				
	Door Clear Width (inches)	Stair Width (inches)	Required Capacity (persons)	Available Capacity (persons) (1), (2)
Stair 1	32	48	126	160
Stair 2	32	48	126	160
Totals			252	320

1) EGRESS CAPACITY BASED ON .3 INCHES PER OCCUPANT FOR STAIRWAYS.
2) EGRESS CAPACITY BASED ON .2 INCHES PER OCCUPANT FOR OTHER EGRESS COMPONENTS.

Max. Occupancy 1st Floor (by Code)			
Egress Component	Area	Occupancy Ratio	Total Occupants
First Floor Area North Wing	12,478		
General Classroom North Wing and Interaction Spaces	2,201	1 per 20 nsf	110
Conference Rooms - North	771	1 per 15 nsf	51
Remainder of Floor including Open Labs / Research Labs / Support Labs - North Wing	9,506	1 per 100 gsf	95
First Floor Area South Wing	9,591		
General Classroom South Wing	6,389	1 per 20 nsf	319
Instructional Class Laboratories / Interaction Spaces - South	586	1 per 20 nsf	29
Remainder of Floor including Open Labs / Research Labs / Support Labs - South Wing	2,616	1 per 100 gsf	26
Totals			454

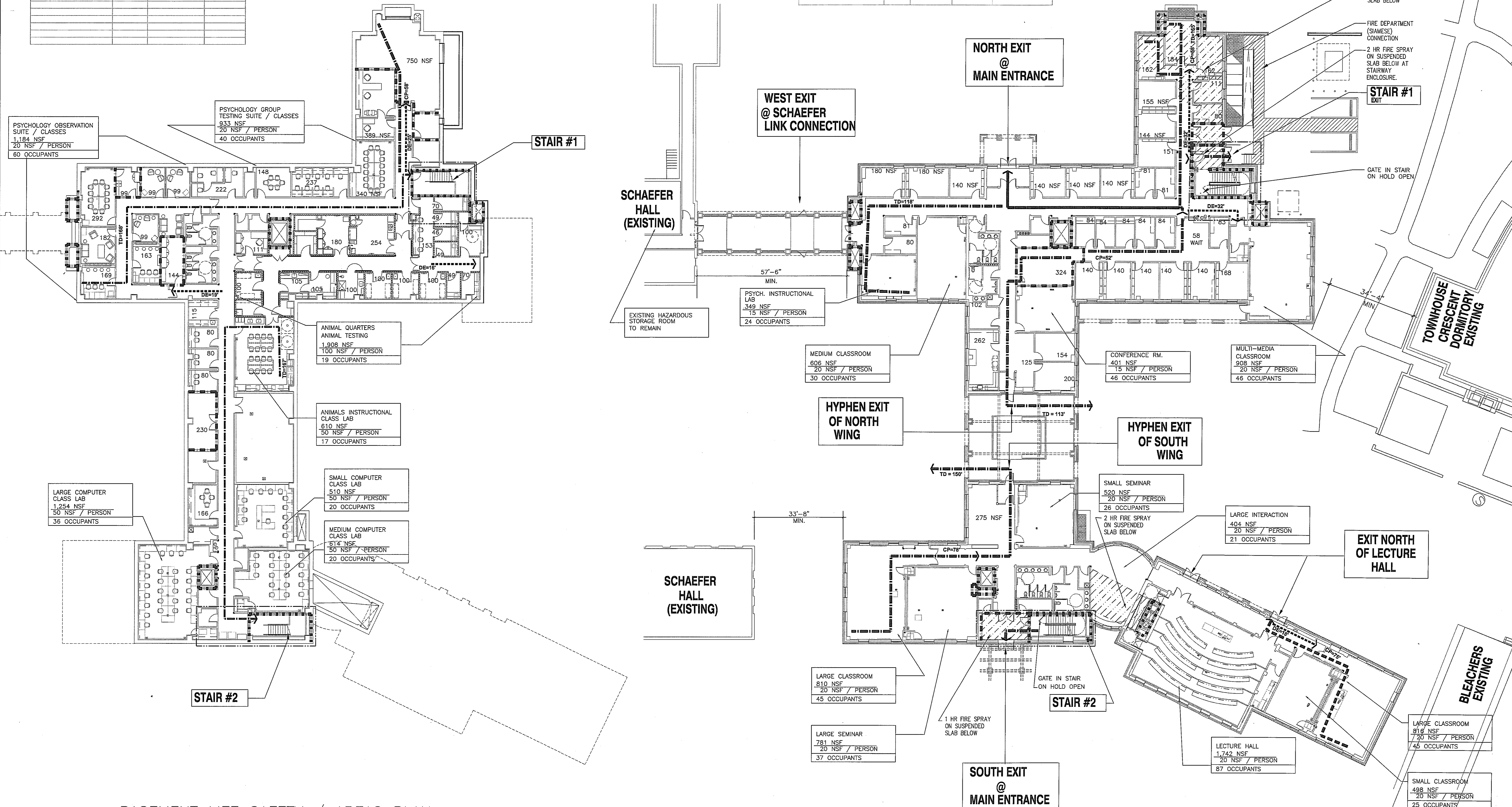
1) EGRESS CAPACITY BASED ON .3 INCHES PER OCCUPANT FOR STAIRWAYS.
2) EGRESS CAPACITY BASED ON .2 INCHES PER OCCUPANT FOR OTHER EGRESS

Egress Capacity Summary First Floor				
Exit	Door Clear Width (inches)	Required Capacity (persons) First Floor	Available Capacity (persons) (1,2)	
Exits - North Wing				
North (Main Entrance) Exit	66	66	330	
West (Schaefer Connection) Exit	66	66	330	
Hyphen Exit	32	66	160	
Totals - North Wing		257	820	
Exits - South Wing				
South Building Entrance	66	277	50	330
Exit North of Lecture Hall	66	137	330	
Exit North of Lecture Hall	66	137	330	
Hyphen Exit	32	50	160	
Totals - South Wing		277	375	1,160

1) EGRESS CAPACITY BASED ON .3 INCHES PER OCCUPANT FOR STAIRWAYS.
2) EGRESS CAPACITY BASED ON .2 INCHES PER OCCUPANT FOR OTHER EGRESS

First Floor Exit - @ Egress Convergence @ Stairs 1 and 2				
Exit Door Clear Width (inches)	Required Capacity (persons) from Floor Below	Required Capacity (persons) from Floor Above	Required Capacity (persons)	Available Capacity (persons) (2)
Stair 1	66	126	278	330
Stair 2	66	126	278	330
Totals			556	660

1) EGRESS CAPACITY BASED ON .3 INCHES PER OCCUPANT FOR STAIRWAYS.
2) EGRESS CAPACITY BASED ON .2 INCHES PER OCCUPANT FOR OTHER EGRESS



2
G101
BASEMENT LIFE SAFETY / AREAS PLAN
1/16" = 1'-0"
GROSS AREA = 16,986 SQ.FT.
NET AREA = 7,976 SQ.FT.

2
G101
FIRST FLOOR LIFE SAFETY / AREAS PLAN
1/16" = 1'-0"
GROSS AREA = 22,584 SQ.FT.
NET AREA = 13,104 SQ.FT.

LIFE SAFETY PLAN LEGEND

- TO = → TRAVEL DISTANCE (MAX. DISTANCE = 300')
- CP = → COMMON PATH OF TRAVEL (MAX. DISTANCE = 100')
- DE = → DEAD END CORRIDOR (MAX. DISTANCE = 50')
- 1 HR RATED WALL
- 2 HR RATED WALL
- ROOM NAME 000
- ROOM AREA IN NET SQUARE FEET
- AREA OF RATED FLOOR SLAB: 1 HR FIRE RATING (UL D743)
- AREA OF RATED FLOOR SLAB: 2 HR FIRE RATING (UL D743)

2 HR FIRE SPRAY BEAMS AND COLUMNS SUPPORTING STAIR (UL N708; BEAMS, UL X700 COLUMNS). SEE STRUCTURAL.

Max. Occupancy 2nd Floor			
Egress Component	Area	Occupancy Ratio	Total Occupants
Second Floor Area	17,349		
General Classroom and Interaction Spaces	1,428	1 per 20 nsf	71
Instructional Class Laboratories	4,026	1 per 50 nsf	81
Open Labs / Research Labs / Support Labs / Instrument Rooms	3,675	1 per 100 gsf	37
Mechanical /Electrical Spaces	145	1 per 300 nsf	0
Remainder of Floor	8,075	1 per 100 gsf	81
Exterior Balconies	677	1 per 20 nsf	34
			304

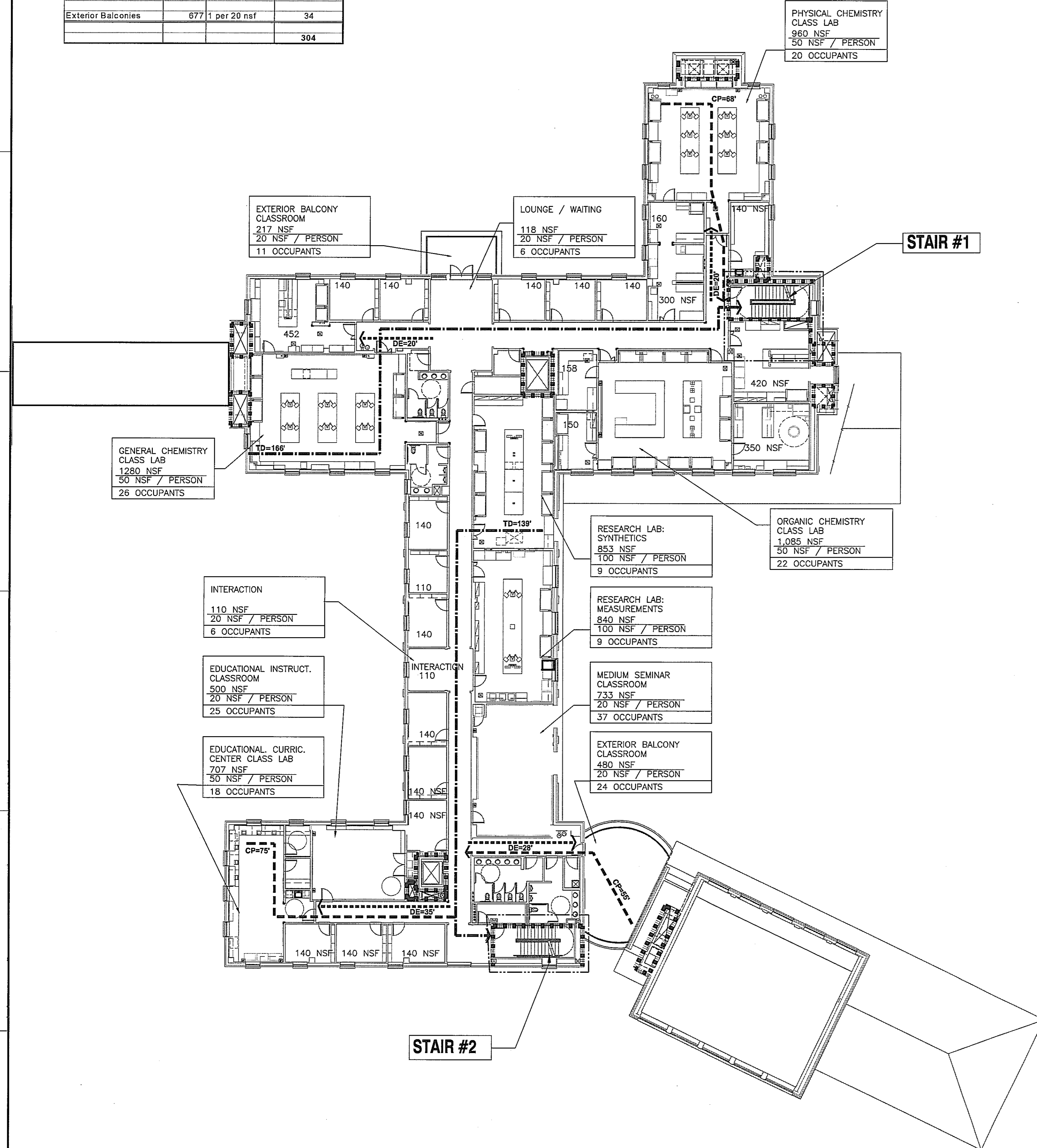
Egress Capacity Summary				
Second Floor				
	Door Clear Width (inches)	Stair Width (inches)	Required Capacity (persons)	Available Capacity (persons) (1), (2)
Stair 1	32	48	152	160
Stair 2	32	48	152	160
Totals			304	320

1) EGRESS CAPACITY BASED ON .3 INCHES PER OCCUPANT FOR STAIRWAYS.
 2) EGRESS CAPACITY BASED ON .2 INCHES PER OCCUPANT FOR OTHER EGRESS COMPONENTS.

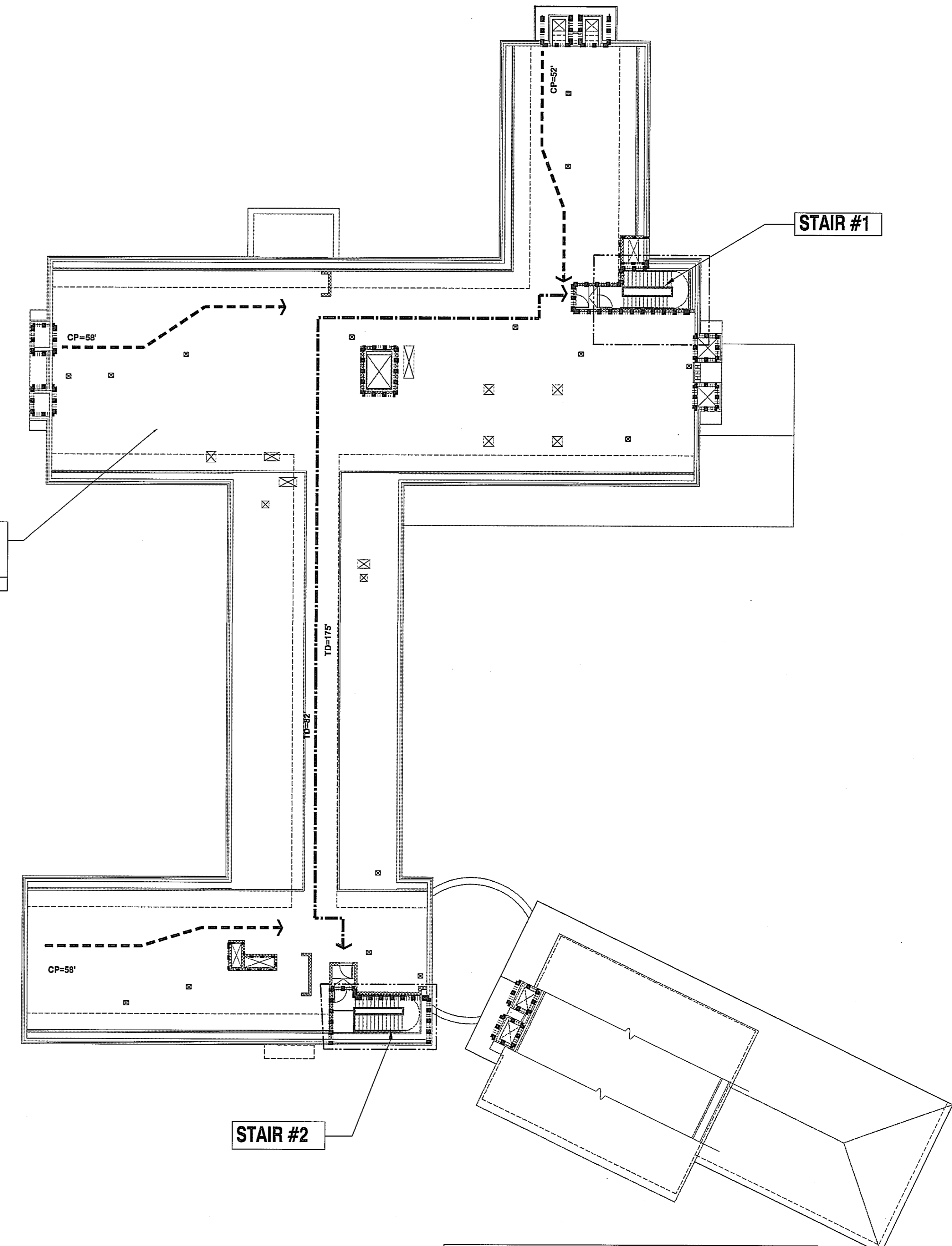
Max. Occupancy Attic			
Egress Component	Area	Occupancy Ratio	Total Occupants
Attic Area	10,367		
Mechanical /Electrical Spaces	10,367	1 per 300 nsf	35
			35

Egress Capacity Summary				
Attic				
	Door Clear Width (inches)	Stair Width (inches)	Required Capacity (persons)	Available Capacity (persons) (1), (2)
Stair 1	32	32	17	107
Stair 2	32	32	17	107
Totals			35	214

1) EGRESS CAPACITY BASED ON .3 INCHES PER OCCUPANT FOR STAIRWAYS.
 2) EGRESS CAPACITY BASED ON .2 INCHES PER OCCUPANT FOR OTHER EGRESS COMPONENTS.



1 SECOND FLOOR LIFE SAFETY / AREAS PLAN
 1/16" = 1'-0"
 GROSS AREA = 17,719 SQ.FT.
 NET AREA = 11,181 SQ.FT.



2 PENTHOUSE LIFE SAFETY / AREAS PLAN
 1/16" = 1'-0"

LIFE SAFETY PLAN LEGEND

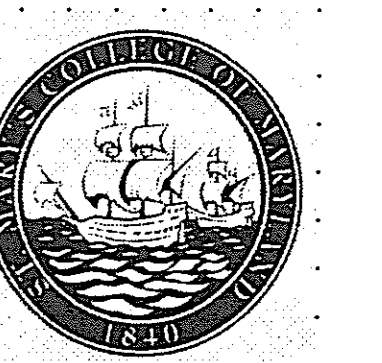
TD --- TRAVEL DISTANCE (MAX. DISTANCE = 300')
 CP --- COMMON PATH OF TRAVEL (MAX. DISTANCE = 100')
 DE --- DEAD END CORRIDOR (MAX. DISTANCE = 50')

1 HR RATED WALL
 2 HR RATED WALL

ROOM NAME
 000 ROOM AREA IN NET SQUARE FEET
 2 HR FIRE SPRAY BEAMS AND COLUMNS SUPPORTING STAIR (UL N708; BEAMS: UL X700 COLUMNS): SEE STRUCTURAL

St. Mary's College of Maryland
 St. Mary's City, MD

New Academic Building



SmithGroup

SmithGroup Incorporated
 1825 Eye Street NW
 Suite 250
 Washington, DC 20006
 T:202.942.2100
 E:202.974.4500
 www.smithgroup.com

USING AGENCY APPROVAL

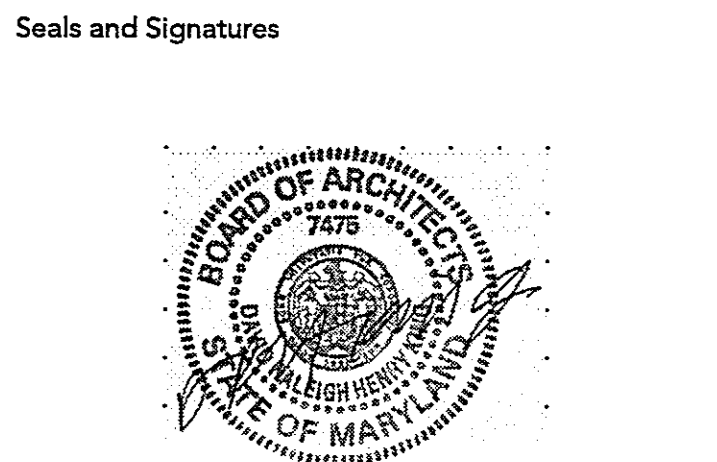
NAME _____ DATE _____
 TITLE _____

DEPT. OF GENERAL SERVICES APPROVAL

PROJECT MANAGER _____ DATE _____

CHIEF - PROJ. MGT. & DSGN. _____ DATE _____

Issued for	Rev	Date



01/05/05
 DATE

Graphic Scales

1" = 10' 1 1/2" = 20' 1" = 30'
 1" = 40' 1" = 50' 1" = 100'
 1 1/2" = 1'-0" 3" = 1'-0" 3/4" = 1'-0"
 5/8" = 1'-0" 3/8" = 1'-0" 1/4" = 1'-0" 1/8" = 1'-0" 1/16" = 1'-0"

Project North

Drawing Title
LIFE SAFETY PLAN SECOND FLOOR AND PENTHOUSE

AS SHOWN
 Scale
 J-494-020-002 25379.000
 DGS Project Number SG Project Number

G1.02

Drawing Number