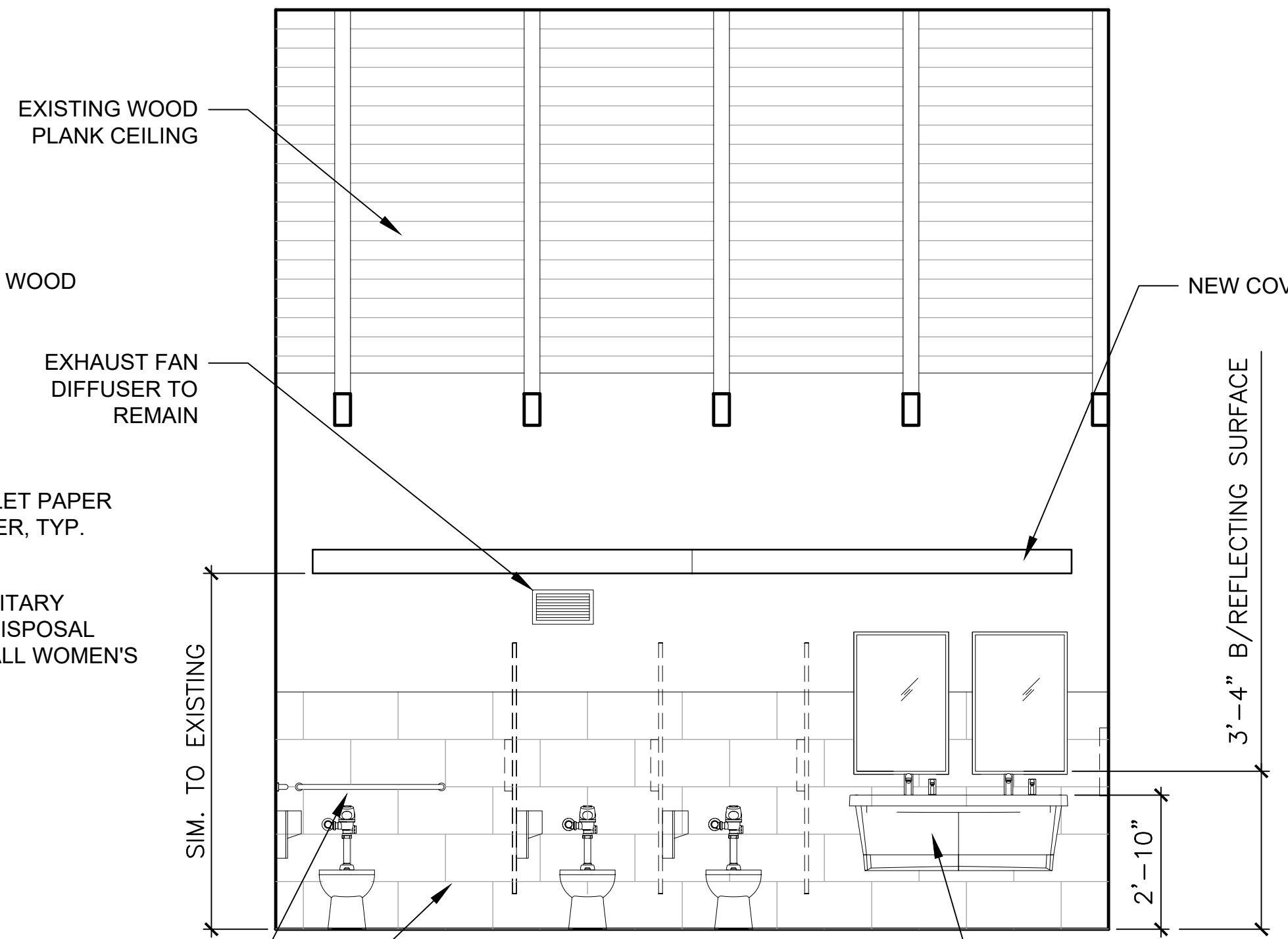
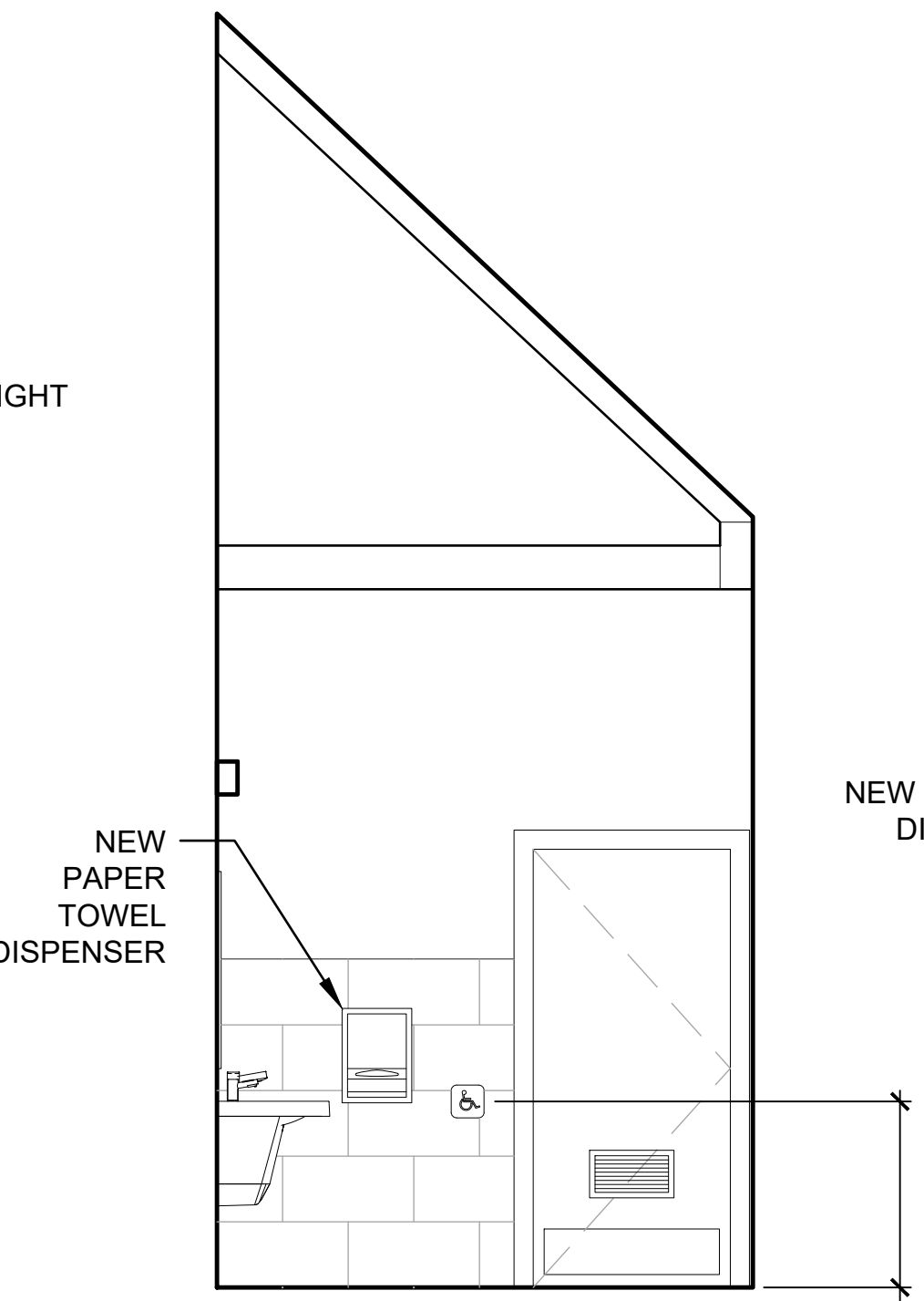


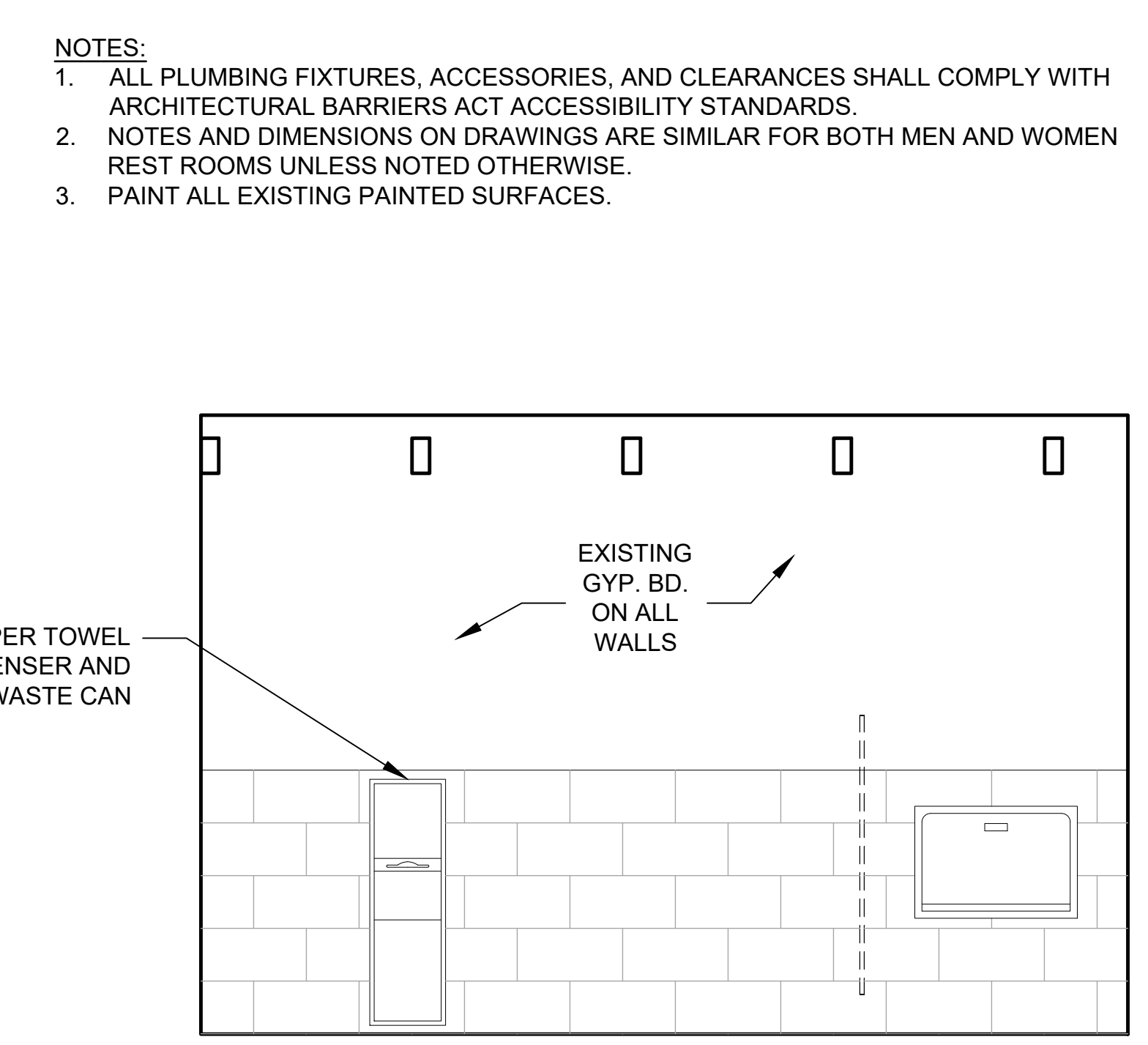
1 01 WOMENS - WEST
A1.1 3/8"=1'-0"



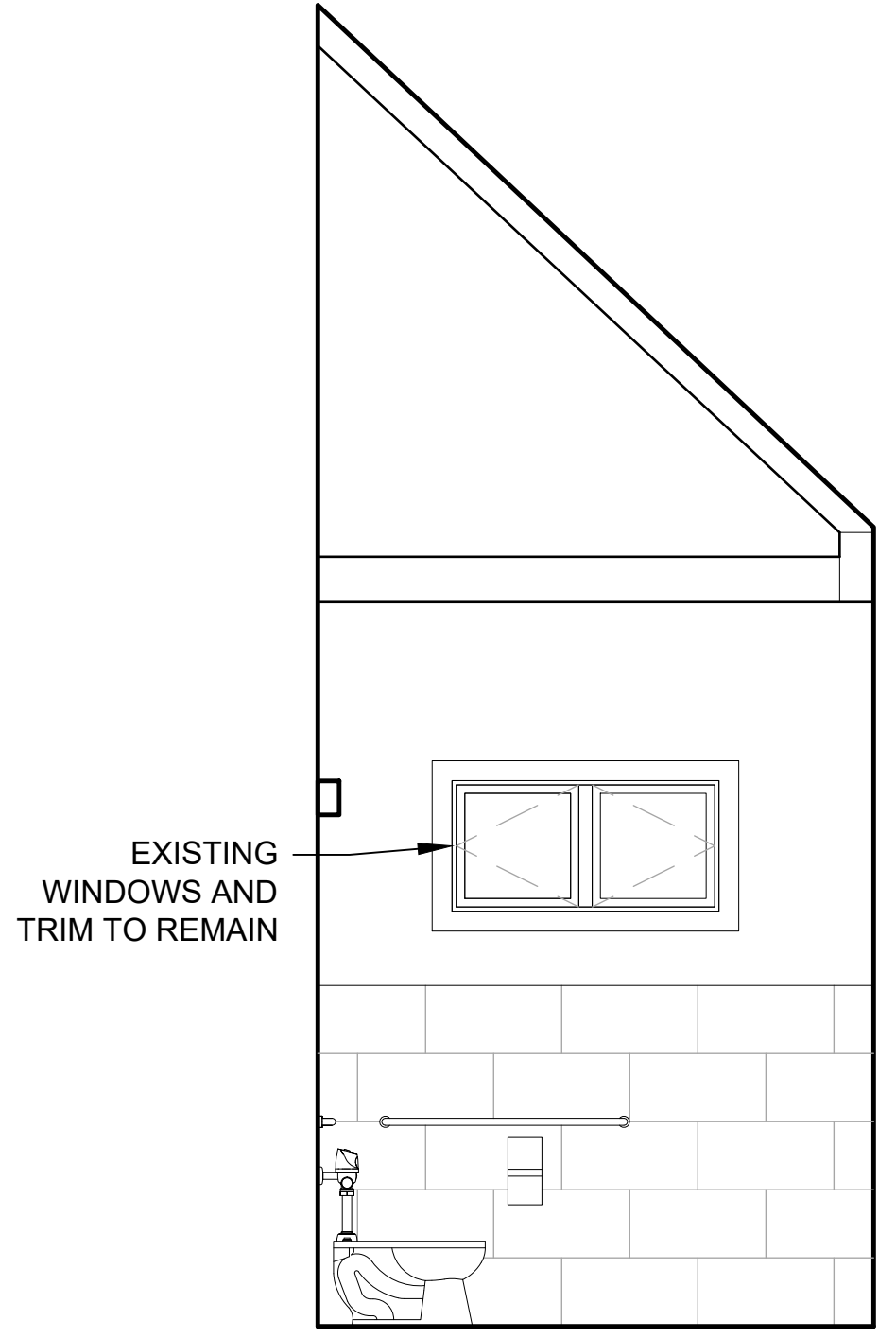
2 01 WOMENS - NORTH
A1.1 3/8"=1'-0"



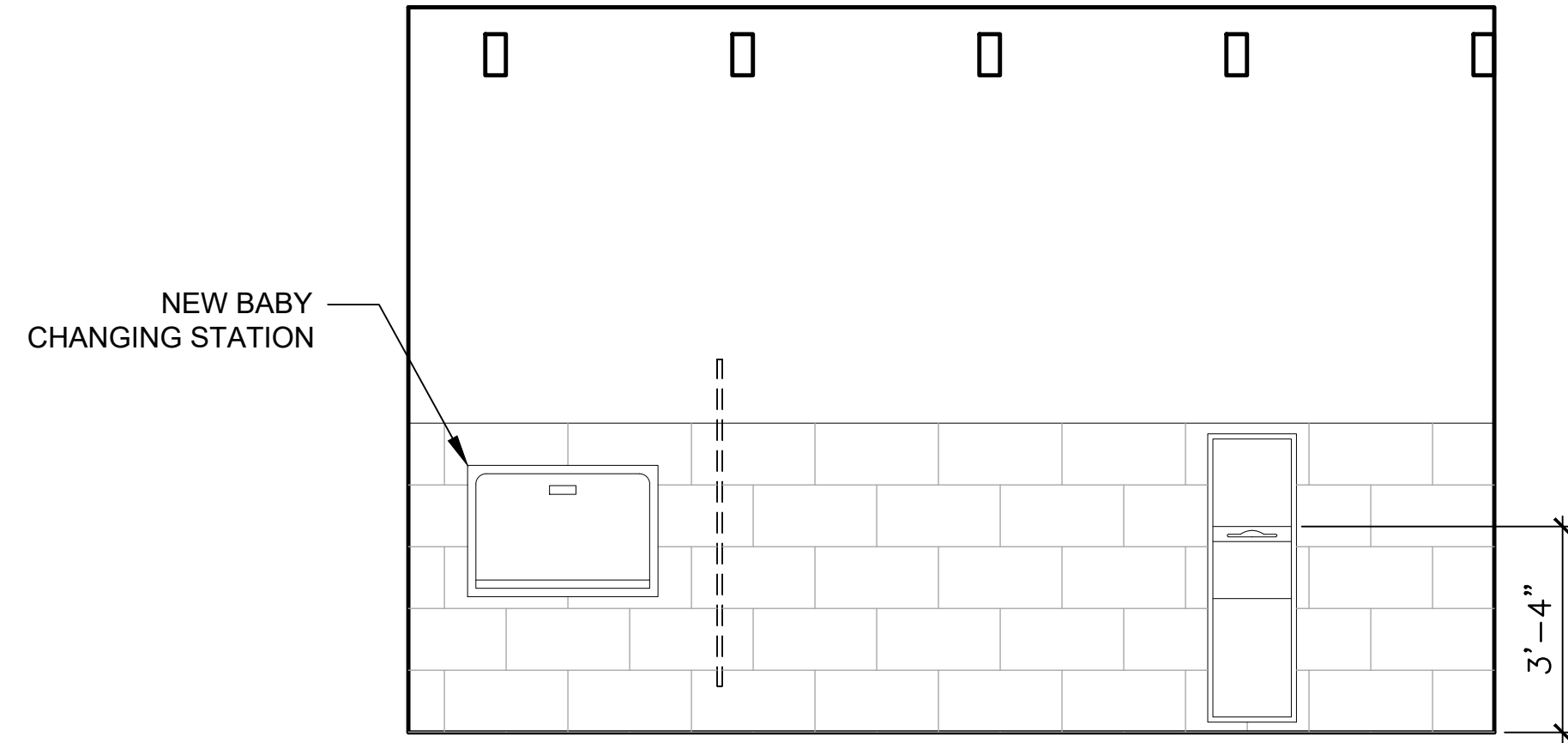
3 01 WOMENS - EAST
A1.1 3/8"=1'-0"



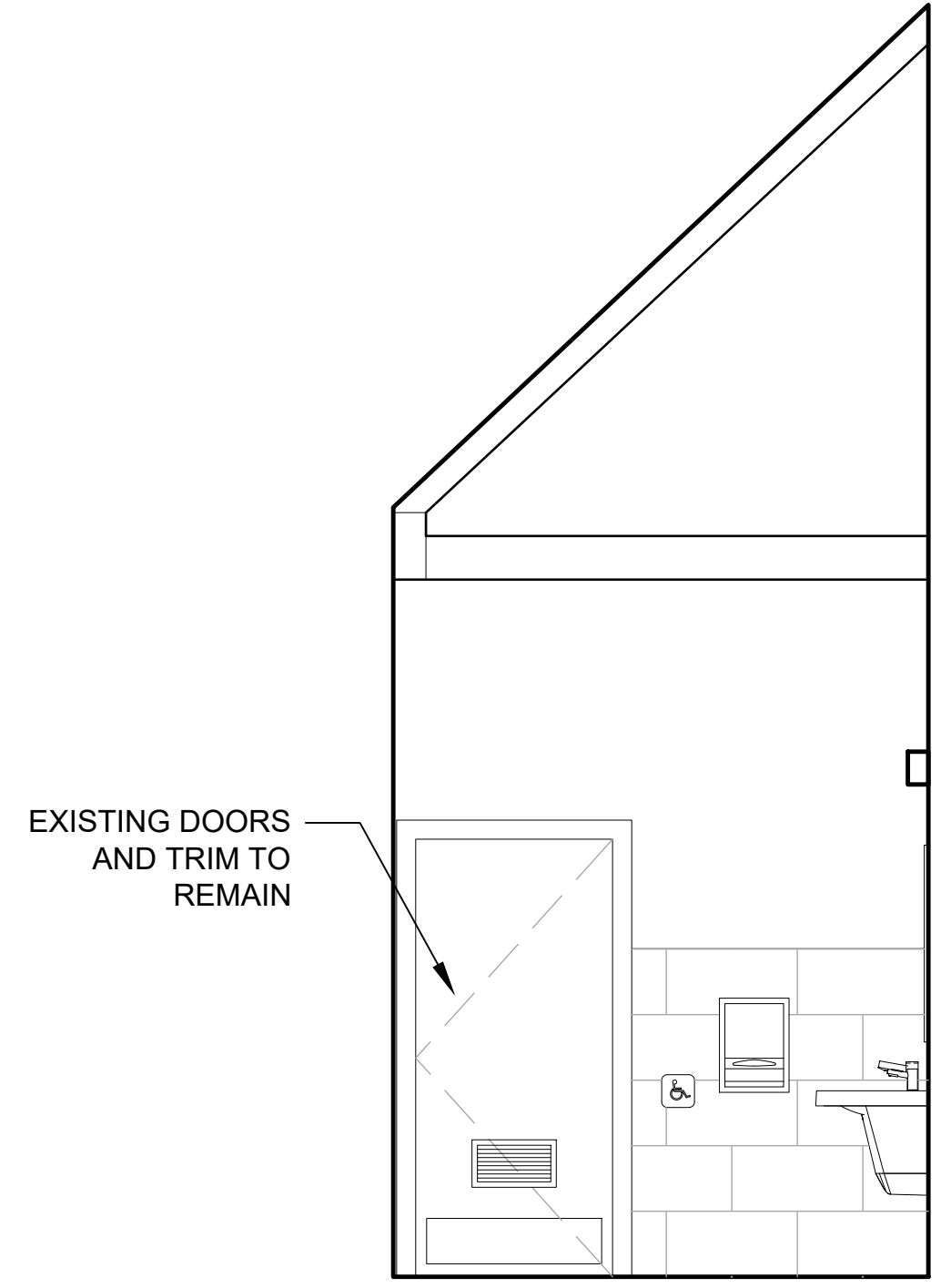
4 01 WOMENS - SOUTH
A1.1 3/8"=1'-0"



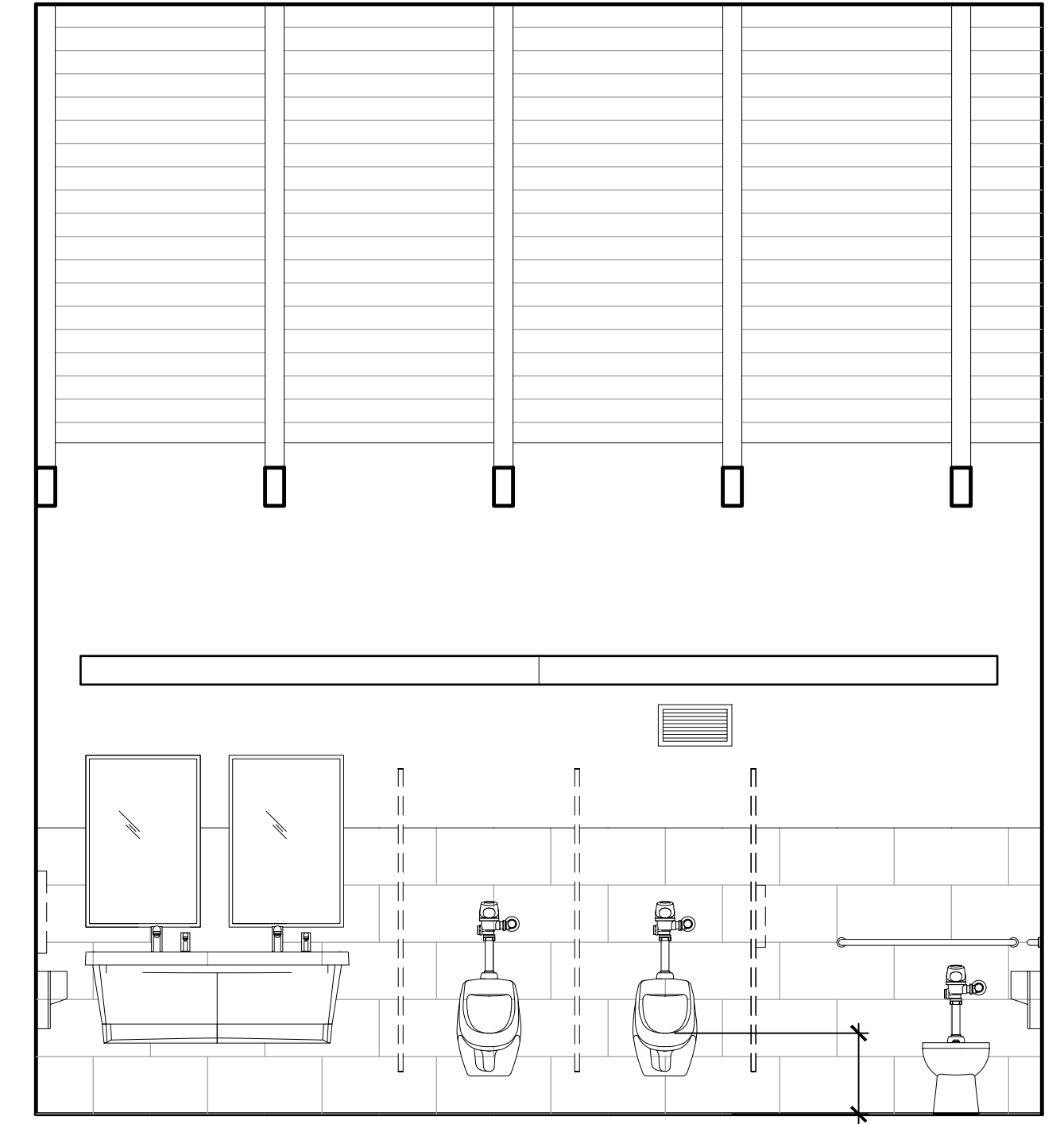
5 02 MENS - WEST
A1.1 3/8"=1'-0"



6 02 MENS - NORTH
A1.1 3/8"=1'-0"



7 02 MENS - EAST
A1.1 3/8"=1'-0"



8 02 MENS - SOUTH
A1.1 3/8"=1'-0"

- NOTES:
1. ALL PLUMBING FIXTURES, ACCESSORIES, AND CLEARANCES SHALL COMPLY WITH ARCHITECTURAL BARRIERS ACT ACCESSIBILITY STANDARDS.
 2. NOTES AND DIMENSIONS ON DRAWINGS ARE SIMILAR FOR BOTH MEN AND WOMEN REST ROOMS UNLESS NOTED OTHERWISE.
 3. PAINT ALL EXISTING PAINTED SURFACES.



SCALE: 3/8" = 1' - 0"

DESIGNED: GAD GH	SUB SHEET NO. A2	TITLE OF SHEET VISITOR CENTER REST ROOMS INTERIOR ELEVATIONS	DRAWING NO. XXX
TECH. REVIEW:		THOMAS STONE NATIONAL HISTORICAL SITE PORT TOBACCO, MD	XXXXXX
DATE: MAR2025			PMIS/PKG NO. 303931
			SHEET 3 OF 3

C:\Users\ghermon\OneDrive - DOW\Desktop\THST\CAD\THST_VC-restrooms_2025.dwg, 3/27/2025 8:56:36 AM